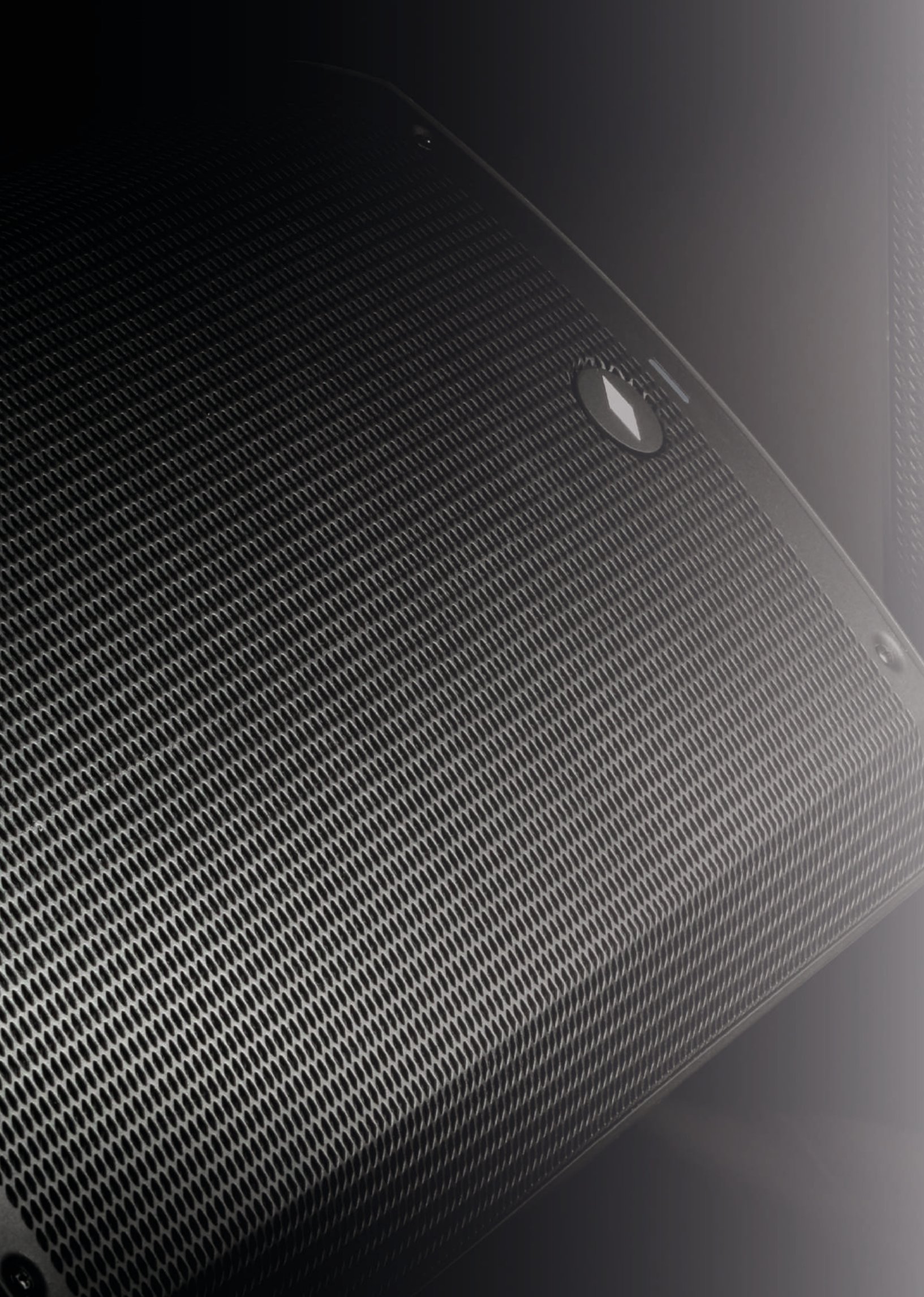




*Sound*Systems

PROEL 



General Index

Mixers

04 MQ series

Stage Gear

10 DB series

11 100 series

Processors

14 PC series

Power Amplifiers

16 DPX PFC series

18 HPX series

Loudspeakers

22 V PLUS series

26 V WAVE series

28 V FREE series

30 U24 series

32 Diva series

36 FLASH series

40 LITE series

46 S series

50 WX series

52 WD series

Portable Systems

54 SESSION 1

56 SESSION 4

58 SESSION 6

60 FREEPASS series

64 FREE series



MQ SERIES

MQ is a series of mixers created by PROEL to offer in a **very compact and stylish package** a **high input density**, a **full set of features** and a **superior audio quality**, at a very convenient price point. The MQ series includes **5 models** with 6, 10, 12 and 16 inputs, able to satisfy most of the sound reinforcement applications. Carefully designed and engineered in Italy by PROEL R&D, MQ mixers are hosted in ultra-rugged cases, providing **extended durability** for a stage-proof use.

The smallest models of the series, **MQ6** and **MQ6FX**, offer in an ultra-compact format the performance of professional consoles, delivering a **clean and accurate sound**. The MQ6FX, despite its small size, includes a **high-quality 24-bit DSP** able to provide musicians and performers with studio-grade effects.

MQ10FX, together with 3-band EQ and **one-knob intelligent COMPRESSORS**, offers also 100 DSP presets with a convenient LED display for the selection.

MQ12USB additional features include an **USB audio I/O interface** and extended mixing capability with MONITOR send, STEREO GROUP bus and 45mm control faders.

The top-of-the-line **MQ16USB** feature **16 inputs and 12 microphone channels** together with sweep mids and one-knob intelligent COMPRESSORS on mono channels, 4 AUX sends, STEREO GROUP bus and 60mm control faders.

Optional padded **carrying bags** and metal brackets for **19" rack mounting** are available for selected models.



MQ6

- Ultra-compact 6-input 2-bus mixer
- 4 MONO MIC/LINE inputs with 2-band EQ, LO-CUT filter and PHANTOM power
- 2 low-noise, very high-headroom microphone preamplifiers
- 2 STEREO LINE inputs
- HEADPHONES output
- Electronically balanced MAIN MIX outputs with XLR-M and 1/4" JACK connectors
- Two 4-LED VU-METERS
- Applications: home recording and rehearsal, ultra-small personal mixer for musicians



MQ6FX

- Ultra- compact 6-input 2-bus mixer with effect
- 4 MONO MIC/LINE inputs with 2-band EQ, LO-CUT filter and PHANTOM power
- 2 low-noise, very high-headroom microphone preamplifiers
- 2 STEREO LINE inputs
- 1 EFFECT send
- 24bit studio-grade digital effect with 16 presets
- HEADPHONES output
- Electronically balanced MAIN MIX outputs with XLR-M and 1/4" JACK connectors
- Two 4-LED VU-METERS
- Applications: home recording and rehearsal, ultra-small PA systems for schools, gyms and meeting rooms, personal mixer for musicians



High-headroom,
low-noise **MIC**
preamps



XLR balanced
MAIN MIX outputs



24bit studio-grade
digital effect with
100 presets

OPTIONAL ACCESSORIES

BAGMQ10FX



Padded bag



MQ10FX

- Compact 10-input 2-bus mixer with effect
- 2 MONO MIC/LINE inputs, 2 STEREO MIC/LINE inputs and 2 STEREO LINE inputs
- 4 low-noise, very high-headroom microphone preamplifiers
- PHANTOM power
- 'One-knob' COMPRESSOR with LED indicator on MONO channels
- 3-band EQ and LO-CUT filter
- 1 EFFECT send
- 24bit studio-grade digital effect with 100 presets, 2-digit display and footswitch MUTE
- HEADPHONES and CONTROL ROOM outputs
- Electronically balanced MAIN MIX outputs with XLR-M and 1/4" JACK connectors
- Two 8-LED VU-METERS
- Applications: small live bands (2 to 4 people), home and multimedia applications, rehearsal rooms, small fixed installations



One-knob intelligent
COMPRESSORS

MQ12USB

- Compact 12-input 4-bus mixer with effect and USB I/F
- 4 MONO MIC/LINE inputs, 2 STEREO MIC/LINE inputs and 2 STEREO LINE inputs
- 6 low-noise, very high-headroom microphone preamplifiers
- PHANTOM power
- 'One-knob' COMPRESSOR with LED indicator on MONO channels
- 3-band EQ with sweep mids and LO-CUT filter
- 1 AUX send pre-fader and 1 AUX send post-fader
- 24bit studio-grade digital effect with 100 presets, 2-digit display and footswitch MUTE
- Built-in USB interface for PC recording and playback
- GROUPS 1&2 with MIX routing and output
- HEADPHONES and CONTROL ROOM outputs
- Electronically balanced MAIN MIX outputs with XLR-M and 1/4" JACK connectors
- Two 8-LED VU-METERS
- Universal switching built-in power supply
- Applications: small live bands (3 to 5 people), home and multimedia applications, rehearsal rooms, small fixed installations

OPTIONAL ACCESSORIES

BAGMQ12FX



Padded bag

RACKMQ12USB



Adapter for rack



USB interface with routing options for PC recording and playback

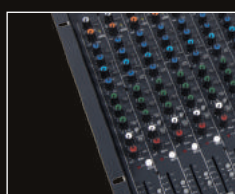
OPTIONAL ACCESSORIES

BAGMQ16FX



Padded bag

RACKMQ16USB



Adapter for rack

MQ16USB

- Compact 16-input 4-bus mixer with effect and USB I/F
- 8 MONO MIC/LINE inputs and 4 STEREO MIC/LINE inputs
- 12 low-noise, very high-headroom microphone preamplifiers
- PHANTOM power
- 'One-knob' COMPRESSOR with LED indicator on MONO channels
- 3-band EQ with sweep mids and LO-CUT filter
- 3 AUX sends pre-fader e 1 AUX send post-fader
- 24bit studio-grade digital effect with 100 presets, 2-digit display and footswitch MUTE
- Built-in USB interface with routing options for PC recording and playback
- GROUPS 1&2 with MIX routing and output
- 2-TRACK, HEADPHONES and CONTROL ROOM outputs
- Electronically balanced MAIN MIX outputs with XLR-M and 1/4" JACK connectors
- Two 12-LED VU-METERS
- Universal switching built-in power supply
- Applications: full live bands, home and multimedia applications, rehearsal rooms, fixed installations



		MQ6	MQ6FX	MQ10FX	MQ12USB	MQ16USB	Connectors
MONO INPUT CHANNEL							
Mic Input	sensitivity	from -10 to -50 dB	from -10 to -50 dB	from -10 to -50 dB	from -10 to -50 dB	from -10 to -50 dB	Balanced XLR-F
	impedance	2 Kohm	2 Kohm	2 Kohm	2 Kohm	2 Kohm	
Line Input	sensitivity	from +20 to -20 dB	from +20 to -40 dB	from +20 to -40 dB	from +20 to -20 dB	from +20 to -20 dB	Balanced JACK
	impedance	10 Kohm	10 Kohm	10 Kohm	10 Kohm	10 Kohm	
Lo cut		75Hz, 18dB/oct.	75Hz, 18dB/oct.	75Hz, 18dB/oct.	75Hz, 18dB/oct.	75Hz, 18dB/oct.	
EQ	HIGH (shelving)	±15 dB @ 12KHz	±15 dB @ 12 KHz	±15 dB @ 12 KHz	±15 dB @ 12KHz	±15 dB @ 12KHz	
	MID (peaking)			±15 dB @ 2.5 KHz	±15 dB @ 2.5KHz	±15 dB from 100 Hz to 8 kHz	
	LOW (shelving)	±15 dB @ 80Hz	±15 dB @ 80 Hz	±15 dB @ 80 Hz	±15 dB @ 80Hz	±15 dB @ 80Hz	
Compressor				CH 1-2, 1-knob	CH 1-4, 1-knob	CH 1-8, 1-knob	
STEREO INPUT CHANNEL							
Mic Input	sensitivity			from -10 to -50 dB	from -10 to -50 dB	from -10 to -50 dB	Balanced JACK
	impedance			2 Kohm	2 Kohm	2 Kohm	
Line Input	sensitivity	-10 dB	-10 dB	from +20 to -20 dB	from +20 to -20 dB	from +20 to -20 dB	Balanced JACK
	impedance	10 Kohm	10 Kohm	10 Kohm	10 Kohm	10 Kohm	
EQ	HIGH (shelving)			±15 dB @ 12KHz	±15 dB @ 12KHz	±15 dB @ 12KHz	
	MID (peaking)			±15 dB @ 2.5KHz	±15 dB @ 2.5KHz	±15 dB @ 2.5KHz	
	LOW (shelving)			±15 dB @ 80Hz	±15 dB @ 80Hz	±15 dB @ 80Hz	
MASTER SECTION							
MAIN MIX	nom. out level	+4 dBu	+4 dBu	+4 dBu	+4 dBu	+4 dBu	Balanced JACK and XLR-M
C. ROOM output	nom. out level			0 dBu	0 dBu	0 dBu	Unbalanced JACK
GROUP output	nom. out level				+4 dBu	+4 dBu	Unbalanced JACK
FX/AUX output	nom. out level			0 dBu	0 dBu	0 dBu	Unbalanced JACK
2TRK	nom. out level					0 dBu	Unbalanced RCA
	nom. in level					0 dBu	Unbalanced RCA
HEADPHONES	min. impedance	32 ohm	32 ohm	32 ohm	32 ohm	32 ohm	
	max. out level	(2x) 193 mW	(2x) 193 mW	(2x) 193 mW	(2x) 193 mW	(2x) 193 mW	Stereo JACK
USB					Stereo IN/OUT, 16-bit converter, 48 KHz sample rate		Type B
DIGITAL EFFECT PROCESSOR (not available for MQ6)							
Effects			16 presets	100 presets	100 presets	100 presets	
A/D and D/A converters			24 bit				
DSP resolution			24 bit				
Controls			ROTARY SELECTOR, PEAK LED, MUTE switch	2-DIGIT display, DIAL, PEAK LED, MUTE switch, MUTE footswitch			
GENERAL SPECIFICATIONS							
Maximum level	all outputs			+22 dBu			
Crosstalk	meas. at 1 KHz			>82 dBu			
HUM & Noise	unweighted			<-93 dBu			
THD + Noise	at +4dB, 1kHz			<0.008 %			
Dimensions (WxHxD)		162 x 210 x 51 mm	162 x 210 x 51 mm	275 x 279 x 81 mm	346 x 355 x 95 mm	481 x 432 x 104 mm	
Weight		1.00 kg	1.00 kg	2.50 kg	4.50 kg	6.50 kg	
POWER REQUIREMENTS							
Supply		18 VAC 1000 mA use only supplied AC/AC ADAPTER	18 VAC 1000 mA use only supplied AC/AC ADAPTER	18 VAC 1000 mA use only supplied AC/AC ADAPTER			
Mains Supply Voltage:		110-120 VAC (±10%) 50 / 60 Hz (US plug) 230-240 VAC (±10%) 50 / 60 Hz (EU plug) 240 VAC (±10%) 50 / 60 Hz (UK plug)	110-120 VAC (±10%) 50 / 60 Hz (US plug) 230-240 VAC (±10%) 50 / 60 Hz (EU plug) 240 VAC (±10%) 50 / 60 Hz (UK plug)	110-120 VAC (±10%) 50 / 60 Hz (US plug) 230-240 VAC (±10%) 50 / 60 Hz (EU plug) 240 VAC (±10%) 50 / 60 Hz (UK plug)	110-240 VAC (±10%) 50 / 60 Hz available with EU, US or UK mains cord	110-240 VAC (±10%) 50 / 60 Hz available with EU, US or UK mains cord	
Consumption		34 W	34 W	34 W	35 W	35 W	

DB SERIES



DB2A is a dual channel active **high-performance D.I. box** designed using carefully **selected electronic components** and able to provide a **clean, hum-free signal transmission** from the instrument to the mixing consoles, even on very long cables, without impedance matching problems. A **wide choice of connectors** (XLR, JACK and RCA) allows easy connection from a wide range of sources, including keyboards and samplers, guitars and basses, PC audio cards and any type of music player. The DB2A can be **powered** by 48 V phantom power from the mixing console, by a 9 V battery or by an external 9 V power adapter that can be daisy-chained using the double power connector on the rear panel. The **innovative mechanical design** includes an aluminum shell and rubber corners, which provide maximum protection in the toughest situations. When the two rubber corners are removed, two guides are exposed, allowing the coupling of two DI units, which can then be **mounted in a 19" standard rack** (rack ears included).



DB2A

- Dual channel active D.I. Box
- STEREO configuration: one unit can be used for a stereo device
- High dynamic headroom with minimum phase and harmonic distortion
- High input impedance reduces loading
- Very good electronic performance thanks to SMD components and low noise IC
- Very efficient ground lift circuitry
- Input JACK, RCA and XLR connectors with link possibility (all the connections on the same side)
- -20 dB, -30 dB PAD
- Powering options: 9V battery, +48V, external AC/DC adapter supply
- 19" rack mountable (ears included)
- Particularly suited for use with stereo keyboards, DJ equipment and PC-based audio systems

System Type	2-channel active DI BOX
INPUT SECTION	
Input Impedance	200K Ohm (pad at 0 dB) 47k Ohm (pad at -20 dB) 47k Ohm (pad at -30 dB)
Max Input Level	+5 dBu (pad at 0 dB) +25 dBu (pad at -20 dB) +35 dBu (pad at -30 dB)
Connectors	Two 1/4" jack connectors and one RCA connector (unbalanced) Jack: Tip Hot / Sleeve Ground
OUTPUT SECTION	
Output	Active discrete devices (transformer less)
Max. Output Level	into 600 Ohms or greater +5 dBu (for 0.1% THD at 50 Hz) +5 dBu (for 0.1% THD at 1k Hz)
Connector	XLR male: Pin 2 Hot / Pin 3 Cold / Pin1 Ground
System Performance	
Insertion loss	< 1 dB
CMR	> 50 dB
Phase distortion	+20° at 20 Hz, -30° at 20k Hz
Distortion THD 20÷20k Hz 0dBu	< 0.007 %
Noise	< -105 dBu unweighted
Frequency Response	10 Hz to 40 kHz, +0dB/-1 dB
Controls	On/off, Pad -20, Pad -30, Gnd Lift
Indicators	On
GENERAL	
Phantom Power	+24 volts DC to +48 volts DC
External AC/DC adapter	+9 volts DC
Standalone/Standby	9 volt PP3 type, battery preferably alkaline
Current consumption	less than 8 mA
Dimensions (W x H x D)	215 x 50 x 125 mm
Weight (excluding batteries)	1.06 kg (2.34 lb)



100 SERIES

The 100 Series is a range of D.I. Boxes and Headphone Amps designed to complement audio systems in **stage applications, recording studios** and **fixed installations**.

Hosted in a stylish extruded and stackable **aluminum shell** or in a sturdy metal chassis, the 100 Series products are meant to deliver sound quality, versatility and **stage-proof reliability** in a very affordable package.



DIRECT100A

- Active Direct Injection Box
- High quality isolation transformer for ultra-flat frequency response
- Low-noise OP amps with high-quality sound performance
- XLR-F and 1/4" JACK input connectors + 1/4" JACK link
- XLR-M balanced output
- 20dB PAD and GND lift switch



DIRECT100P

- Passive Direct Injection Box
- High quality isolation transformer for ultra-flat frequency response
- High quality electronic components
- 1/4" JACK input and link connectors
- XLR-M balanced output
- 20dB & 40dB PAD and GND lift switch



HPAMP104

- 4-CH Headphone Amplifier
- Very compact and portable package
- 1/4" JACK + RCA stereo/mono input
- 4 x 1/4" JACK stereo headphone outputs with individual level controls
- 2 x 45mW @ 100 ohm max output level
- 16 ohm minimum output impedance (per channel)
- Powered by DC adapter (included)



HPAMP106

- 6-ch Headphone Amplifier
- 6 independent high-power amplifier sections suitable for virtually any type of headphones
- 4 selectable main stereo/mono inputs with ¼" JACK connectors (REAR panel)
- 6 stereo headphone outputs with individual level controls , input selector and ¼" JACK connectors (FRONT panel)
- 2 x 193mW max output level at 32 ohm (per channel)
- 16 ohm minimum output impedance (per channel)
- Built-in power supply with shielded transformer and voltage selector.
- 19"rack mountable metal chassis

	DIRECT100A	DIRECT100P	HPAMP104	HPAMP106
System Type	1 channel active DI	1 channel passive DI	4-channel headphone amplifier	6-channel headphone amplifier
INPUT SECTION				
Inputs	1	1	1 stereo	4 stereo
Input Impedance	>250 Kohm	>250 Kohm	500 Kohm	47 Kohm
Max Input Level	+6 (PAD at 0) / +26 (PAD at 20) dBu	+10 (PAD at 0) / +30 (PAD at 20) / +50 (PAD at 40) dBu	+15 dBu	+25 dBu
Connectors	1 x XLR-F + 1 x 1/4" jack unbalanced	1 x 1/4" jack unbalanced	1/4" jack stereo, 2 x RCA	2 x 1/4" jack unbalanced (each input)
Link	1 x 1/4" jack unbalanced	1 x 1/4" jack unbalanced	-	-
OUTPUT SECTION				
Outputs	Transformer Balanced (fully isolated)	Transformer Balanced (isolated with shielding)	4 stereo	6 stereo
Insertion Loss	0 dB	26 dB	-	-
Maximum Output	-	-	(2x) 45mW @ 100 ohm (each)	(2x) 193 mW @ 32 ohm (each)
Maximum Gain	-	-	+20 dB each channel	+13 dB each channel
Load Impedance	600 Ohms or greater	600 Ohms or greater	minimum 16 ohm per channel	minimum 16 ohm per channel
Connectors	XLR male	XLR male	1/4" stereo (each output)	1/4" jack stereo (each output)
SYSTEM PERFORMANCE				
Distortion (THD)	< 0.005 %	< 0.007 %	0.02 %	0.02 %
Noise	< -105 dBu unweighted	-	< -98 dBu unweighted	< -98 dBu unweighted
Frequency Response	10 Hz to 40 kHz (-3 dB)	40 Hz to 20 kHz (-3 dB)	20 Hz - 20 KHz (-3 dB)	20 Hz - 20 KHz (-3 dB)
GENERAL				
Controls	ON/OFF, PAD -20, GND LIFT	PAD 0 / -20 / -40, GND LIFT	OUTPUT LEVEL, INPUT STEREO/ MONO	OUTPUT LEVEL, INPUT SELECTOR
Indicators	Power ON	-	Power ON	Power ON
Phantom Power	+18 volts DC to +48 volts DC	-	-	-
Power Supply	9 volt PP3 battery type alkaline	-	12-18 VDC (adapter included)	Selectable 100-120 VAC, 220-240 VAC, 50-60 Hz
Dimensions (WxHxD)	152 x 50 x 134 mm	134 x 50 x 105 mm	152 x 50 x 72 mm	480 x 44 x 210 mm
Weight	0,70 Kg	0,55 Kg	0,8 Kg	3,9 Kg

PC SERIES

The PC260 digital loudspeaker controller is based on the **PROEL CORE DSP platform** and feature state-of-the-art signal processing, advanced functions a very intuitive UI, with a direct access to all the editing functions, and remote control capability. The **40bit floating point resolution** and the 24bit AD/DA converters ensure a perfect signal integrity with a dynamic range in excess of 110dB, for a superior sonic performance.

The PC260 includes a full set of functions and has 2 inputs (with the choice of **AES digital input**) and 6 outputs. Each INPUT features 5 bands of full PARAMETRIC EQ (including parametric, shelving, notch, res. HP and LP, allpass and bandpass), 28 bands of GRAPHIC EQ and 3 bands of an extremely versatile and powerful **DYNAMIC EQ**, together with a fully programmable COMPRESSOR/LIMITER and up to 600ms of delay. The OUTPUTS include any kind of crossover filters with slope up to 48dB per octave, together with 5 bands of PEQ, fully programmable COMPRESSOR/ LIMITER and up to 600ms of delay. Additional features include a 1/3 oct. **RTA** with dedicated MIC input with phantom power and a GROUPING function.

The **SPL Manager**, specifically designed for the application in fixed installations, is a very powerful tool that allows to schedule, in 4 different scenes, 16 events on each input and output, including MUTE, level change, COMPRESSOR threshold change and PRESET change. These events can be then performed automatically according to the internal clock of the unit.

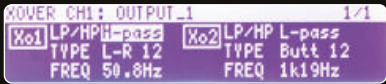
PC260 can be remotely controlled with **PRONET software** through the USB port on the front panel and it can be included in a PRONET **network** using the two RJ-45 connectors on the rear panel (with the optional USB2CAN-D converter).



PC260

- 40bit floating point resolution CORE DSP
- 24bit AD/DA converters
- 110dB dynamic range
- 5 bands of full PARAMETRIC EQ on each INPUT and OUTPUT
- 28 bands of GRAPHIC EQ on each INPUT
- 3 bands of DYNAMIC EQ on each INPUT
- Fully programmable COMPRESSOR/LIMITER on each INPUT and OUTPUT
- Up to 600ms delay time on each INPUT and OUTPUT
- Full METERING on each INPUT and OUTPUT
- RTA with dedicated MIC input
- GROUPING function
- SPL manager
- AES digital input
- PRONET remote control thru USB and network capability

PC260	
INPUT SECTION	
Inputs	2 electronically balanced - XLR F (IN) + XLR M (LINK)
Input Impedance	> 10k ohms
Maximum Input Level	+20dBu (-6dB pad)
Input gain	+6 dB to -30 dB in 0.2 dB steps
Digital Input	AES/EBU
OUTPUT SECTION	
Outputs	6 - XLR M
Maximum Output Level	+20dBu
Output Gain	+15 dB to -30 dB in 0.2 dB steps and mute
CROSSOVER FILTERS	
Slopes	6/12/18/24/48dB per octave
Type	Bessel / Butterworth / Linkwitz-Riley
DELAYS	
Max Delay time	600 ms on all In and Out
Delay Step	21 µs
PARAMETRIC EQ FILTERS	
Maximum number of filters	5 Per input / 5 per output
EQ Type	Parametric, Notch, Shelf, Bandpass, resonant HP/LP, Allpass
EQ Gain	+15 dB to -15 dB in 0.2 dB steps
Q (bandwidth)	0.4 to 28.85 (3 to 0.05, 1/20 oct. steps)
EQ freq	15.6 Hz – 22.62 kHz (1/20 oct. steps)
Shelving gains	±15 dB in 0.2 dB steps
DYNAMIC EQ FILTERS	
Maximum number of filters	3 per input
EQ Type	Parametric, Shelf 6
EQ Gain	+15 dB to -15 dB in 0.2 dB steps
Q (bandwidth)	0.4 to 28.85 (3 to 0.05, 1/20 oct. steps)
EQ freq	15.6 Hz – 22.62 kHz (1/20 oct. steps)
Shelving gains	±15 dB in 0.2 dB steps
GRAPHIC EQ	
Maximum number of EQ.	1 per input
EQ Type	28 band 1/3 oct.
EQ freq	31.5Hz - 16kHz 1/3 oct.
EQ Gain	+15 dB to -15 dB in 0.2 dB steps
EXTRA FEATURES	
RTA range	20Hz-20kHz 1/3oct.
RTA mic input	15V phantom power
SPLM	4 scene /16 events for each scene
PROCESS \ CONVERSION	
AD/DA conversion	24 bit
AD/DA latency	1.68 ms (analogue in – analogue out @ 48 kHz)
Sampling frequency	48 KHz
Internal processing	40 bit floating point
GENERAL PERFORMANCE (FILTERS OUT)	
Frequency response	+½ dB 20 Hz~20 kHz
Dynamic range	>110 dB 20 Hz~20 kHz unwt'd
Distortion (THD)	< 0.015% @ 1kHz, +18dBu
Display	192x32 LCD Graphic Display
Metering	Input: 2 x 4 LED - Output: 6 x 4 LED
Remote control	USB, RJ45 PRONET In/Out
GENERAL	
Dimensions	44 x 482 x 295 mm
Weight	4.1 kg (9 lb)
AC Power	80 to 250V ±15% @ 50/60 Hz



USB2CAN-D



Dual-output USB to CAN converter



DPX PFC SERIES

DPX PFC is a series of **ultra-lightweight** power amplifiers able to provide, for professional mobile and fixed PA systems, a huge amount of power and the **maximum performance and portability in a very affordable package**.

Thanks to the **high-density Class D technology** employed in the output stages, we've been able to build very powerful amplifiers in an ultra-compact and lightweight package. The extremely efficient **Switch Mode Power Supply (SMPS) with Power Factor Correction technology (PFC)** helps to reduce further the weight and provides universal mains operation, delivering constant energy to the loudspeakers regardless of the AC line voltage fluctuations and eliminating the need for market specific power supplies and related reliability issues.

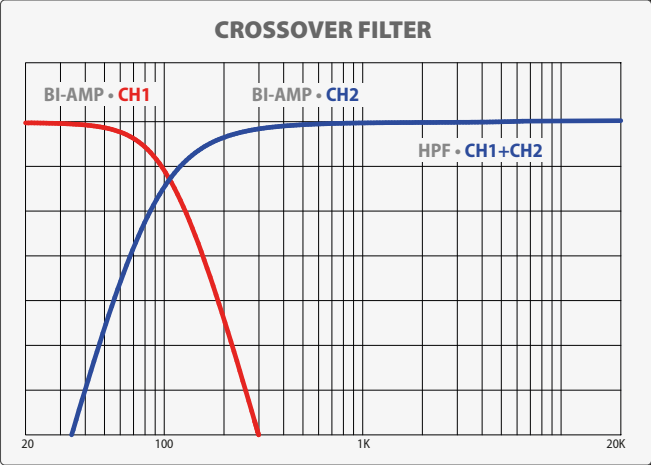
All models feature a **built-in 24dB/octave stereo crossover** with BI-AMP and HIGH-PASS options, for easily filtering a 2-way system without the need of additional outboard. Fast-attack precise CLIP LIMITERS guarantee maximum output without distortion, while a comprehensive protection system safeguards both the speakers and the amplifier.

The electronics is hosted in a **feather-light all-aluminum case**, able to provide an efficient cooling and, at the same time, protection and durability over the years.

DPX PFC are power amplifiers offering extraordinary value to professional entertainers, DJ and sound engineers looking for **massive output, excellent performance** and **absolute portability**.



- High-density Class D technology
- Very efficient Switch Mode Power Supply (SMPS) with PFC
- Built-in 24dB/octave stereo crossover
- Extensive protection system for maximum reliability
- Integrated fast-attack CLIP LIMITERS
- Precise 8-segment LED ladders
- FRONT-TO-BACK cooling system with variable speed fan
- Ultra-lightweight all-aluminum chassis
- TOTAL WEIGHT less than 5kg



	DPX1200PFC	DPX1700PFC	DPX2500PFC
Power 8 ohm*	350	500	650
Power 4 ohm**	600	850	1250
Power BRIDGE 8 ohm**	1200	1700	2500
* W RMS per channel, both channel driven, 1KHz THD 1%, ** 40ms burst			
Output Stage	Class D		
Frequency Response	20 Hz - 20 kHz		
Input Sensitivity	+2.2 dBu (1.0 Vrms)		
Input Impedance	20 kΩ balanced / 10 kΩ unbalanced		
Damping Factor	> 500 @ 8 ohm		
S/N Ratio (Unweighted)	> 100 dB		
THD+N	< 0.15 %		
Input Connectors	XLR F (INPUT), XLR F (LINK)		
Output Connectors	NL4 SPEAKON		
Controls	INPUT LEVEL, STEREO/BRIDGE-PARALLEL, FLAT/BI-AMP/HPF		
HPF/BI-AMP filter	LR 24dB / Oct. @ 100 Hz		
LED Indicators	7-LED BAR (ON, LIMIT, PROTECTION, -5dB / -10dB / -20dB / -40dB SIGNAL)		
Cooling	Variable speed DC fan, air flow from front to rear		
Protections	AC low power, DC, thermal, short circuit, VHF, CLIP limiter		
Power Supply	100-240 VAC 50/60 Hz (±10%)		
Dimensions (W x H x D)	483 x 89 x 255 mm		
Weight	3.8 Kg (8.4 lb)	3.8 Kg (8.4 lb)	4.2 Kg (9.3 lb)

DPX1200PFC
DPX1700PFC
DPX2500PFC

HPX SERIES

HPX is a series of power amplifiers designed to provide entertainers and audio professionals with **quality performance** and **maximum portability** at a very affordable price.

Combining rock-solid CLASS AB, CLASS H and CLASS I power stages to extremely efficient **SWITCH MODE power supplies**, the HPX amplifiers delivers from 900W to 8000W of pure power to your speaker system in **2-ohm operation**, providing clear and defined highs together with extremely punchy lows.

Thanks to the **SMPS** light-weight technology and to the efficient cooling systems, the HPX come in a very compact and portable package, yet sturdy enough to provide the maximum protection and durability over the years.

In the models from 900 to 2800, a **built-in selectable LPN** (Low-Pass Notch) filter enhances the amplifier response at the low frequencies, providing an increased punch while protecting the speakers from over-excursion and increasing the headroom.

HPX4600 and HPX6000 feature a 3-tier CLASS H power stage, while the biggest model of the series, HPX8000, makes use of the advanced **CLASS I technology**, achieving a much greater efficiency and sonic quality than any other standard amplifier classes and offering an **extremely high power density**. With an overall efficiency higher than 75% these three models represent a cost-effective solution also for large sound reinforcement systems requiring very high power levels combined to top quality performance.





- Integrated CLIP LIMITERS (user-defeatable in 4600 and 6000)
- Selectable LPN filter (Low-Pass Notch - 900 to 2800)
- STEREO/PARALLEL/BRIDGE mode
- 2- or 3-position GAIN selector
- XLR, 1/4" JACK and RCA input connectors (900 to 2800)
- SPEAKON and binding post output connectors
- AC, DC, thermal and short-circuit protection
- FRONT-TO-BACK ventilation system with variable speed fan and removable dust filters
- Compact chassis with die-cast handles

	HPX900	HPX2400	HPX2800	HPX4600	HPX6000	HPX8000
Power 8 ohm*	200	450	600	850	1200	1800
Power 4 ohm*	300	800	1000	1400	2000	3200
Power 2 ohm **	450	1200	1400	2300	3000	3900
Power BRIDGE 8 ohm*	600	1600	2000	2800	4000	6000
Power BRIDGE 4 ohm**	900	2400	2800	4600	6000	7200
* W RMS per channel, both channel driven, 1KHz THD 1%, ** 40ms burst						
Output Stage	Class AB			Class H		Class I
Frequency Response	20 Hz - 20 kHz					
Input Impedance	10 kΩ unbalanced - 20 kΩ balanced					
Damping Factor	>100			>200		
Slew Rate	>20v/us					
S/N Ratio (Unweighted)	>85 dB		>90 dB		>80 dB	
Input Connectors	XLR M, 1/4" JACK, RCA			NEUTRIK Combo and XLR M		
Output Connectors	SPEAKON and Binding Post					
Controls	Detented INPUT LEVEL control, GAIN selector, STEREO/BRIDGE/PAR MODE selector LOW-PASS NOTCH (LPN - 900 to 2800), GND lift, SOFT CLIPPING (4600, 6000)					
LED Indicators	STANDBY, ON, PARALLEL, BRIDGE, SIGNAL, LIMIT, PROTECT - 8000: TEMP, -5/-10/-20					
Cooling	Variable speed DC fan					
Protections	AC low power, DC, thermal, short circuit, VHF, CLIP limiter					
Power Supply	230 VAC 50 Hz or 120 VAC 60 Hz					
Dimensions (W x H x D)	483 x 89 x 335	483 x 89 x 395		483 x 89 x 505		483 x 89 x 451
Weight	6.0 kg (13.2 lb)	9.2 kg (20.3 lb)	9.2 kg (20.3 lb)	13.0 kg (28.7 lb)	13.6 kg (29.9 lb)	15.5 kg (34.2 lb)

HPX900



HPX2400



HPX2800



HPX4600



HPX6000



HPX8000









V PLUS series is the evolution of the acclaimed V series of PROEL powered loudspeakers delivering **absolute value** in terms of **performance, engineering** and design at a more affordable cost.

These **ultra-portable** speakers combine, in carefully engineered and light-weight cabinets, the clearest and most accurate **PROEL sound** with **Class D amplifier technology** and **Switch Mode Power Supply**, offering an unbeatable PA solution at its price point.

All the models feature an extremely efficient amplifier module capable of delivering **600 W or 400W** of robust power to the transducers. Thanks to the use of SMPS technology, this power comes in an **ultra-lightweight package**, making the V PLUS the **most portable PROEL speakers ever**. The



V PLUS SERIES

power module is hosted in a fully sealed aluminium box, which provides protection, perfect insulation of the cabinet from the outside and extremely efficient cooling.

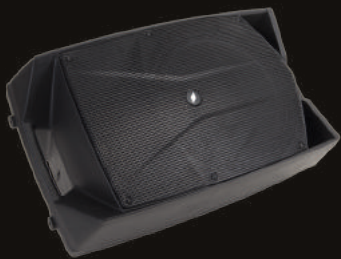
Thanks to the carefully selected speakers and to the **sophisticated active electronics**, including dual CLIP LIMITERS for an undistorted sound even at the loudest level, the sound of the V PLUS has been precisely tuned in every details, in order to provide **unheard performance in this price range**.

The V PLUS cabinets, expression of the most advanced **Italian design**, include a highly protective steel grille and a super-comfortable luggage-style top handle for an effortless portability. The slanted shape allows the speakers to be laid on their side and used also as stage monitors.

V PLUS SERIES



Ultra-lightweight, high-efficiency Class D power amplifiers with SMPS



Symmetrical 45° wedge angle for stage monitoring



Selectable MIC/LINE input with 2-band EQ

V8PLUS

- Bi-amplified 2-way system
- 1" high-definition neodymium compression driver on a wide-dispersion 90° x 60° constant coverage horn
- 8" long-excursion woofer with 1.5" voice coil
- 400 W total peak power amplifier
- SPL MAX 121 dB
- Frequency response 70 Hz - 20 kHz
- 7 kg TOTAL WEIGHT



V10PLUS

- Bi-amplified 2-way system
- 1" high-definition neodymium compression driver on a wide-dispersion 90° x 60° constant coverage horn
- 10" long-excursion woofer with 2" voice coil
- 600 W total peak power amplifier
- SPL MAX 123 dB
- Frequency response 60 Hz - 20 kHz
- 10 kg TOTAL WEIGHT



	V8PLUS	V10PLUS
System type	2-way vented enclosure	2-way vented enclosure
High Frequency Device	1" neodymium compression driver	1" neodymium compression driver
Low Frequency Device	8" woofer with 1.5" voice coil	10" woofer with 2" voice coil
Angular Coverage	90° H x 60° V	90° H x 60° V
Total peak power	400 W	600 W
HF Amplifier Continuous Power	50 W Class D	50 W Class AB
LF Amplifier Continuous Power	150 W Class D	250 W Class D
Power Supply	SMPS	SMPS
Processing	Analog	Analog
Frequency Response	70 Hz - 20 kHz	60 Hz - 20 kHz
Max SPL	121	123
Connectors	IN: COMBO, LINK: XLR M	IN: COMBO, LINK: XLR M
Controls	LEVEL, LINE/MIC selector, LOW EQ, HIGH EQ, GND LIFT, FRONT LED selector	LEVEL, LINE/MIC selector, LOW EQ, HIGH EQ, GND LIFT, FRONT LED selector
Stage Monitor Angle	45°	45°
Flying System	4 x M8 - top/bottom	4 x M10 - top/bottom
Cabinet Material	Polypropylene	Polypropylene
Cabinet Colour	Black	Black
Handles	1 x top	1 x top
Pole Socket	1 x bottom	1 x bottom
Power Supply	230 VAC or 120 VAC 50/60 Hz with LINE VOLTAGE selector	230 VAC or 120 VAC 50/60 Hz with LINE VOLTAGE selector
Dimensions (W x H x D)	280 x 422 x 252 mm	330 x 512 x 280 mm
Weight	7 kg	10 kg

V12PLUS

- Bi-amplified 2-way system
- 1" high-definition neodymium compression driver on a wide-dispersion 90° x 60° constant coverage horn
- 12" long-excursion woofer with 2.5" voice coil
- 600 W total peak power amplifier
- SPL MAX 124 dB
- Frequency response 60 Hz - 20 kHz
- 13 kg TOTAL WEIGHT



V15PLUS

- Bi-amplified 2-way system
- 1" high-definition neodymium compression driver on a wide-dispersion 90° x 60° constant coverage horn
- 15" long-excursion woofer with 2.5" voice coil
- 600 W total peak power amplifier
- SPL MAX 126 dB
- Frequency response 50 Hz - 20 kHz
- 18 kg TOTAL WEIGHT



Ergonomic, ultra-comfortable top handle for an effortless transportation

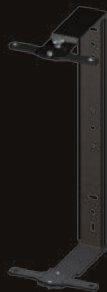
OPTIONAL ACCESSORIES

COVERV8 COVERV10 COVERV12 COVERV15



Cover for V8PLUS -V10PLUS
V12PLUS - V15PLUS

KPTV8 KPTV10 KPTV12 KPTV15



Brackets for V8PLUS -V10PLUS
-V12PLUS - V15PLUS

	V12PLUS	V15PLUS
System type	2-way vented enclosure	2-way vented enclosure
High Frequency Device	1" neodymium compression driver	1" neodymium compression driver
Low Frequency Device	12" woofer with 2.5" voice coil	15" woofer with 2.5" VC
Angular Coverage	90° H x 60° V	90° H x 60° V
Total peak power	600 W	600 W
HF Amplifier Continuous Power	50 W Class AB	50 W Class AB
LF Amplifier Continuous Power	250 W Class D	250 W Class D
Power Supply	SMPS	SMPS
Processing	Analog	Analog
Frequency Response	50 Hz - 20 kHz	45 Hz - 20 kHz
Max SPL	124	126
Connectors	IN: COMBO, LINK: XLR M	IN: COMBO, LINK: XLR M
Controls	LEVEL, LINE/MIC selector, LOW EQ, HIGH EQ, GND LIFT, FRONT LED selector	LEVEL, LINE/MIC selector, LOW EQ, HIGH EQ, GND LIFT, FRONT LED selector
Stage Monitor Angle	44°	44°
Flying System	4 x M10 - top/bottom	4 x M10 - top/bottom
Cabinet Material	Polypropylene	Polypropylene
Cabinet Colour	Black	Black
Handles	1 x top	1 x top, 2 x sides
Pole Socket	1 x bottom	1 x bottom
Power Supply	230 VAC or 120 VAC 50/60 Hz with LINE VOLTAGE selector	230 VAC or 120 VAC 50/60 Hz with LINE VOLTAGE selector
Dimensions (W x H x D)	380 x 600 x 328 mm	440 x 712 x 400 mm
Weight	13 kg	18 kg



V WAVE SERIES

With **V WAVE** PROEL has further expanded the potential of the acclaimed V SERIES by adding to the lightweight ultra-durable PP cabinets, to the **clear and accurate sound** and to the **powerful 600W amplifier** an **ultra-versatile 3-ch mixer section**.

V10WAVE and **V12WAVE** are active portable sound systems featuring multiple inputs and an advanced **MP3 player with BLUETOOTH connectivity**, able to play songs from an SD card, a USB MEMORY STICK and also from your smartphone or tablet thru a **BLUETOOTH connection**. V WAVE include also the **BT LINK** function that allows to connect your BLUETOOTH device to two speakers in STEREO mode, completely eliminating the need for cables.

The built-in 3-channel mixer, with independent level controls and a 2-band EQ, includes also **two USB inputs** for connecting PROEL **U24H** or **U24B 2.4GHz Wireless Microphones with USB receiver**. These hassle-free wireless systems, available both with handheld and bodypack transmitter, can be connected to the speakers just plugging in the ultra-compact USB receiver and offer a high-definition, interference-free transmission thanks to the 2.4GHz technology.

V WAVE loudspeakers can be used in a variety of applications, ranging from speech diffusion and music playback to live music and DJ sets. The extremely versatile cabinets can be mounted on standard speaker poles and the V12WAVE is even fitted with a luggage-style extra handle and two wheels.



V10WAVE

- Bi-amplified 2-way system
- 1" high-definition neodymium compression driver on a wide-dispersion 90° x 60° constant coverage horn
- 10" long-excursion woofer with 2" voice coil
- 600 W total peak power amplifier
- 3ch built-in mixer with MP3 player and BT
- Two USB inputs for 2.4GHz wireless microphones
- SPL MAX 123 dB
- Frequency response 60 Hz - 20 kHz
- 14.5 kg total weight



BT LINK function for connecting one bluetooth device in STEREO mode to two V WAVE speakers

V12WAVE

- Bi-amplified 2-way system
- 1" high-definition neodymium compression driver on a wide-dispersion 90° x 60° constant coverage horn
- 12" long-excursion woofer with 2.5" voice coil
- 600 W total peak power amplifier
- 3ch built-in mixer with MP3 player and BT
- Two USB inputs for 2.4GHz wireless microphones
- SPL MAX 124 dB
- Frequency response 50 Hz - 20 kHz
- 15.5 kg total weight



Two USB inputs for connecting 2.4GHz wireless microphones

	V10WAVE	V12WAVE
MIXER Section		
MONO inputs	2 x MIC/LINE IN (XLR-F + 1.4" JACK)	
STEREO input	1 x LINE IN (2xRCA + MINI-JACK)	
WIRELESS inputs	2 x USB TYPE-A	
Outputs	MONO LINE OUT (1.4" JACK)	
Main EQ	2-band EQ (HIGH + LOW)	
MULTIMEDIA Section		
Player Type	USB / SD / BLUETOOTH player with BT LINK	
Compatible File Formats	MP3	
Control Interface	LCD display, CONTROL buttons	
AMPLIFIER Section		
Total Peak Power	600 W	
Continuous Power	300 W	
Amplifier Type	Class D	
Power Supply	SMPS	
Processing	Analog	
LOUDSPEAKER Section		
System Type	2-way vented enclosure	
High Frequency Device	1" horn loaded neodymium compression driver	
Low Frequency Device	10" woofer with 2"VC	12" woofer with 2.5"VC
Angular Coverage	90° H x 60° V	
Frequency Response	60 Hz - 20 kHz	50 Hz - 20 kHz
Max SPL	123	124
GENERAL Specifications		
Construction	Polypropylene	
Cabinet Colour	Black	
Handles	1 x top	1 x top, 1 x top retractable
Wheels	-	2 rear
Mounting Pole	1 x bottom	
Dimensions (WxHxD)	330 x 514 x 286 mm	380 x 603 x 359 mm
Weight	14.5 kg (31.9 lb.)	15.5 kg (34.2 lb.)
Power Supply	230 V~ or 115 V~ 50/60 Hz with LINE VOLTAGE selector	
Rated Consumption	300 W	

OPTIONAL ACCESSORIES

COVER V10FW



Cover for V10FREE and V10WAVE

COVER V12FW



Cover for V12FREE and V12WAVE



V FREE SERIES

PROEL V FREE systems gives you the freedom to perform your music or play your sound anywhere, with a **superb sound quality** and without the hassle of laying down cables or finding a power outlet.

V10FREE and **V12FREE** are **battery-powered** portable sound systems featuring a powerful **400W amplifier**, a built-in **3-channel mixer** with effect and tone controls and an advanced **MP3 player with BLUETOOTH connectivity**, featuring a large back-lit LCD display and able to play songs from SD card, USB MEMORY STICK or directly from your smartphone or tablet.

They includes also **two USB inputs** for connecting **PROEL U24H or U24B 2.4GHz Wireless Microphones with USB receiver**, available both with handheld and bodypack transmitter. Just plug in the ultra-compact USB receiver and you can instantly use a professional wireless system, offering a high-definition, interference-free transmission thanks to the 2.4GHz technology. The premium loudspeakers, the Class D power amplifier and the sophisticated processing provide a superb sound quality, while the built-in Li-ion battery allows for up to **10 hours of mains-free continuous operation**, for the maximum freedom of use.

Both these **ultra-portable and light-weight** systems (10kg and 11kg respectively) can be installed on standard speaker poles and the V12FREE is fitted with a luggage-style extra handle and two wheels.

Incredibly simple to set-up and use, V FREE loudspeakers are perfect for a wide range of applications, including parties, schools, corporate and educational presentations, seminars, gym, weddings, live music and even DJ sets.



V10FREE

- Bi-amplified 2-way system
- 1" high-definition neodymium compression driver
- 10" long-excursion woofer with 1.5" voice coil
- 400 W total peak power amplifier
- Li-Ion battery for 10 hours continuous use
- 3ch built-in mixer with MP3 player and BT
- Two USB inputs for 2.4GHz wireless microphones
- SPL MAX 122 dB
- Frequency response 60 Hz - 20 kHz
- 10 kg total weight



V12FREE

- Bi-amplified 2-way system
- 1" high-definition neodymium compression driver
- 12" long-excursion woofer with 2" voice coil
- 400 W total peak power amplifier
- Li-Ion battery for 10 hours continuous us
- 3ch built-in mixer with MP3 player and BT
- Two USB inputs for 2.4GHz wireless microphones
- SPL MAX 123 dB
- Frequency response 50 Hz - 20 kHz
- 11 kg total weight



	V10FREE	V12FREE
MIXER Section		
MONO inputs	2 x MIC/LINE IN (XLR-F + 1.4" JACK)	
STEREO input	1 x LINE IN (2xRCA + MINI-JACK)	
WIRELESS inputs	2 x USB TYPE-A	
Internal EFFECT	ECHO	
Outputs	MONO LINE OUT (1.4" JACK)	
Main EQ	2-band EQ (HIGH + LOW)	
MULTIMEDIA Section		
Player Type	USB / SD / BLUETOOTH player	
Compatible File Formats	MP3	
Control Interface	LCD display, CONTROL buttons	
AMPLIFIER Section		
Total Peak Power	400 W	
Continuous Power	200 W	
Amplifier Type	Class D	
Power Supply	SMPS	
Processing	Analog	
LOUDSPEAKER Section		
System Type	2-way vented enclosure	
High Frequency Device	1" horn loaded neodymium compression driver	
Low Frequency Device	10" woofer with 1.5"VC	12" woofer with 2"VC
Angular Coverage	90° H x 60° V	
Frequency Response	60 Hz - 20 kHz	50 Hz - 20 kHz
Max SPL	122	123
GENERAL Specifications		
Construction	Polypropylene	
Cabinet Colour	Black	
Handles	1 x top	1 x top, 1 x top retractable
Wheels	-	2 rear
Mounting Pole	1 x bottom	
Dimensions (WxHxD)	330 x 514 x 286 mm	380 x 603 x 359 mm
Weight	10 kg (22.1 lb.)	11 kg (24.3 lb.)
Recharge Battery	11.1 V / 8000 mAh Li-ion	
Battery Recharging Time	4-5 hours	
Battery Working Time	10-12 hours	
Power Supply	100 V-240 V ~ 50/60 Hz	
Rated Consumption	300 W	



Rechargeable Li-Ion battery for 10 hours continuous use



MP3 player with large LCD and BLUETOOTH connection

OPTIONAL ACCESSORIES

COVER V10FW



Cover for V10FREE and V10WAVE

COVER V12FW



Cover for V12FREE and V12WAVE



U24 SERIES

The Ultimate USB Digital Wireless solution

The **U24 USB** Wireless Microphones are **professional wireless systems** offering a high-definition, interference-free transmission thanks to the **2.4GHz technology** and featuring an **ultra-compact USB receiver**.

The receiver is powered thru the USB interface and features a dual-mode audio interface for an auto-sensing connection **both to analog and digital devices**. It features a plug-and-play operation with no driver installation required and it can be connected to any **PC/MAC** for recording directly into your favorite DAW application. Using a proper USB type-A adapter it can be also connected to **IOS or Android devices** for digital stand alone applications. Finally, it can be plugged into any PROEL device featuring a USB WIRELESS input (such as **V FREE and V WAVE speakers**) for using a professional microphone system in a flash and without the hassle of cables.

The digital 2.4GHz wireless technology offers superior sound quality and maximum reliability, avoiding interferences from television stations and other broadcast devices. The transmitter is automatically paired to the receiver and the **intelligent frequency hopping** ensures a stable connection.

U24H includes a handheld microphone featuring a **high-quality dynamic capsule** for dedicated vocal applications.

Two USB inputs for connecting U24 2.4GHz wireless microphones

U24H



U24B



- 2.4 GHz ISM license-free operating band with Intelligent Frequency Hopping
- Ultra-compact USB receiver with dual-mode audio interface
- Easy pairing and memorization of matched devices
- More than 25 meters (100 ft) operating range in open spaces
- Applications: video production, podcasting, video blogging, presentations, lectures and seminars

U24H – Receiver

Frequency Range	2.404 – 2.476 GHz
RF Sensitivity	-78 dB
Frequency Response	50 Hz – 15 KHz
Sampling	16 bit @ 38.5KHz
THD	<0.05% @ 1KHz
SN Ratio	>85 dB
Transmission Delay	18.3 mS
Output Connector	USB Type-A
Audio Output Level	4dBu (1000mV)
Current	<55mA
Operating Temperature	-10 °C ~ 50 °C
Dimensions (WxHxD)	94 x 26 x 9.5 mm

WM24M – Handheld Transmitter

Frequency Range	2.404 – 2.476 GHz
Transmitting Power	< 10 dBm
Transmission Distance	Up to 25m (open space)
Frequency Response	50 Hz – 15 KHz
Sampling	16 bit @ 38.5KHz
THD	<0.05% @ 1KHz
SN Ratio	>85 dB
Transmission Delay	18.3 mS
Power Supply Battery	2x1.5V AA alkaline type
Operating Time	Up to 20 hours
Dimensions (WxHxD)	H: 278 x Ø: 47 mm



Ultra-compact USB receiver featuring a dual-mode analog and digital connection.



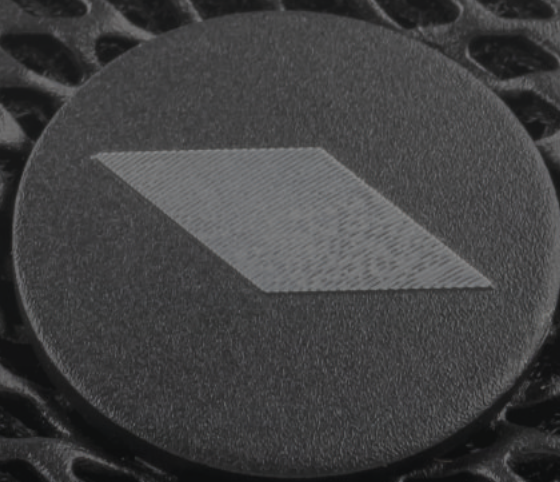
AN INCREDIBLE NUMBER OF APPLICATIONS FOR RECORDING, EDUCATION, JOURNALISM, GAMING, VOIP AND PODCASTING

The U24 directly connects to PC, Mac computers or portable devices for digital stand alone applications.



The U24 directly connects to PC, Mac computers or portable devices for digital stand alone applications.

DIVA



DIVA SERIES

DIVA12A and **DIVA15A** are **digitally processed** active loudspeaker systems featuring multiple inputs and a versatile **BLUETOOTH** connectivity.

Hosted in lightweight yet ultra-durable polypropylene cabinets with ergonomic handles, they combine selected transducers driven with a powerful **1000W CLASS-D amplifier** with SMPS, featuring high headroom and an accurate dynamic control for the maximum undistorted output power. The sophisticated pre-amp section includes an advanced processing with **high-performance DSP engine and linear phase FIR filters**, for a very smooth response and high-definition sound.



An intuitive user's interface with **LCD color display** and **single-knob control** is available for a quick selection and display of the **5 available EQ presets** (MUSIC, LIVE, DJ, MONITOR, SPEECH), allowing the speakers to be perfectly adapted to any kind of application.

Thanks to the built-in **3-channel mixer** with MIC/GUITAR/LINE input selection, HIGH and LOW EQ controls and **two WIRELESS USB inputs** for the use of PROEL U24 microphone systems, the DIVA12A and DIVA15A can be used in a variety of applications also without external equipment.

The **BLUETOOTH** interface allows to reproduce audio in mono streaming with a single speaker or in stereo streaming with two speakers and the **STEREO LINK (TWS) function**.





High-performance DSP engine and linear phase FIR filters.



3-channel mixer with MIC/ GUITAR/LINE input selection
HIGH and LOW EQ



Lightweight PP cabinets with wedge angle and dedicated MONITOR DSP preset



DIVA12A NEW

- 2-way active processed loudspeaker system
- 1" high-definition compression driver with 1.35" VC and titanium diaphragm
- Wide-coverage 90° x 60° constant directivity horn
- 12" long-excursion woofer with 2" voice coil
- High-efficiency 1000 W peak Class D power amplifier with SMPS
- Built-in 3-channel mixer with MIC/LINE inputs and HIGH & LOW EQ controls
- High-definition DSP with 24-bit converters and FIR filters
- 5 DSP presets (MUSIC, LIVE, DJ, MONITOR, SPEECH)
- BLUETOOTH audio interface with STEREO LINK
- Color LCD display for the DSP editing
- SPL MAX: 127 dB
- Frequency response: 50 Hz - 20 kHz
- Lightweight, compact and ultra-durable PP cabinet
- 2 ergonomic handles for effortless transportation
- Slanted shape for the use as a stage monitor
- Four M10 flying points

DIVA12A	
System type	2-way vented enclosure
High Frequency Device	1" compression driver with 1.35" voice coil and titanium diaphragm
Low Frequency Device	12" woofer with 2" VC
Angular Coverage	90° H x 60° V
Total Peak Power	1000 W
HF Amplifier Continuous Power	100 W Class AB
LF Amplifier Continuous Power	400 W Class D
Power Supply	SMPS
System Processing	DSP
Frequency Response	50 Hz - 20 kHz
Max SPL	127 dB
Inputs	2 x MIC/LINE (COMBO), 1 x STEREO LINE (MINIJACK), 2 x USB WIRELESS
Outputs	1 x selectable MIX OUT / CH1 LINK (M-XLR)
Controls	CHANNEL LEVEL, INPUT SELECTOR, HIGH & LOW EQ, ROTARY PUSH ENCODER, COLOR LCD
Bluetooth	Version 5.0, Audio Streaming, STEREO LINK (TWS)
Power Supply	100-120 V ~ or 220-240 V ~ at 50/60 Hz with self-switch
Rated Consumption*	300 W
GENERAL SPECIFICATIONS	
Floor Monitor Angle	45°
Flying System	4 x M10 - top/bottom
Cabinet Material	Polypropylene
Handles	1 x top, 1 x side
Mounting Pole	1 x bottom
Dimensions (W x H x D)	364 x 617 x 346 mm
Weight	16.0 kg (35.3 lb)

* Rated consumption is measured with pink noise with a crest factor of 12 dB, this can be considered a standard music program.

DIVA15A



- 2-way active processed loudspeaker system
- 1" high-definition compression driver with 1.35"VC and titanium diaphragm
- Wide-coverage 90° x 60° constant directivity horn
- 15" long-excursion woofer with 2.5" voice coil
- High-efficiency 1000 W peak Class D power amplifier with SMPS
- Built-in 3-channel mixer with MIC/LINE inputs and HIGH & LOW EQ controls
- High-definition DSP with 24-bit converters and FIR filters
- 5 DSP presets (MUSIC, LIVE, DJ, MONITOR, SPEECH)
- BLUETOOTH audio interface with STEREO LINK
- Color LCD display for the DSP editing
- SPL MAX: 129 dB
- Frequency response: 45 Hz - 20 kHz
- Lightweight, compact and ultra-durable PP cabinet
- 2 ergonomic handles for effortless transportation
- Slanted shape for the use as a stage monitor
- Four M10 flying points

DIVA15A	
System type	2-way vented enclosure
High Frequency Device	1" compression driver with 1.35" voice coil and titanium diaphragm
Low Frequency Device	15" woofer with 2.5" VC
Angular Coverage	90° H x 60° V
Total Peak Power	1000 W
HF Amplifier Continuous Power	100 W Class AB
LF Amplifier Continuous Power	400 W Class D
Power Supply	SMPS
System Processing	DSP
Frequency Response	45 Hz - 20 kHz
Max SPL	129 dB
Inputs	2 x MIC/LINE (COMBO), 1 X STEREO LINE (MINIJACK), 2 x USB WIRELESS
Outputs	1 x selectable MIX OUT / CH1 LINK (M-XLR)
Controls	CHANNEL LEVEL, INPUT SELECTOR, HIGH & LOW EQ, ROTARY PUSH ENCODER, COLOR LCD
Bluetooth	Version 5.0, Audio Streaming, STEREO LINK (TWS)
Power Supply	100-120 V~ or 220-240 V~ at 50/60 Hz with self-switch
Rated Consumption*	300 W
GENERAL SPECIFICATIONS	
Floor Monitor Angle	45°
Flying System	4 x M10 - top/bottom
Cabinet Material	Polypropylene
Handles	1 x top, 1 x side
Mounting Pole	1 x bottom
Dimensions (W x H x D)	421 x 696 x 382 mm
Weight	19.0 kg (41.8 lb)

* Rated consumption is measured with pink noise with a crest factor of 12 dB, this can be considered a standard music program.



Two WIRELESS USB inputs for U24 microphone systems and BLUETOOTH STEREO TWS interface

OPTIONAL ACCESSORIES

U24H



2.4GHz USB Wireless Handheld Microphone System

U24B



2.4GHz USB Wireless Bodypack Microphone System





FLASH X SERIES

With FLASH X PROEL introduces the third generation of a series of loudspeakers that represented a reference for compact, portable systems for years. The new FLASH X continue a long history of high-definition sound, reliability and rugged construction in an affordable package, adding now significant steps forward in technology and a brand new style, and still offering the best-in-class performance, features and design.

The use of carefully selected and customized speakers, including high-definition compression drivers and long-excursion woofers, provide an accurate acoustic response and an amazing sound pressure level with very low distortion.

Common features of FLASH X are compact and lightweight PP cabinets with extended internal ribbing and symmetrical wedge angle, constant wide-coverage (90° x 60°) horns for a uniform and coherent sound dispersion, newly-designed ergonomic aluminum handles and built-in flying points for the use in fixed installation.

FLASH X SERIES



Compact, lightweight and ultra-durable PP injected cabinet



Wide-coverage 90° x 60° constant directivity horns for an even sound dispersion in any venue



Ergonomic, ultra-comfortable aluminum handles for an effortless transportation



Symmetrical 42° wedge angle for stage monitoring

FLASH8XP

- Passive 2-way loudspeaker system
- 1" compression driver with 1"VC
- Wide-coverage 90° x 60° constant directivity horn
- 8" woofer with 1.5"VC
- 600 W peak power
- 300 W program power
- 2 x SPEAKON connections
- SPL MAX 122 dB
- Frequency response 70 Hz - 20 kHz



FLASH12XP

- Passive 2-way loudspeaker system
- 1" compression driver with 1.35"VC and titanium diaphragm
- Wide-coverage 90° x 60° constant directivity horn
- 12" woofer with 2.5"VC
- 1000 W peak power
- 500 W program power
- 2 x SPEAKON connections
- SPL MAX 127 dB
- Frequency response 60 Hz - 20 kHz



FLASH5AV2

FLASH5PV2



- Bi-amplified 2-way system
- Studio-grade dome tweeter on elliptical waveguide
- 5" woofer with PP cone
- 200W total peak power
- SPL MAX 114 dB
- Frequency response 70 Hz - 20 kHz
- Passive version available in BLACK (FLASH5P) and WHITE (FLASH5PW)

ACTIVE	FLASH5AV2
System type	2-way vented enclosure
High Frequency Device	Soft dome tweeter on elliptical waveguide
Low Frequency Device	5 woofer with PP cone
Angular Coverage	90° H x 60° V
Total Peak Power	200 W
HF Amplifier Continuous Power	20 W Class AB
LF Amplifier Continuous Power	80 W Class D
Power Supply	Linear
Processing	Analog
Frequency Response	70 Hz - 20 kHz
Max SPL	114
Connectors	IN/LINK: XLR F, 1/4 JACK, 2 x RCA
Controls	LEVEL, NEARFIELD/MIDFIELD, GND LIFT
Power Supply	230 VAC or 120 VAC 50/60 Hz
Weight	3.6 kg (7.9 lb)

PASSIVE	FLASH5PV2	FLASH8XP	FLASH12XP
Nominal Impedance	16 Ω	8 Ω	8 Ω
Power Continuous (AES)	80 W	150 W	300 W
Power Program		300 W	500 W
Power Peak	160 W	600 W	1000 W
Frequency Response	80 Hz - 20 kHz	70 Hz - 20 kHz	60 Hz - 20 kHz
Sensitivity	91 dB @ 1 W/1 m	96 dB @ 1 W/1 m	99 dB @ 1 W/1 m
Crossover Frequency	3000 Hz	3000 Hz	2000 Hz
Connectors	Push terminals	2 x SPEAKON linked	2 x SPEAKON linked
Weight	2.5 kg (5.5 lb)	8.5 kg (18.7 lb)	18.5 kg (40.7 lb)

GENERAL SPECIFICATIONS			
Floor Monitor Angle	42°	42°	42°
Flying System	3 x M6 - top/bottom	4 x M8 - top/bottom	4 x M10 - top/bottom
Cabinet Material	Polypropylene	Polypropylene	Polypropylene
Handles	1 x top	1 x top aluminum	2 x sides, 1 x top aluminum
Pole Socket	-	1 x bottom	1 x bottom
Dimensions (W x H x D)	175 x 265 x 176.5 mm	270 x 422 x 250 mm	390 x 623 x 350 mm



OPTIONAL ACCESSORIES



SNWH
ABS installation bracket
for FLASH5PW (white)



SNBK
ABS installation bracket
for FLASH5P (black)

COVERFL8X
COVERFL12X



KPTFL5
KPTFL5W



Brackets for FLASH5
Black and White

KPTFL8X - KPTFL12X



Brackets for FLASH8 - FLASH12

 **KPTLTP**

 **KPTLTPW**



Bracket for FLASH8XP and FLASH12XP



LITE SERIES

The LITE Series by PROEL is an extended range of active and passive speaker systems with plywood cabinet offering the renowned **PROEL sound** and a **high-level performance** in a reliable and affordable package.

For the construction of the cabinets we have used **plywood**, a very lightweight and durable material that makes moving and installing these speakers very quick and easy. Strong, anti-scratch paint and steel grilles with an internal foam layer provide proper **protection** for years of service. The **dual-angle pole holder** featured in 8", 10", 12" and 15" models offers the possibility to obtain a more uniform coverage of the audience.

For the high frequency reproduction of LITE Series we have designed **wide-dispersion horns**, able to provide constant coverage for large audiences and detailed response with low distortion. The **high-excursion woofers**, together with carefully tuned vented cabinets, offers an extended response with deep and tight basses.

The LITE Series includes **6 active models** ranging from 6.5" to dual 15" woofers, plus 1 satellites + subwoofer system. The extremely lightweight power modules used in the active models feature the **latest technologies for amplification**, such as Switch Mode Power Supply and CLASS D output stages, which provides a massive amount of power with a reduced weight. The power modules are hosted in fully-sealed die-cast aluminum boxes that provides protection, perfect insulation of the cabinet from the outside and extremely efficient cooling. Each module includes a **sophisticated pre-amp section** with up to 24 dB/oct. phase aligned crossover filters and active EQ filters for the system's fine tuning. The **DUAL LIMITER circuit** ensures an undistorted sound even at the loudest level and a total loudspeaker protection.

4 passive models are also available, featuring carefully designed crossover filters with HF electronic protection. The choice of black or white cabinet, built-in flying points and a wide range of **accessories** make them suitable for any kind of fixed installation.



Versatile and unobtrusive KPTLTP wall bracket for the passive models



Ergonomic handles for an effortless transportation and dual-angle pole sockets



Wide dispersion controlled directivity horns with HF selected transducers for a high sound definition

LT6A / LT6P



- Active 2-way loudspeaker systems
- 1" neodymium tweeter
- 6.5" woofer with 1" VC
- 150 W peak power
- SPL MAX 110 dB
- Frequency response 75 Hz - 20 kHz
- LT6P: passive version available in BLACK and WHITE



LT8A / LT8P



- Active 2-way loudspeaker systems
- 1" compression driver with 1" VC on a constant coverage 60° x 40° horn
- 8" woofer with 1.5" VC
- 400 W peak power
- SPL MAX 121 dB
- Frequency response 70 Hz - 20 kHz
- LT8P: passive version available in BLACK and WHITE



LT10A / LT10P



- Active 2-way loudspeaker systems
- 1" compression driver with 1" VC on a constant coverage 90° x 60° horn
- 10" woofer with 2" VC
- 600 W peak power
- SPL MAX 123 dB
- Frequency response 60 Hz - 20 kHz
- LT10P: passive version available in BLACK and WHITE



LT12A / LT12P



- Active 2-way loudspeaker systems
- 1" compression driver with 1.35" VC on a constant coverage 90° x 60° horn
- 12" woofer with 2.5" VC
- 600 W peak power
- SPL MAX 124 dB
- Frequency response 50 Hz - 20 kHz
- LT12P: passive version available in BLACK and WHITE



M8 / M10 flying points for the use of a complete range of dedicated accessories for installation

LT15A

- Active 2-way loudspeaker systems
- 1" compression driver with 1.35" VC on a constant coverage 90° x 60° horn
- 15" woofer with 2.5" VC
- 600 W peak power
- SPL MAX 126 dB
- Frequency response 45 Hz - 20 kHz



Ultra-lightweight, high-efficiency Class D power amplifiers with SMPS





Easy and effortless transportation of the whole system



3-channel CLASS D+AB lightweight and powerful amplifier module

OPTIONAL ACCESSORIES



COVERLT812A

LT812A

- 3-way SAT + SUB active loudspeaker system
- SAT: 1" compression driver + 8" woofer with 1.5" VC
- SUB: 12" woofer with 3" VC
- 1600W peak power
- SPL MAX 121dB + 124dB
- Frequency response 45 Hz - 20 kHz
- Two SPEAKON power cables included



	LT812SAT	LT812SUB
System type	2-way vented enclosure	Vented sub-woofer
High Frequency Device	1" compression driver with 1" VC	-
Low Frequency Device	8" woofer with 1.5" VC	12" woofer with 3" voice coil
Angular Coverage	60° H x 40° V	-
Max SPL	121	124
System Frequency Response	45 Hz - 20 kHz	
Amplifier Total Peak Power	1600 W	
Amplifier Continuous Power	SAT: 2 x 200 W Class AB - SUB: 400 W Class D	
Power Supply	SMPS	
Processing	Analog	
Controls	SUB LEVEL, GND LIFT	
Connectors	1 x SPEAKON	IN: 2 x COMBO, LINK: 2 x XLR M OUT: 2 x SPEAKON
Cabinet construction	Plywood with anti-scratch paint	Plywood with anti-scratch paint
Cabinet Colour	Black	Black
Handles	1 x rear	2 x sides
Mounting Pole	1 x bottom, dual angle	1 x top
Power Supply	230 VAC or 120 VAC 50/60 Hz with LINE VOLTAGE selector	
Dimensions (W x H x D)	220 x 442 x 260 mm	475 x 462 x 610 mm
Weight	7.5 kg / 16.5 lbs.	34 kg / 74.9 lbs.

ACTIVE	LT6A	LT8A	LT10A	LT12A	LT15A	LT215A
System type	2-way vented enclosure	2-way vented enclosure	2-way vented enclosure	2-way vented enclosure	2-way vented enclosure	3-way vented enclosure
High Frequency Device	1" neodymium tweeter	1" compression driver with 1" VC	1" compression driver with 1" VC	1" compression driver with 1.35" VC	1" compression driver with 1.35" VC	1" compression driver with 1.35" VC
Low Frequency Device	6.5" woofer with 1" VC	8" woofer with 1.5" VC	10" woofer with 2" voice coil	12" woofer with 2.5" voice coil	15" woofer with 2.5" VC	2x15" woofer with 2.5" VC
Angular Coverage	60° H x 40° V	60° H x 40° V	90° H x 60° V	90° H x 60° V	90° H x 60° V	90° H x 60° V
Total Peak Power	150 W	400 W	600 W	600 W	600 W	1200 W
HF Amplifier Continuous Power	75 W	50 W Class AB	50 W Class AB	50 W Class AB	50 W Class AB	100 W Class AB
LF Amplifier Continuous Power		150 W Class D	250 W Class D	250 W Class D	250 W Class D	500 W Class D
Power Supply	LINEAR	SMPS	SMPS	SMPS	SMPS	SMPS
Processing	Analog	Analog	Analog	Analog	Analog	Analog
Frequency Response	75 Hz - 20 kHz	70 Hz - 20 kHz	60 Hz - 20 kHz	50 Hz - 20 kHz	45 Hz - 20 kHz	40 Hz - 20 kHz
Max SPL	110 dB	121	123	124	126	132
Connectors	IN: COMBO, 2xRCA LINK: XLR M	IN: COMBO, LINK: XLR M	IN: COMBO, LINK: XLR M	IN: COMBO, LINK: XLR M	IN: COMBO, LINK: XLR M	IN: COMBO, LINK: XLR M
Controls	LEVEL, LINE/MIC selector	LEVEL, LINE/MIC selector LOW EQ, HIGH EQ, GND LIFT FRONT LED selector	LEVEL, LINE/MIC selector LOW EQ, HIGH EQ, GND LIFT FRONT LED selector	LEVEL, LINE/MIC selector LOW EQ, HIGH EQ, GND LIFT FRONT LED selector	LEVEL, LINE/MIC selector LOW EQ, HIGH EQ, GND LIFT FRONT LED selector	LEVEL, LINE/MIC selector LOW EQ, HIGH EQ, GND LIFT FRONT LED selector
Power Supply	230 VAC or 120 VAC 50/60 Hz with LINE VOLTAGE selector	230 or 120 VAC 50/60 Hz with LINE VOLTAGE selector	230 or 120 VAC 50/60 Hz with LINE VOLTAGE selector	230 or 120 VAC 50/60 Hz with LINE VOLTAGE selector	230 or 120 VAC 50/60 Hz with LINE VOLTAGE selector	230 or 120 VAC 50/60 Hz with LINE VOLTAGE selector
Weight	5.9 kg / 13 lbs	8.5 kg / 18.7 lbs.	12.5 kg / 27.6 lbs.	16.5 kg / 36.4 lbs.	21 kg / 46.3 lbs.	34 kg / 74.9 lbs.

PASSIVE	LT6P	LT8P	LT10P	LT12P
Nominal Impedance	8 ohm	8 ohm	8 ohm	8 ohm
Power Continuous (AES)	75 W	150W	200 W	300 W
Power Program	150 W	300 W	400 W	600 W
Power Peak	300 W	600 W	800 W	1200 W
Frequency Response	75 Hz - 20 kHz	70 Hz - 20 kHz	60 Hz - 20 kHz	50 Hz - 20 kHz
SPL (1w / 1m)	88 dB	92 dB	94 dB	96 Db
Crossover Frequency	3000 Hz	3000 Hz	2000 Hz	2000 Hz
Connectors	2 x SPEAKON, 2 x JACK	2 x SPEAKON	2 x SPEAKON	2 x SPEAKON
Weight	4.9 kg / 10.8 lbs.	7.5 kg / 16.5 lbs.	11.5 kg / 25.4 lbs.	15.5 kg / 34.2 lbs.

GENERAL SPECIFICATIONS

Flying System	1 x M4 top / 2 x M4 bottom 2 x M5 rear (only passive)	4 x M10 top/bottom 3 x M5 rear (only passive)	4 x M10 top/bottom 3 x M5 rear (only passive)	4 x M10 top/bottom 3 x M5 rear (only passive)	4 x M10 - top/bottom	4 x M10 - top/bottom
Cabinet Material	Plywood with anti-scratch paint	Plywood with anti-scratch paint	Plywood with anti-scratch paint	Plywood with anti-scratch paint	Plywood with anti-scratch paint	Plywood with anti-scratch paint
Cabinet Colour	Black (active) Black or White (passive)	Black (active) Black or White (passive)	Black (active) Black or White (passive)	Black (active) Black or White (passive)	Black	Black
Handles		1 x rear	1 x rear	2 x sides	2 x sides	1 x top, 2 x sides
Pole Socket		1 x bottom, dual angle	1 x bottom, dual angle	1 x bottom, dual angle	1 x bottom, dual angle	1 x bottom
Dimensions (W x H x D)	204 x 295 x 223 mm	220 x 442 x 260 mm	340 x 515 x 310 mm	380 x 595 x 360 mm	448 x 670 x 410 mm	448 x 1060 x 450 mm

OPTIONAL ACCESSORIES

- KPTLT P
- KPTLT P W



Brackets for LT PASSIVE

- KPTLT6 - KPTLT8
- KPTLT6W - KPTLT8W



Brackets for LT6 - LT8

- KPTLT10 - KPTLT12
- KPTLT10W - KPTLT12W



Brackets for LT10 - LT12



S SERIES



PROEL introduces the **S Series**, a new range of compact and powerful sub-woofers designed to complement PROEL full-range passive or active speakers. The **variety of size, power and SPL** offered by the four S models provides, at an unbeatable price point, the perfect low extension solution for any speaker model available in the PROEL range.

All the S models feature high-excursion woofers in a **Hybrid Band Pass configuration (HBP)**. This innovative design provides a higher efficiency compared to direct radiation sub-woofers and, in addition, guarantees a much better coupling of the tuning ducts with the external air, reducing the distortion and the air turbulence, for a **more defined sound and deep and punchy lows**.

The new **CLASS D** amplifier modules with SMPS (Switch Mode Power Supply) can generate a massive amount of continuous power in a compact, lightweight and reliable package. All the modules include a **STEREO pre-amp section**, 24dB/oct. crossover filters with selectable frequency and PHASE reverse switch.

The cabinets are built with 15/18mm plywood and finished with **extra-durable polyurethane paint**. They feature two flush handles and four sturdy 75mm wheels for an easy transport (S15 and S18 only).



S18A

- Compact active HBP sub-woofer
- 18" woofer with 3"VC for a deep and extended response
- 1200 W peak power
- STEREO input, link and output
- SPL MAX 131 dB
- Frequency response 36 Hz - 140 Hz
- Passive version available (S18P)



S15A

- Compact active HBP sub-woofer
- 15" woofer with 2.5"VC for a deep and extended response
- 1200 W peak power
- STEREO input, link and output
- SPL MAX 129 dB
- Frequency response 40 Hz - 160 Hz
- Passive version available (S15P)



Lightweight and rugged plywood cabinets with extra-durable polyurethane paint



STEREO preamp section with selectable frequency 24dB/oct. crossover filters



High-excursion woofers in Hybrid Band Pass (HBP) configuration



High-efficiency, lightweight and reliable CLASS D amplifier modules with SMPS



S12A

- Compact active HBP sub-woofer
- 12" woofer with 2.5" VC for a deep and extended response
- 1200 W peak power
- STEREO input, link and output
- SPL MAX 128 dB
- Frequency response 43 Hz - 160 Hz



Compact cabinet profile that fits perfectly on any stage and in any fixed installation



S10A

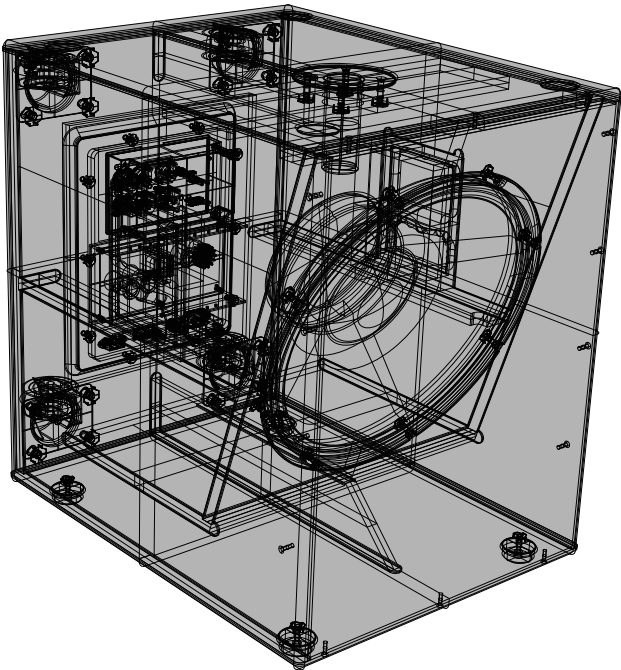
- Compact active HBP sub-woofer
- 10" woofer with 2" VC for a deep and extended response
- 700 W peak power
- STEREO input, link and output
- SPL MAX 119 dB
- Frequency response 46 Hz - 160 Hz
- Passive version available (S10P)

ACTIVE	S10A	S12A	S15A	S18A
System type	Hybrid Band Pass subwoofer	Hybrid Band Pass subwoofer	Hybrid Band Pass subwoofer	Hybrid Band Pass subwoofer
Loudspeaker	10" woofer with 2" VC	12" woofer with 2.5" VC	15" woofer with 2.5" VC	18" woofer with 3" VC
Amplifier Continuous Power	350 W	600 W	600 W	600 W
Frequency Response	46 Hz - 160 Hz	43 Hz - 160 Hz	40 Hz - 160 Hz	36 Hz - 140 Hz
Max SPL	119 dB	127dB	129dB	131 dB
Connectors	IN: 2 x NEUTRIK COMBO OUT: 2 x NEUTRIK XLR-M LINK: 2 x NEUTRIK XLR-MIN: 2 x NEUTRIK COMBO OUT: 2 x NEUTRIK XLR-M LINK: 2 x NEUTRIK XLR-M	IN: 2 x NEUTRIK COMBO OUT: 2 x NEUTRIK XLR-M LINK: 2 x NEUTRIK XLR-MIN: 2 x NEUTRIK COMBO OUT: 2 x NEUTRIK XLR-M LINK: 2 x NEUTRIK XLR-M	IN: 2 x NEUTRIK COMBO OUT: 2 x NEUTRIK XLR-M LINK: 2 x NEUTRIK XLR-MIN: 2 x NEUTRIK COMBO OUT: 2 x NEUTRIK XLR-M LINK: 2 x NEUTRIK XLR-M	IN: 2 x NEUTRIK COMBO OUT: 2 x NEUTRIK XLR-M LINK: 2 x NEUTRIK XLR-MIN: 2 x NEUTRIK COMBO OUT: 2 x NEUTRIK XLR-M LINK: 2 x NEUTRIK XLR-M
Controls	Volume, GND lift X-over Frequency, Phase	Volume, GND lift X-over Frequency, Phase	Volume, GND lift X-over Frequency, Phase	Volume, GND lift X-over Frequency, Phase
Power Supply	230 VAC or 120 VAC 50/60 Hz	230 VAC or 120 VAC 50/60 Hz	230 VAC or 120 VAC 50/60 Hz	230 VAC or 120 VAC 50/60 Hz
Weight	14 kg (30.8lb)	19 kg (41.9 lb)	26 kg (57.3 lb)	34.5 kg (76 lb)

PASSIVE	S10P	S15P	S18P
Nominal Impedance	8 Ω	8 Ω	8 Ω
Power Continuous (AES)	200 W	400 W	500 W
Power Program	400 W	800 W	1000 W
Power Peak	800 W	1600 W	2000 W
Frequency Response	46 Hz - 160 Hz	40 Hz - 160 Hz	36 Hz - 160 Hz
Sensitivity	95 dB @ 1 W/1 m	97 dB @ 1 W/1 m	98 dB @ 1 W/1 m
Connectors	2 x NEUTRIK SPEAKON (IN/LINK)	2 x NEUTRIK SPEAKON (IN/LINK)	2 x NEUTRIK SPEAKON (IN/LINK)
Weight	12.5 kg (27.5 lb)	24.5 kg (54 lb)	33 kg (72.7 lb)

GENERAL SPECIFICATIONS

Cabinet	15/18 mm plywood Black anti-scratch paint 1.5 mm metal grille 2 handles 1 x pole socket	15/18 mm plywood Black anti-scratch paint 1.5 mm metal grille 2 handles 1 x pole socket	15/18 mm plywood Black anti-scratch paint 1.5 mm metal grille 2 handles 1 x pole socket 4 x 75 mm wheels	15/18 mm plywood Black anti-scratch paint 1.5 mm metal grille 2 handles 1 x pole socket 4 x 75 mm wheels
Dimensions (W x H x D)	315x420x495 mm	360x500x520 mm	435x570x560 mm	508x630x645 mm



OPTIONAL ACCESSORIES



COVERS10



COVERS12



COVERS15



COVERS18



WX SERIES

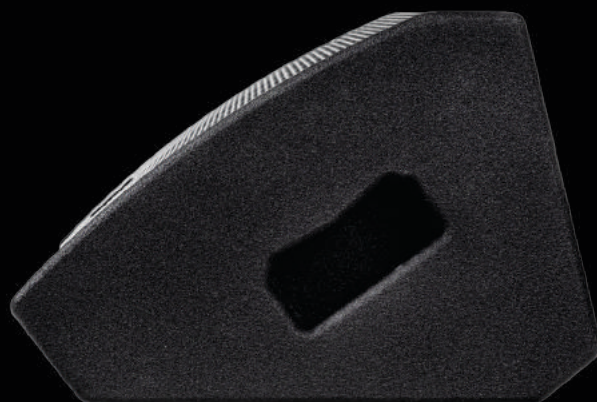


WX series stage monitors, with a perfect sound intelligibility, a high SPL and an ultra-compact format, can offer a **professional yet affordable monitoring solution able to fit into stages of any size.**

The transducers' **coaxial** design not only provides an optimal HF and LF alignment and a controlled directivity for a perfect listening from any position, but it also helps to minimize the size of the monitor. The **ultra-compact enclosures**, with integrated handle and pole socket, have been designed to feature a very low profile and, therefore, a minimal footprint on stage. The cabinets are finished with **extra-strong polyurethane painting**, making them resistant to any abuse.

The lightweight **500W CLASS D amplifier module** with SMPS provides a high output that results in an unexpected SPL for such small loudspeakers. The sophisticated analogue processing provides a detailed response, particularly in the vocal range, and a remarkable resistance to feedback. **Two EQ PRESETS** are available for the use of the speaker not only for stage monitoring (MONITOR), but also as a MAIN SOUND SYSTEM (FOH) if necessary.

The WX monitors are available in **two models**, offering the right solution for different monitoring situations. The ultracompact **WX8A** can provide a high-quality monitoring also in very small spaces and it can give its best with speech, vocals and acoustic instruments. **WX10A**, with a higher SPL and a full-range response, is ideal for vocals, guitar, horns and electronic instruments or as a monitor for DJs.



WX8A

- Active 2-way coaxial stage monitor
- 1" compression driver with 1"VC
- 8" woofer with 2"VC
- 500 W total peak power
- SPL MAX: 122dB
- Frequency response: 80 Hz - 20 kHz



Coaxial speakers for a superior sound definition and an even directivity

WX10A

- Active 2-way coaxial stage monitor
- 1" compression driver with 1"VC
- 10" woofer with 2"VC
- 500 W total peak power
- SPL MAX: 123dB
- Frequency response: 70 Hz - 20 kHz

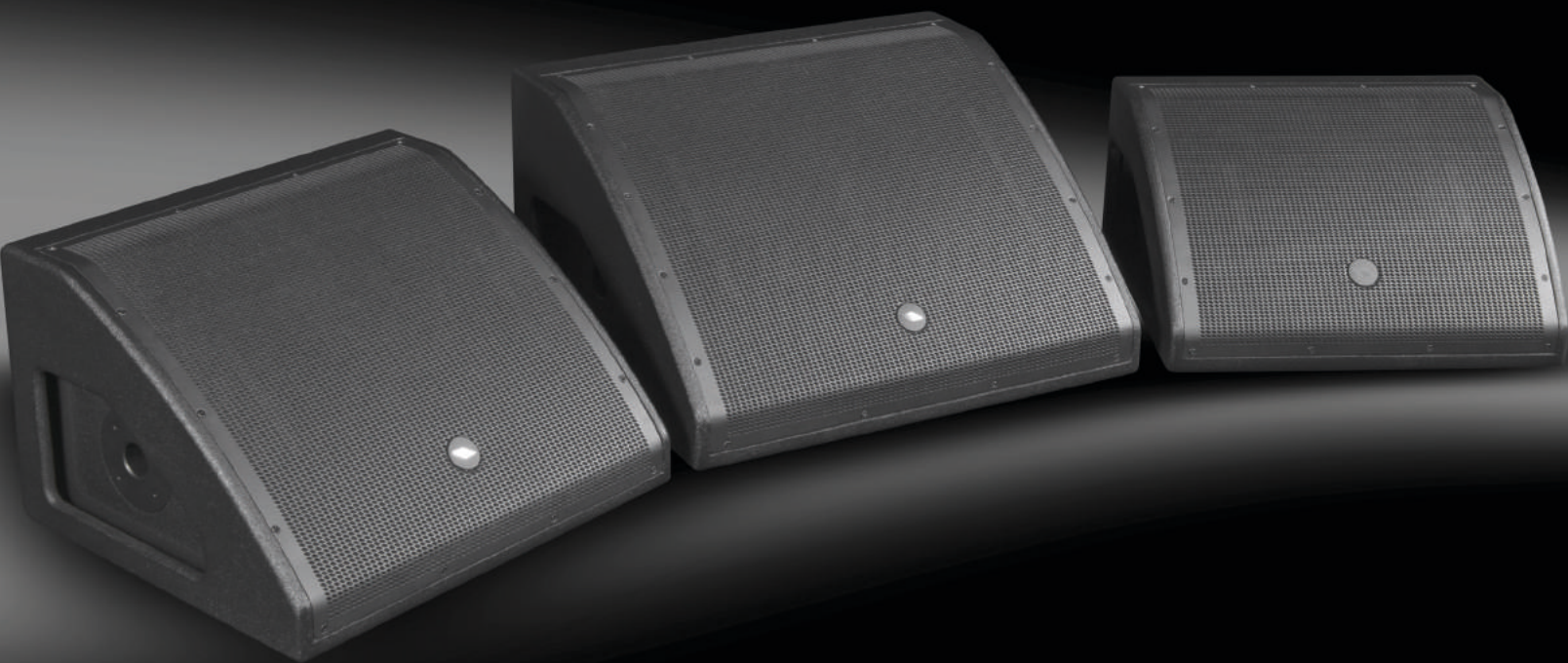


500W CLASS D power amplifiers with MONITOR and FOH EQ presets

	WX8A	WX10A
System type	2-way coaxial vented enclosure	2-way coaxial vented enclosure
High Frequency Device	1"compression driver with 1"VC	1"compression driver with 1"VC
Low Frequency Device	8" woofer with 2"VC	10" woofer with 2"VC
Angular Coverage	80° H x 80° V	80° H x 80° V
Total Peak Power	500 W	500 W
Amplifier Continuous Power	250 W Class D	250 W Class D
Power Supply	SMPS	SMPS
Processing	Analog	Analog
Frequency Response	80 Hz - 20 kHz	70 Hz - 20 kHz
Max SPL	122 dB	123 dB
Connectors	IN: Combo LINK: XLR M	IN: Combo LINK: XLR M
Controls	LEVEL, PRESET selector (MONITOR, FOH), GND lift	LEVEL, PRESET selector (MONITOR, FOH), GND lift
Power Supply	100-240 VAC 50/60 Hz	100-240 VAC 50/60 Hz
Stage Monitor Angle	36°	36°
Cabinet	MDF with black anti-scratch polyurethane paint	MDF with black anti-scratch polyurethane paint
Pole Socket	1 x side	1 x side
Handles	1 x side	1 x side
Dimensions (W x H x D)	325x336x233 mm	390x396x270 mm
Weight	8 kg (17.6 lb)	10 kg (22 lb)



Ultra-strong polyurethanic finishing for maximum strength and durability



WD SERIES V2

In the past few years with the **WEDGE Series** PROEL has set a standard for **affordable and road-proof stage monitors**, able to offer a highly valuable monitoring solution, with **perfect sound intelligibility and high SPL** in low-profile and portable enclosures. The **Version 2** of this very successful series represents a major step forward, with several design's refinements and feature's improvements.

The lightweight **CLASS D amplifier modules with SMPS** have been completely **re-designed**, to provide the utmost reliability even when the system is stressed at the highest sound pressure levels. Coupled to a **sophisticated analog processing**, they provide an extremely detailed response, particularly in the vocal range, and a remarkable resistance to feedback. Two tailored EQ PRESETS are available for the use of the speaker not only for stage monitoring (**MONITOR**), but also as a MAIN SOUND SYSTEM (**FOH**).

The stylish design of the cabinets, with integrated handles, recessed connection panel and pole socket, has been optimized **reducing further the profile** and, therefore, the footprint on the stage. Knowing very well the mistreatments the stage monitors are usually subjected to, we have greatly improved the strength of the cabinets' **polyurethane painting**, making them resistant to any abuse.

Also the **custom designed coaxial transducers**, able to provide a perfect HF and LF alignment and a controlled directivity for a perfect listening from any position, have been updated, especially the 10" that features now a compression driver with increased efficiency.

The V2 WEDGE monitors are available in three models, offering the perfect solution for any monitoring situations. The ultra-compact **WD10AV2** is able to offer a high-performance monitoring also on small stages and it's the ideal solution for speech, vocals and keyboards. **WD12AV2**, with its high SPL and its full-range response, is the favorite choice for vocals, guitar, horns and electronic instruments or as a high-power monitor for DJs. **WD15AV2**, with its full extension and powerful and deep response at the low frequencies, is the ideal monitor for bass and drums players. The horn-loaded HF section and the powerful amplifier make it the perfect solution for monitoring also on very large stages.



WD10AV2

- Active 2-way coaxial stage monitor
- 1" compression driver with 1"VC
- 10" woofer with 2"VC
- 500 W total peak power
- SPL MAX: 123dB
- Frequency response: 60 Hz - 20 kHz



WD12AV2

- Active 2-way coaxial stage monitor
- 1" compression driver with 1.35"VC
- 12" woofer with 2.5"VC
- 700 W total peak power
- SPL MAX: 124dB
- Frequency response: 50 Hz - 20 kHz



WD15AV2

- Active 2-way coaxial stage monitor
- 1" compression driver with 1.35" VC on a waveguide
- 15" woofer with 3"VC
- 900 W total peak power
- SPL MAX: 126dB
- Frequency response: 45 Hz - 20 kHz



	WD10A	WD12A	WD15A
System type	2-way coaxial vented enclosure	2-way coaxial vented enclosure	2-way coaxial vented enclosure
High Frequency Device	1" compression driver with 1"VC	1" compression driver with 1"VC	1" compression driver with 1.35"VC
Low Frequency Device	10" woofer with 2"VC	12" woofer with 2.5"VC	15" woofer with 3"VC
Angular Coverage	80° H x 80° V	80° H x 80° V	60° H x 60° V
Total Peak Power	500 W	700 W	900 W
HF Amplifier Continuous Power	50 W Class AB	50 W Class AB	50 W Class AB
LF Amplifier Continuous Power	200 W Class D	300 W Class D	400 W Class D
Power Supply	SMPS	SMPS	SMPS
Processing	Analog	Analog	Analog
Frequency Response	60 Hz - 20 kHz	50 Hz - 20 kHz	45 Hz - 20 kHz
Max SPL	123 dB	124 dB	126 dB
Connectors	IN: Combo LINK: XLR M	IN: Combo LINK: XLR M	IN: Combo LINK: XLR M
Controls	LEVEL, PRESET selector (MONITOR, FOH), GND lift	LEVEL, PRESET selector (MONITOR, FOH), GND lift	LEVEL, PRESET selector (MONITOR, FOH), GND lift
Power Supply	230 VAC or 120 VAC 50/60 Hz	230 VAC or 120 VAC 50/60 Hz	230 VAC or 120 VAC 50/60 Hz
Stage Monitor Angle	36°	36°	36°
Cabinet	Plywood with black anti-scratch polyurethane paint	Plywood with black anti-scratch polyurethane paint	Plywood with black anti-scratch polyurethane paint
Pole Socket	1 x side	1 x side	1 x side
Handles	2 x side	2 x side	2 x side
Dimensions (W x H x D)	490x265x375 mm	510x310x440 mm	600x335x490 mm
Weight	12 kg (26.4 lb)	15 kg (33 lb)	21 kg (46.3 lb)



Coaxial speakers for a superior sound definition and an even directivity



New-design CLASS D power amplifiers for improved performance and reliability



New ultra-strong polyurethane finishing for maximum strength and durability

OPTIONAL ACCESSORIES



CPWD10V2 - CPWD12V2
CPWD15V2

Wedge series flight case (for 2 unit)

COVERWD10V2
COVERWD12V2
COVERWD15V2

Wedge series padded covers

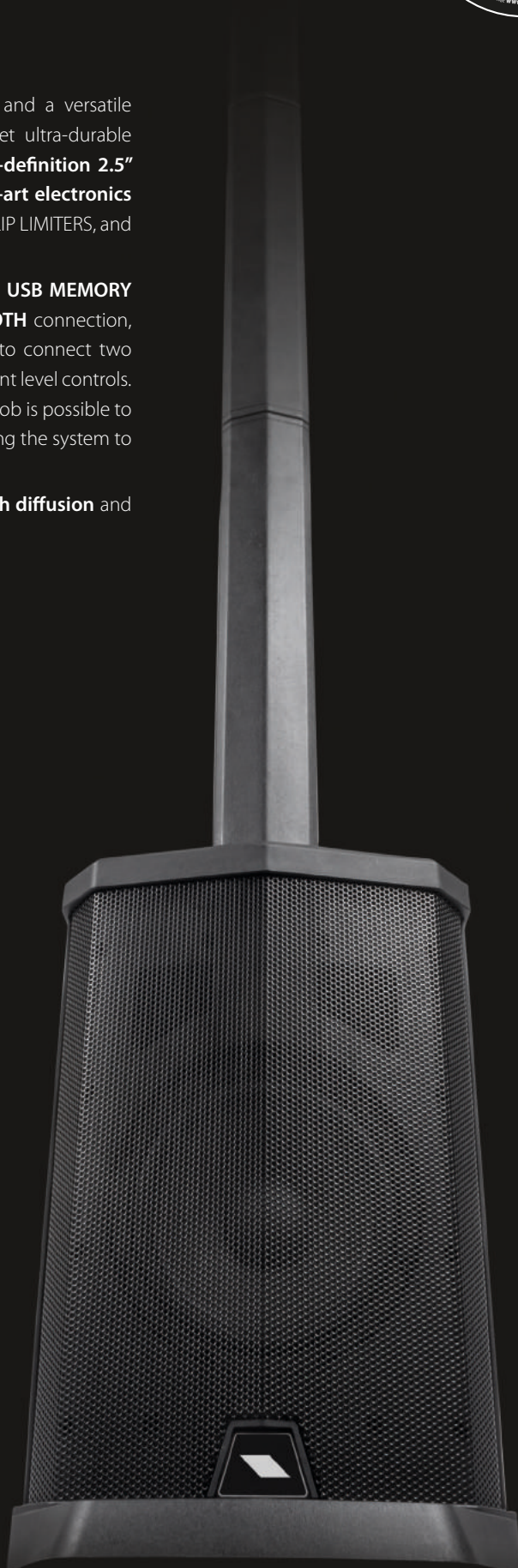
SESSION 1



SESSION1 is a **portable column system** featuring multiple inputs and a versatile MP3 player with **BLUETOOTH** connectivity. Hosted in lightweight yet ultra-durable polypropylene cabinets, it is composed by a **column with four high-definition 2.5" full-range speakers** and a powerful **8" sub-woofer**. The **state-of-the-art electronics** includes a sophisticated pre-amp section with active filtering and dual CLIP LIMITERS, and a powerful 2-channel **400W Class D** power amplifier.

The built-in MEDIA PLAYER is able to play songs from an **SD** card or a **USB MEMORY STICK**, but also from your smartphone or your tablet thru a **BLUETOOTH** connection, without the need of any cable. The built-in **3-channel mixer** allows to connect two microphone or line sources and a stereo player, each one with independent level controls. A digital EFFECT is also available for microphone inputs. With a simple knob is possible to **optimize** the sound for speech, music or low boost applications, adapting the system to any situation.

SESSION1 can be used in a variety of applications, ranging from **speech diffusion** and **music playback** to **live music** and **DJ sets**.



SESSION1 NEW

- Active portable column system
- Column with four high-definition 2.5" full-range speakers
- 8" long-excursion subwoofer
- Fast-linking system and integrated power connections to adjust the column to the desired height
- 2-channel 400 W peak Class D power amplifier with SMPS
- Sophisticated pre-amp section with active filtering and dual CLIP LIMITERS
- Built-in 3-channel mixer mixer with MIC/LINE inputs and digital EFFECT
- Sub level control (SPEECH/MUSIC/BOOST)
- USB/SD MEDIA PLAYER with BLUETOOTH audio interface with STEREO LINK function
- SPL MAX: 108 dB
- Frequency response: 50 Hz - 18 kHz
- Lightweight, compact and ultra-durable PP cabinet
- Padded bag for the 3-pcs column included



MIXER SECTION

MONO inputs	2 x MIC/LINE IN (XLR-F + 1.4" JACK)
STEREO input	1 x LINE IN (MINI-JACK)
Outputs	LINE OUT (XLR-M)
Main EQ	SUB LEVEL (SPEECH-MUSIC-BOOST)
Internal Effect	ECHO-DELAY

MULTIMEDIA SECTION

Player Type	USB / SD / WIRELESS AUDIO player with STEREO LINK
Compatible File Formats	MP3, WAV, WMA, APE, FLAC
Control Interface	LCD display, CONTROL buttons

AMPLIFIER SECTION

Total Peak Power	400 W
Continuous Power	200 W
Amplifier Type	Class D
Power Supply	SMPS
Processing	Analog

LOUDSPEAKER SECTION

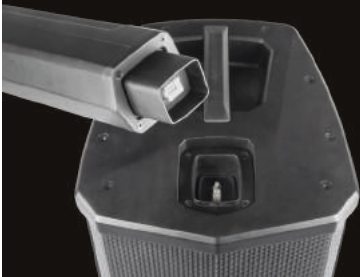
System Type	Compact powered column system with subwoofer
High Frequency Device	4 x 2.5" (66mm) drivers
Low Frequency Device	8" (200mm) woofer with 1.5"VC
Angular Coverage	90° H x 60° V
Frequency Response	50Hz – 18kHz
Maximum SPL Output	108 dB

GENERAL SPECIFICATIONS

Construction	Polypropylene
Cabinet Colour	Black
Column system	3-pcs with fast-linking system and integral power connections
Handles	1 x subwoofer top
Accessories	Padded bag for 3-pcs column
Dimensions (WxHxD)	"SUB: 318x 400 x484.5 mm COLUMN (each piece): 520 X 84 X 97.5 mm"
Weight	14 Kg (complete system)
Power Supply	100 V-240 V ~ 50/60 Hz
Rated Power Consumption	100 W



A padded bag for the 3 pieces column speaker transportation is included.



Fast-coupling system with integrated power signal link



Built-in 3-channel mixer and MEDIA PLAYER with SD/USB and STEREO BLUETOOTH connection



SESSION4

SESSION4 is a **compact portable array system in an active 2.1 configuration**, including two tops and one subwoofer. Designed for solo performers, small live groups, mobile DJ setups or for music and voice playback in corporate and even home applications, the **SESSION4** combines **flexibility, portability** and **performance** with a professional design and a sturdy plywood construction.

Each top includes **four 2.75" neodymium drivers in vertical array configuration**, featuring a **logarithmic arrangement** and a **progressive down tilt**, for increasing the vertical coverage and providing an accurate sound in any part of the listening area. The sub features **two 6.5" woofers in band-pass configuration**, able to provide **very 'punchy' and dynamic basses**, together with an extended low frequency response.

The system is powered by a **3-channel 1200W Class D amplifier** and it's controlled by the **powerful PROEL CORE LT DSP**, able to deliver an outstanding sound definition. The signal processing includes a sophisticated Dynamic EQ and **4 EQ PRESETS (MUSIC, LIVE, DJ, SPEECH)** to adapt the speakers to any kind of application. The **intuitive control interface** features a single knob and a large LCD display, for controlling not only the DSP parameters but also the two MIC/LINE selectable inputs, the system's configuration and the built-in **BLUETOOTH** audio interface.

The **SESSION4** key features are extreme flexibility and portability, which make it one of the most advanced mobile column systems available. Thanks to a **fast linking system with integrated connections**, the two tops can be combined together, forming a longer 8-driver column and allowing the system to be used not only in **STEREO** mode, but also in **MONO** or **DOUBLE** mode. Two **dedicated compartments** in the sub's cabinet allow the tops to be stored and transported in the unit itself, reducing the space requirement for a better mobility in line with the needs of today's musicians.



SESSION4

- 2.1 processed active system with two TOPS and one SUBWOOFER
- TOP**
- Four 2.75" neodymium full-range speakers in Vertical Array configuration
 - Logarithmic arrangement of the speakers with progressive down tilt for an increased vertical coverage
 - Fast-coupling of the two tops with integrated power signal link to obtain a single 8-speaker column

- SUB**
- Two high-excursion 6.5" woofers in BAND PASS configuration
 - Two built-in compartments for hosting the tops, for an easy transport of the whole system

- SYSTEM**
- Plywood cabinet with black ultra-durable polyurethane paint
 - 3-channel Class D SMPS power amplifier, 1200W total peak power
 - Two MIC/LINE (XLR-F) inputs
 - Control & connection panel on the cabinet's top for an easy access
 - High-definition CORE LT DSP with A/D and D/A 24 bit converters and Dynamic EQ
 - User-friendly control interface with single knob and large LCD
 - 4 DSP presets (MUSIC, LIVE, DJ, SPEECH)
 - 3 selectable system's configurations: STEREO, MONO and DOUBLE
 - Bluetooth stereo interface
 - SPL MAX (system): 122 dB peak
 - Frequency response: 45 Hz - 18 kHz

SYSTEM	
System Type	Portable Powered 2.1 System with Two Line Array Tops and One Subwoofer
Maximum SPL Output	122 dB peak system output (pink noise)
Frequency Response (-10dB)	45Hz – 18kHz
SPEAKERS	
LF Driver	2 x 6.5" (165mm) woofer in BANDPASS configuration
HF Driver	8 x 2.75" (70mm) neodymium drivers (4 for each TOP)
Coverage Pattern	100° x 50°
AMPLIFIER	
Type	Class D with SMPS
System Power Rating	300 Watts LF, 2x150 Watts HF Continuous, 1200W Peak
Channels	2 MIC/LINE selectable inputs
Connectors	2 x COMBO (INPUTS), 2 x XLR-M (LINK), 2 x SPEAKON (POWER OUTPUTS)
Controls	1 x LCD with Data Encoder
Processing	24bit / 48kHz CORE DSP - 2-band EQ Selectable CONFIGURATION and EQ PRESETS - Digital Limiting
Wireless Audio	Bluetooth built-in receiver
GENERAL SPECIFICATIONS	
Cabinet Material	Plywood
Finishing	High-strength polyurethane black paint
Grille	Powder coated perforated steel
Handles	2 x sides (SUB)
Pole Socket	1 x top M20 (SUB), 1 x bottom 35mm (TOP)
Included Accessories	M20 / 35mm telescopic pole, 4-wire SPEAKON/SPEAKON cable, 2 x SAT cover
AC input	230 VAC or 120 VAC 50/60 Hz with LINE VOLTAGE selector
Dimensions (W x H x D)	TOP: 100x358x100 mm SUB: 420x480x460 mm
Weight	TOP: 1.5 kg (3.3 lbs) SUB: 22 kg (48.5 lbs) SYSTEM: 25 kg (55.1 lbs)

INCLUDED ACCESSORIES



OPTIONAL ACCESSORIES



Fast-coupling system with integrated power signal link



Logarithmic speaker arrangement with progressive tilt for increased vertical coverage



User-friendly control interface with single knob and large LCD



Two built-in spaces for hosting the tops



SESSION6

SESSION6, the top-of-the-range model of the series, is a **compact high-power portable array system in an active 2.1 configuration**, including two tops and one subwoofer. Designed for **indoor and outdoor use** in live concerts, mobile DJ setups and corporate applications, the SESSION6 combines **flexibility, portability** and **performance** with a professional design and a sturdy plywood construction.

Each top includes **six 3.25" neodymium drivers in vertical array configuration** with **progressive down tilt**, for increasing the vertical coverage. A **custom-designed phase plug** provides an ultra-wide 120° horizontal coverage and guarantees perfect voice intelligibility and accurate sound in any part of the listening area. The sub features **two 10" high-excursion woofers with 2.5" voice coil**, able to provide very 'punchy' and dynamic basses, together with an extended low frequency response and an **impressive SPL**.

The system is powered by a **3-channel 2400W Class D amplifier** and it's controlled by the **powerful PROEL CORE LT DSP**, able to deliver an outstanding sound definition. The signal processing includes a sophisticated Dynamic EQ and **4 EQ PRESETS (MUSIC, LIVE, DJ, SPEECH)** to adapt the speakers to any kind of application. The **intuitive control interface** features a single knob and a large LCD display, for controlling not only the DSP parameters but also the two MIC/LINE selectable inputs, the system's configuration and the built-in **BLUETOOTH** audio interface.

Thanks to the innovative **die-cast fast linking system with integrated connections**, the two tops can be combined together, forming a longer 12-driver column and allowing the system to be used not only in **STEREO** mode, but also in **MONO** or **DOUBLE** mode, for an extreme flexibility.

A **dedicated padded bag** is included for storing and transporting the two columns and the provided pole and speaker cable, for the maximum portability.



SESSION6

- 2.1 processed active system with two TOPS and one SUBWOOFER
- TOP**
- Six 3.25" neodymium full-range speakers in Vertical Array configuration
 - Progressive down tilt for an increased vertical coverage
 - Custom designed phase plug for ultra-wide 120° horizontal coverage
 - Fast-coupling of the two tops with integrated power signal link to obtain a single 12-speaker column

- SUB**
- Two high-excursion 10" woofers with 2.5" voice coil

- SYSTEM**
- Plywood cabinet with black ultra-durable polyurethane paint
 - 3-channel Class D SMPS power amplifier, 2400W total peak power
 - Two MIC/LINE (XLR-F) inputs
 - Control & connection panel on the cabinet's top for an easy access
 - High-definition CORE LT DSP with A/D and D/A 24 bit converters and Dynamic EQ
 - User-friendly control interface with single knob and large LCD
 - 4 DSP presets (MUSIC, LIVE, DJ, SPEECH)
 - 3 selectable system's configurations: STEREO, MONO and DOUBLE
 - Bluetooth stereo interface
 - SPL MAX (system): 128 dB peak
 - Frequency response: 38 Hz - 20 kHz



Die-cast fast-coupling system with integrated power signal link



Progressive tilt and custom phase plug for increased vertical and horizontal coverage



User-friendly control interface with single knob and large LCD



Padded bag for transporting the tops

SYSTEM	
System Type	Portable Powered 2.1 System with Two Line Array Tops and One Subwoofer
Maximum SPL Output	128 dB peak system output (pink noise)
Frequency Response (-10dB)	38Hz – 20kHz
SPEAKERS	
LF Driver	2 x 10" (254mm) woofer in BANDPASS configuration
HF Driver	12 x 3.25" (89mm) neodymium drivers (6 for each TOP)
Coverage Pattern	120° x 60°
AMPLIFIER	
Type	Class D with SMPS
System Power Rating	600 Watts LF, 2x300 Watts HF Continuous, 2400W Peak
Channels	2 MIC/LINE selectable inputs
Connectors	2 x COMBO (INPUTS), 2 x XLR-M (LINK), 2 x SPEAKON (POWER OUTPUTS)
Controls	1 x LCD with Data Encoder
Processing	24bit / 48KHz CORE DSP - 2-band EQ Selectable CONFIGURATION and EQ PRESETS - Digital Limiting
Wireless Audio	Bluetooth built-in receiver
GENERAL SPECIFICATIONS	
Cabinet Material	Plywood
Finishing	High-strength polyurethane black paint
Grille	Powder coated perforated steel
Handles	2 x sides (SUB)
Pole Socket	1 x top M20 (SUB), 1 x bottom 35mm (TOP)
Included Accessories	M20 / 35mm telescopic pole, 4-wire SPEAKON/SPEAKON cable, PADDED BAG for SAT
AC input	230 VAC or 120 VAC 50/60 Hz with LINE VOLTAGE selector
Dimensions (W x H x D)	TOP: 112x616x132 mm SUB: 420x580x490 mm
Weight	TOP: 4.5 kg (9.9lbs) SUB: 26.5 kg (58.4 lbs)

INCLUDED ACCESSORIES



OPTIONAL ACCESSORIES





FREEPASS **SERIES**

FREEPASS6 is a **combo sound system** including a speaker, an amplifier and a 5-input mixer in an **ultra-compact and portable package**.

The **2-way speaker system** includes a **1" neodymium tweeter** and a **6.5" woofer**, able to provide an **extended** and detailed frequency response.

The built-in **amplifier** delivers to the speakers **75W of RMS power**. In addition, it can power an external speaker with another 75W thru the **POWER OUT connector**.

The system includes a **high-quality 5-input mixer** featuring 2-band CHANNEL EQ, 3-band MAIN MIX EQ, MONITOR output and a sophisticated **DIGITAL EFFECT** with 16 presets.

FREEPASS6 is hosted in a compact and rugged MDF cabinet finished with a durable anti-scratch black paint, which provides **maximum portability** and **road-proof operation**. Two M4 threaded inserts on the bottom and on the side of the cabinet allow the **included metal adapter** to be used for installing the system **on a standard speaker stand**, both in vertical and horizontal position.

FREEPASS6 is a **cost-effective, ultra-compact, all-in-one system** for **mobile musicians, vocal P.A.** and **indoor sporting, religious or business events**. The 5 inputs available in the built-in mixer allows a variety of signals to be connected, while the possibility to double the power **connecting a second speaker** allows the system to be used also in outdoor application where a **higher SPL** is required.

FREEPASS6

- All-in-one portable sound system
- 2-way speaker system with 1" neodymium tweeter and 6.5" woofer for an accurate sound reproduction
- 150W peak power - 75W RMS built-in amplifier
- 75W RMS power output for an external speaker
- Built-in 5-input mixer with PHANTOM POWER
- 2 MONO MIC/LINE channels + 1 STEREO LINE channel with 2-band EQ
- MONITOR output
- DIGITAL EFFECT PROCESSOR with 16 presets
- MAIN MIX 3-band EQ
- Compact MDF cabinet with durable black anti-scratch painting and metal grille
- 4 x M4 threaded inserts for applying a speaker stand adapter (included)



MIXER SECTION

MONO inputs	(3) MIC/LINE IN (COMBO)
STEREO inputs	(1) STEREO LINE IN (2xRCA)
Input EQ	HIGH: +/-15dB 10 kHz, LOW: +/- 15dB 100 Hz
PHANTOM power	+ 48 V (CH 1-3)
Internal Effect	ECHO (CH 1-4)
Outputs	16-PRESETS 24bit DIGITAL MULTIEFFECT
Main EQ	MONITOR OUT (1xJACK), REC OUT (2xRCA), SPEAKER OUT (1xJACK)
Metering	3-band EQ (HIGH, MID & LOW)

AMPLIFIER SECTION

Continuous Power	75 W (1 KHz, 1% THD)
Maximum Power	150 W (1 KHz, 1% THD)
Power Output	75 W @ 8 ohm

LOUDSPEAKER SECTION

Loudspeaker System	2-way system vented
High Frequency Device	1" neodymium tweeter
Low Frequency Device	6.5" woofer with 1"VC
Angular Coverage	90° H x 60° V
Impedance	4 ohm
Frequency Response	75 Hz - 20 kHz (-6 dB)
SPL 1W 1m	88 dB
Cabinet Material	MDF with black anti-scratch paint, metal grille
Pole Socket	4xM4 threaded inserts (bottom + side) for optional pole adapter

GENERAL SPECIFICATIONS

Dimensions	20x32x22 cm
Weight	6.2 kg / 13.67 lbs.
Power Supply	230/115 VAC (switchable) 50/60 Hz
Power consumption	180 W



150W built-in amplifier with power output for an additional speaker



Built-in 5-input mixer with DIGITAL EFFECT PROCESSOR



Speaker stand ADAPTER included



FREEPASS **SERIES**

FREEPASS8USB and **FREEPASS10USB** are **all-in-one sound systems** combining in an **ultra-portable, easy-to-use package** everything musicians and other PA users need for playing: a full-featured **mixer**, a versatile **MP3 player**, a powerful **CLASS D amplifier**, two full-range **speakers** and high-quality connection **cables**.

FREEPASS8USB and **FREEPASS10USB** are complete PA systems that, even if compact in size, quick to setup and simple to use, are packed with a **full set of features** and delivers an unexpected **sound quality** for this kind of systems. The **8-channel, 2x250W powered mixer** fits perfectly in one of the two speakers and it can be used as it is or detached with a simple operation. The second speaker includes a convenient and large compartment that can contain all the connection cables and other accessories. Two **high-quality PROEL speaker cables** with ultra-durable 1/4" metal jack connectors are also provided.

The two speakers, hosted in lightweight PP cabinets, feature a **horn-loaded 1.35" VC compression driver** and a **8" or 10" woofer**, able to provide a clean and powerful **full-range sound** with high SPL. A large handle on top of the cabinet and a pole holder on the bottom make transport and installation quick and easy.

Thanks to their versatility and portability, **FREEPASS8USB** and **FREEPASS10USB** can be used in a variety of applications, such as **live gigs** for singers or small bands, **education and sporting events, seminars and presentations**.

FREEPASS8USB

FREEPASS10USB

- All-in-one systems with two speakers and detachable power mixer
- 4 MIC/LINE MONO inputs with phantom power
- 2 LINE STEREO inputs
- 2-band channel EQ
- ECHO / DELAY effect
- MUSIC/SPEECH main EQ
- Built-in MP3 player with USB port
- 7-LED VU-METER
- 2-TRACK and MONITOR out
- Dual 250W CLASS D power amplifier with SMPS
- 2-way speakers with 1" horn-loaded compression driver and 8" or 10" woofer
- 2 x 7.5mt. PROEL power cables with metal ¼" JACK
- Convenient accessory compartment



Detachable powered mixer with 8 inputs and 500W amplifier



Convenient compartment for the system's cables and other accessories

	FREEPASS8USB	FREEPASS10USB
MIXER SECTION		
MONO inputs	(4) MIC IN (XLR-F) + LINE IN (JACK)	
STEREO inputs	(2) LINE IN (2xJACK / 2xRCA)	
Input EQ	HIGH: +/-15dB 10 kHz, LOW: +/- 15dB 100 Hz	
PHANTOM power	+ 15 V (CH 1-4)	
Internal Effect	ECHO (CH 1-4)	
Outputs	MONITOR OUT (2xJACK), SUB OUT (1xJACK), SPEAKER OUT (2xJACK)	
Main EQ	VOICE / MUSIC selector	
Metering	2x6-LED VU-METER	
MULTIMEDIA SECTION		
Player Type	USB	
Compatible File Formats	MP3	
Control Interface	Control buttons	
AMPLIFIER SECTION		
Amplifier Type	Class D with SMPS (Switch Mode Power Supply)	
Maximum Output Power	2 x 250 W @ 4 ohm (1 KHz, 1% THD)	
Frequency Response	MUSIC: 20 Hz - 20 KHz, VOICE: 80 Hz - 20 KHz	
LOUDSPEAKER SECTION		
Loudspeaker System	2-way system vented	
High Frequency Device	1" compression driver 1.35" VC - horn loaded	
Low Frequency Device	8" woofer with 2" VC	10" woofer with 2" VC
Angular Coverage	90° H x 60° V	
Impedance	4 ohm	
Frequency Response	65 Hz - 20 kHz (-10 dB)	
SPL 1W 1m	95 dB	
Cabinet Material	Black polypropylene, metal grille	
Handles	1 top	
Pole Socket	1 bottom	
GENERAL SPECIFICATIONS		
Dimensions	Speaker: 45x27.5x25 cm / Mixer: 32x18x9 cm	Speaker: 50x32x29 cm / Mixer: 32x18x9 cm
Weight	System: 20 kg / Speaker: 8.6 kg / Mixer: 2.4 kg	System: 25 kg / Speaker: 10.6 kg / Mixer: 2.4 kg
Power Supply	230 VAC / 120 VAC (switchable) 50/60 Hz	
Power consumption	400 W	



FREE SERIES

PROEL FREE systems gives you the freedom to perform your music or play your sound anywhere.

FREE8LT is a **battery powered combo sound system** with a full set of features and the sound you don't expect from this kind of product. It features a versatile **MP3 player with USB port, SD slot, BLUETOOTH connection**, a large LCD and remote control. It is hosted in a rugged MDF cabinet with black PVC finishing and an adapter for stand, which includes a built-in **retractable handle and roller wheels**, allowing the system to be taken everywhere.

With his 2-way configuration featuring a high-efficiency 3" tweeter, **FREE8LT** is the perfect combo system for **mobile musicians**, vocal P.A. and a wide range of indoor or outdoor events. It provides maximum portability, quality sound and good coverage in an extremely **versatile and affordable package**. The rechargeable 12V battery provides up to **2-3 hours of mains-free continuous operation**.



FREE8LT

- All-in-one battery powered sound system
- Built-in MEDIA PLAYER with USB port, D slot and BLUETOOTH audio connection, LCD display and IR remote control
- 2 MIC/LINE + 1 STEREO LINE inputs
- HIGH + LOW EQ controls
- Built-in EFFECT
- 20W RMS built-in amplifier
- 3" tweeter and 8" woofer
- 3/4 hours working time
- Compact MDF cabinet with durable PVC coating and ABS + STEEL protection corners.
- Adapter for standard speaker stand
- Two wheels, one retractable handle and one fixed handle for maximum portability

MIXER SECTION	
MONO inputs	1 x MIC IN (COMBO) + 1 x INST/MIC IN (JACK)
STEREO inputs	1 x LINE IN (2xRCA + mini-jack)
Internal Effect	ECHO
Main EQ	2-band EQ (HIGH + LOW)
MULTIMEDIA SECTION	
Player Type	USB / SD / BLUETOOTH player
Compatible File Formats	MP3
Control Interface	LCD display, REMOTE control
AMPLIFIER Section	
Continuous Power	20W RMS
LOUDSPEAKER SECTION	
Loudspeaker System	2-way system
High Frequency Device	3" tweeter
Low Frequency Device	8" woofer
Frequency Response	65Hz - 15KHz, -3dB
Cabinet Material	MDF with black PVC finishing, 2 wheels
Handles	1 top, 1 rear retractable
Pole Socket	1 bottom
GENERAL SPECIFICATIONS	
Dimensions	46.5x51x37.5 cm
Weight	12 kg / 26.45 lbs
Recharge Battery	1 x 12V / 5A
Battery Recharging Time	7-10 hours
Battery Working Time	2-3 hours
Power Supply	230/115 VAC (switchable) 50/60 Hz



Built-in advanced MEDIA PLAYER with USB port, SD slot and BLUETOOTH audio connection



Trolley-style design with roller wheels and retractable dual-tube handle

Alphabetical Index

CODE	PAGE	CODE	PAGE	CODE	PAGE
BAGMQ10FX	6	FLASH8XP	38	LT6P	42
BAGMQ12FX	7	FRE300BK	57-59	LT812A	44
BAGMQ16FX	8	FREE8LT	65	LT8A	42
COVER V10FW	27	FREEPASS10USB	63	LT8P	42
COVER V10FW	29	FREEPASS6	61	MQ10FX	6
COVER V12FW	27	FREEPASS8USB	63	MQ12USB	7
COVER V12FW	29	HPAMP104	12	MQ16USB	8
COVERFL12X	39	HPAMP106	13	MQ6	5
COVERFL8X	39	HPX2400	19	MQ6FX	5
COVERLT812A	44	HPX2800	19	PC260	15
COVERS10	49	HPX4600	19	RACKMQ12USB	7
COVERS12	49	HPX6000	19	RACKMQ16USB	8
COVERS15	49	HPX8000	19	S10A	48
COVERS18	49	HPX900	19	S12A	48
COVERSESSION4	57	KPTFL12X	39	S15A	47
COVERSESSION6	59	KPTFL5	39	S18A	47
COVERV10	25	KPTFL5W	39	SESSION1	55
COVERV12	25	KPTFL8X	39	SESSION4	57
COVERV15	25	KPTLT10	45	SESSION6	59
COVERV8	25	KPTLT10W	45	SNBK	39
COVERWD10V2	53	KPTLT12	45	SNWH	39
COVERWD12V2	53	KPTLT12W	45	U24B	31-35
COVERWD15V2	53	KPTLT6	45	U24H	31-35
CPWD10V2	53	KPTLT6W	45	USB2CAN-D	15
CPWD12V2	53	KPTLT8	45	V10FREE	29
CPWD15V2	53	KPTLT8W	45	V10PLUS	24
DB2A	10	KPTLTTP	39-45	V10WAVE	27
DIRECT100A	12	KPTLTTPW	39-45	V12FREE	29
DIRECT100P	12	KPTV10	25	V12PLUS	25
DIVA12A	34	KPTV12	25	V12WAVE	27
DIVA15A	35	KPTV15	25	V15PLUS	25
DPX1200PFC	17	KPTV8	25	V8PLUS	24
DPX1700PFC	17	LT10A	42	WD10AV2	53
DPX2500PFC	17	LT10P	42	WD12AV2	53
ES01500LU10	57-59	LT12A	43	WD15AV2	53
FLASH12XP	38	LT12P	43	WX10A	51
FLASH5AV2	39	LT15A	43	WX8A	51
FLASH5PV2	39	LT6A	42		

• Tutte le specifiche possono essere variate senza alcuna notifica • Design and specifications subject to change without any notice

• E' vietata la riproduzione fotostatica e fotografica del presente catalogo, o di parti di esso, in mancanza di espressa autorizzazione da parte di Proel S.p.A.
 • The photostatic and photographic reproduction of this catalogue, in whole or in part, is strictly prohibited without the prior written consent of Proel S.p.A



SSCAT21IE

www.proel.com



UK

Proel International Ltd.
London

KOREA

Proel Korea Co. Ltd.
Gyunggi-Do

USA

Proel North America Inc.
Los Angeles

TUNISIE

Proel Tunisia Sarl
Tunisi

PROEL SPA

(Worldwide Headquarters)
Via alla Ruenia, 37/43
64027 Sant'Omero (TE) - ITALY
Tel. +39 0861 81241
Fax +39 0861 887862
P.I. 00778590679
N.Reg.AEE IT 08020000002762

info@proel.com
www.proel.com

