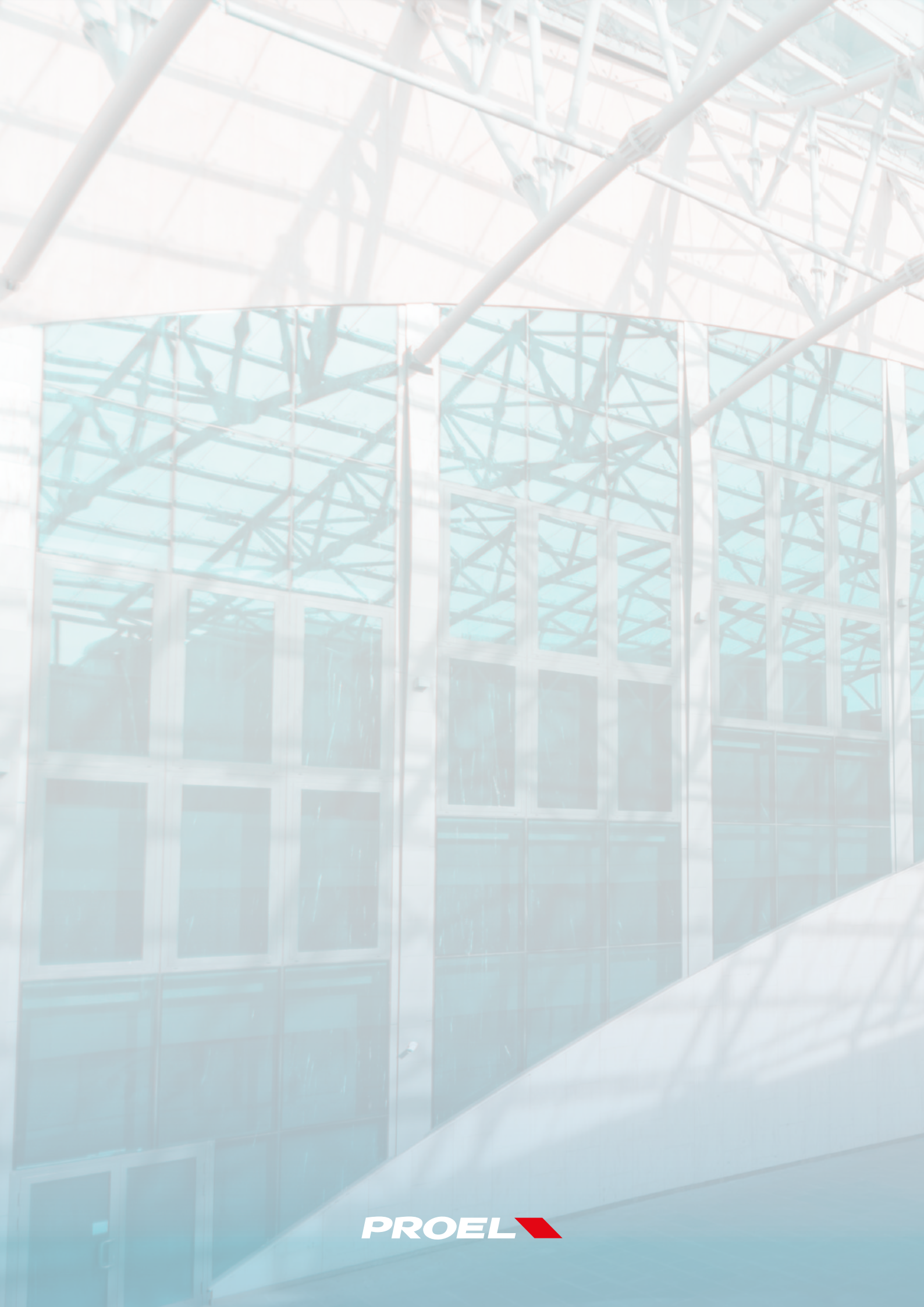




PROEL 
COMMERCIAL
AUDIO



PROEL 

INDEX

EN54 Evacuation systems	5
Speakers for EN54 evac applications	11
Intercom	17
Audio systems	19
Conference systems	23
Portable systems	27
Amplifiers	29
Pre-amplifiers/Mixers and processors	33
Receivers and audio sources	35
Sound speakers	37
LNE Systems	49
Microphones	51
Rack and accessories	55
Volume controls	61
Line transformers	63



PROEL

DBE108E

VAE
VOICE ALARM
EQUIPMENT

LIVE EVAC
EVAC MESSAGE
ALERT MESSAGE

LIVE EVAC	EVAC Msg	ALERT Msg	PHONE	STATUS
AG04-1-1 ZONE1	AG04-1-2 ZONE2	AG04-1-3 ZONE3	AG04-1-4 ZONE4	
AG04-2-1 ZONE5	AG04-2-2 ZONE6	AG04-2-3 ZONE7	AG04-2-4 ZONE8	
AG04-3-1 ZONE9	AG04-3-2 ZONE10	AG04-3-3 ZONE11	AG04-3-4 ZONE12	

1 2 3 4
5 6 7 8

Navigation icons: Home, Back, Forward, Stop, Call, +



EN54 EVACUATION SYSTEMS

EN54 EVACUATION SYSTEMS



AE604

Wall mounted All-In-One voice alarm system compliant with **EN54-16** with testing and charge circuit compliant with **EN54-4**.

4 Zones System on redundant loudspeaker line and back up Amplifier.

Main and backup amplifier in class D "Pure Path"[™].

300W @ 100V on redundant loudspeaker line (A + B). The system does not require a line end resistor.

The system ensures full power performance even with backup power.

Processing circuit by DSP; balanced and isolated background music input, isolated and balanced background music microphone input with selectable 48Vdc phantom power supply and priority activation by contact; monitored input for remote emergency call stations; front panel fitted with monitor loudspeaker, monitored emergency PPT microphone, direct sending message keys, navigation keys, large display with LCD dot matrix. Line output for active sub-woofer; audio messages stored on uSD 16bit 48kHz: 8 general purpose messages with activation from dedicated input. contacts or incorporated scheduler, 8 monitored contacts for emergency announcement activation.

4 12Vdc batteries 18Ah not included.

Main Unit Dimensions (WxHxD): 470x550x235mm

Battery Case Dimensions (WxHxD): 470x220mmx200mm

Certification EN 54-16:2008 0051-CPR-1901



AE300 (order code AE300R1)

Wall mounted All-In-One voice alarm system compliant with **EN54-16** with testing and charge circuit compliant with **EN54-4**.

Main and backup amplifier in class D "Pure Path"[™]

300W @ 100V on redundant loudspeaker line (A + B). The system does not require a line end resistor.

The system ensures full power performance even with backup power.

Processing circuit by DSP; balanced and isolated background music input, isolated microphone input with selectable 48Vdc phantom power supply and priority activation by contact; monitored input for remote emergency call stations; front panel fitted with monitor loudspeaker, monitored emergency PPT microphone, direct sending message keys, navigation keys, large display with LCD dot matrix.

Line output for active sub-woofer; audio messages stored on uSD 16 bit 48kHz: 8 general purpose messages with activation from dedicated input contacts or incorporated scheduler, 2 monitored contacts for emergency announcement activation.

4 12Vdc batteries. 7.2Ah not included

Dimensions (WxHxD): 440x495x155mm

Certification EN 54-16:2008 0051-CPR-0514



PA DBE01

Fully monitored desk call station according to **EN54-16**. Software programmable "Talk" key, "Busy" and "System" LEDs, dynamic gooseneck microphone, automatic compressor, level adjustment trimmer Wiring by Rj45 connector and CAT5 Cable.



PA DBE06

Fully monitored desk call station according to **EN54-16**. Software programmable capacitive selection keys, "Talk" and "Busy" Keys, "System" LEDs, dynamic gooseneck microphone, automatic compressor, level adjustment trimmer Wiring by Rj45 connector and CAT5 Cable. Wiring by Rj45 connector and CAT5 Cable. Power supply from RJ45 cable or 24Vdc local adaptor.



PA DBE108

Fully monitored desk call station according to **EN54-16**. 10 keys dial keyboard, "Talk" and "Clear" key, 3 Evac activation keys, touch screen quarter VGA TFT display, dynamic gooseneck microphone, DSP audio processing. All keys and functions are software programmable. Wiring by Rj45 connector and CAT5 Cable. Power supply from RJ45 cable or 24Vdc local adaptor.



PA DBE108E



Fully monitored Ethernet desk call station according to **EN54-16**. Connects to networkable Proel Evac System. 10 keys dial keyboard, "Talk" and "Clear" key, 3 Evac activation keys, touch screen quarter VGA TFT display, dynamic gooseneck microphone, DSP audio processing. All keys and functions are software programmable. Wiring by Rj45 connector and CAT5 Cable. Power supply from RJ45 cable or 24Vdc local adaptor.



PA DBEVF

Fully monitored, wall-mount, red metal box, **EN54-16** Firemen's call station with handheld PTT Microphone. Fully software programmable, with status LEDs. Access to the security and fire alarm features system is granted by a key-lock. "EVAC" and "ALARM" Remote Message Activation Button. Wiring by Rj45 connector and CAT5 Cable. Power supply from RJ45 cable or 24Vdc local adaptor.

EN54 EVACUATION SYSTEMS



PA EV PROM5Z

Digital Master matrix certified **EN 54-16**
 Up to 5 slots for direct plug-in modules for the Amplifier/line control.
 Up to 108 zones (54 with dual-line architecture for zone A/B)
 LCD display with navigation knobs for the complete unit control
 Led Power, Fault Warning and Voice Alarm
 Front USB socket for PC interface purposes
 24 Vdc power supply input
 Spare amplifier input
 Two RJ45 connectors for the Slave matrix connecting purposes
 Two RJ45 connectors for the microphone units connecting (up to 108 microphone units)
 Two contact activation messages and in/out programmable connectors
 Common fault out
 2 rack unit 19" Standard
 Certification EN54-16:2008 0068-CPR-014

PA EV PROS8Z

EN54-16 certified slave matrix
 Up to 8 directly insertable modules for amplifier/line control
 Power LED
 Fault Warning and Voice Alarm
 24Vdc power supply input
 Backup amplifier input
 Four RJ45 connectors for connection to the Master matrix and subsequent Slave matrix
 2 standard 19" rack units
 Certification EN54-16:2008 0068-CPR-014



PA EV MCL1Z

Zone module for amplifier/line control to be inserted in the Master EV PROM5Z or Slave EV PROS8Z matrix

PA EV MCL2Z

Zone module for the control of the second line in the same zone amplifier, to be inserted in the Master EV PROM5Z or Slave EV PROS8Z matrix

PA AELAB

Zone controller managing the amplifier and the redundant loudspeaker lines (A+B) performing continuous monitoring. The module fits into the AEM5Z Master matrix or AES8Z Slave matrix.



PA 48VDCER1



Back-up power supply control system.
 Provides the back-up power supply to maintain the system in operation when there is no mains power supply.
 48V input for external back-up batteries (not provided). Battery capacity 270 Ah- (Max total output 200A).
 The built-in charger controls the power supply circuit when the AC supply operates correctly. In case of no mains power supply, all system devices will be automatically powered by the 48VDC batteries. The system controls the power supply circuit both for the mains power supply and for battery operation by communicating the power supply status and any faults to the unit.
EN54-4 certified system 230V/50Hz power supply



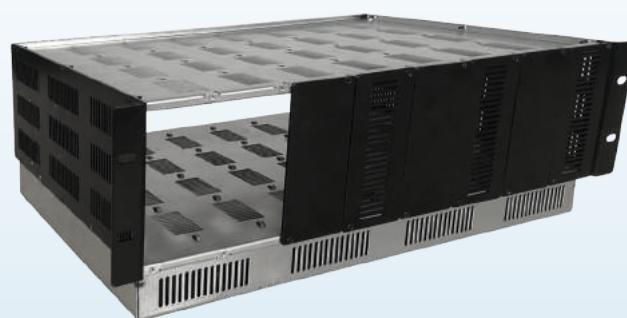
PA MDAC8

8 units rack case (3U rack 19") for MDA series



PA DM250/550/750

Modular Professional Power Unit: 70/100V: DM250 250W – DM550 550W – DM750 750W
 Speaker short-circuit and overload protection circuit
 Multi-Level Protection and Self Fault Recovery
 Energy Saving Circuit
 On Board DSP
 LED indicators
 Master Level control
 Low and high tone adjustment
 PA-HF Filter with rear switch
 VOX threshold adjustment
 MIC/Line input gain adjustment
 Balanced Line Input on Euroblock terminal
 Priority Mic/Line Balanced Input on RJ45 socket
 Two selectable outputs at Constant voltage (70/100V) on Euroblock terminal
 48Vdc emergency power supply
 Dimensions (WxHxD): 116x53x367mm
 Weight: 2.15Kg
 Maximum 8 modules in a rack case MDA8C (3U rack 19")



PA MDACTV

8 units rack ventilated case (3U rack 19") for MDA/DMPower series





SPEAKERS FOR EN54 EVAC APPLICATIONS

SPEAKERS FOR EN54 EVAC APPLICATIONS

ARTIA SERIES



PA A51TB - PA A51TW

System type: Wall Mount Speaker
Drivers: 1" tweeter, 5" woofer
Power Rating @ 8Ω (nominal): 50 W
Rated Noise Power 100h: 50 W
Power Rating @ 100V: 50 / 25 / 12.5 / 6.25 W
Power Rating @ 70V: 50 / 25 / 12.5 / 6.25 / 3.12 W
Impedance: 8 Ω (nominal)
200 / 400 / 800 / 1.6K Ω @ 100V
100 / 200 / 400 / 800 / 1.6K Ω @ 70V
Connector: Ceramic Terminal Block
Power Selection: Rotary Switch
Frequency Response: (-10 dB) 90 - 20k Hz
Sensitivity at 1W (1 kHz, 1m / 4m): 89 / 77 dB
Max SPL (1 kHz, 1m / 4m): 106 / 94 dB
Coverage Angle at 500 / 1k / 2k / 4k Hz(-6dB): 180° / 180° / 180° / 120°
Cabinet: Black (RAL 9011)/White (RAL 9016)
Material: ABS / Aluminium
Environmental Type: B (IP55C)
Operating Temperature: -25 ÷ +70 °C (-13 ÷ +158 °F)
Relative Humidity: < 95%
Dimensions (mm): 170 x 245 x 175 (W x H x D)
Mounting: on wall using supplied bracket
Weight (Kg): 2.3
Standard Compliance: **EN54-24:2008**

PA A51TB: Black Color
PA A51TW: White Color



PA A31TB - PA A31TW

System type: Wall Mount Speaker
Drivers: 1" tweeter, 3" woofer
Power Rating @ 8Ω (nominal): 25W
Rated Noise Power 100h: 25 W
Power Rating @ 100V: 25 / 12.5 / 6.25 / 3.12 W
Power Rating @ 70V: 25 / 12.5 / 6.25 / 3.12 / 1.56 W
Impedance: 8 Ω (nominal)
400 / 800 / 1.6K / 3.2K Ω @ 100V
200 / 400 / 800 / 1.6K / 3.2K Ω @ 70V
Connector: Ceramic Terminal Block
Power Selection: Rotary Switch
Frequency Response: (-10 dB) 120 - 20k Hz
Sensitivity at 1W (1 kHz, 1m / 4m): 87 / 75 dB
Max SPL (1 kHz, 1m / 4m): 101 / 89 dB
Coverage Angle at 500 / 1k / 2k / 4k Hz(-6dB): 180° / 120° / 120° / 90°
Cabinet: Black (RAL 9011)/White (RAL 9016)
Material: ABS / Aluminium
Environmental Type: B (IP55C)
Operating Temperature: -25 ÷ +70 °C (-13 ÷ +158 °F)
Relative Humidity: < 95%
Dimensions (mm): 140 x 209 x 125 (W x H x D)
Mounting: on wall using supplied bracket
Weight (Kg): 1.74
Standard Compliance: **EN54-24:2008**

PA A31TB: Black Color
PA A31TW: White Color

ARTIA SERIES



PA AP50T

System type: Sound Projector
Drivers: 5" dual cone full range
Rated Noise Power 100h: 20 W
Power Rating @ 100V: 20 / 10 / 5 W
Power Rating @ 70V: 10 / 5 / 2.5 W
Impedance: 500 / 1K / 2K Ω @ 100V
500 / 1K / 2K Ω @ 70V
Connector: Ceramic Terminal Block
Power Selection: On terminal block
Frequency Response: (-10 dB) 100 - 12k Hz
Sensitivity at 1W (1 kHz, 1m / 4m): 90 / 78 dB
Max SPL (1 kHz, 1m / 4m): 103 / 91 dB
Coverage Angle at 500 / 1k / 2k / 4k Hz(-6dB): 180° / 120° / 80° / 60°
Cabinet: White (RAL 9016)
Material: Aluminium
Environmental Type: B (IP55C)
Operating Temperature: -25 ÷ +70 °C (-13 ÷ +158 °F)
Relative Humidity: < 95%
Dimensions (mm): 140 x 140 x 195 (W x H x D)
Mounting: Brick/concrete on ceilings/wall
Weight (Kg): 2.63
Standard Compliance: **EN54-24:2008**



PA AP52T

System type: Bi-Directional Sound Projector
Drivers: 2x 5" full range
Rated Noise Power 100h: 20 W
Power Rating @ 100V: 20 / 10 / 5 W
Power Rating @ 70V: 10 / 5 / 2.5 W
Impedance: 500 / 1K / 2K Ω @ 100V
500 / 1K / 2K Ω @ 70V
Connector: Ceramic Terminal Block
Power Selection: On terminal block
Frequency Response: (-10 dB) 120 - 12k Hz
Sensitivity at 1W (1 kHz, 1m / 4m): 88 / 76 dB
Max SPL (1 kHz, 1m / 4m): 101 / 89 dB
Coverage Angle at 500 / 1k / 2k / 4k Hz(-6dB): (2x) 180° / 120° / 80° / 60°
Cabinet: White (RAL 9016)
Material: Aluminium
Environmental Type: B (IP55C)
Operating Temperature: -25 ÷ +70 °C (-13 ÷ +158 °F)
Relative Humidity: < 95%
Dimensions (mm): 140 x 185 x 200 (W x H x D)
Mounting: Brick/concrete on ceilings/wall
Weight (kg): 3.45
Standard Compliance: **EN54-24:2008**

SPEAKERS FOR EN54 EVAC APPLICATIONS

ARTIA SERIES



PA AH50T

System type: Hanging Speaker
Drivers: 5" dual cone full range
Rated Noise Power 100h: 20 W
Power Rating @ 100V: 20 / 10 / 5 W
Power Rating @ 70V: 10 / 5 / 2.5 W
Impedance: 500 / 1K / 2K Ω @ 100V
500 / 1K / 2K Ω @ 70V
Connector: Ceramic Terminal Block
Power Selection: On terminal block
Frequency Response: (-10 dB) 100 - 12k Hz
Sensitivity at 1W (1 kHz, 1m / 4m): 90 / 78 dB
Max SPL (1 kHz, 1m / 4m): 103 / 91 dB
Coverage Angle at 500 / 1k / 2k / 4k Hz(-6dB): 180° / 120° / 80° / 60°
Cabinet: White (RAL 9016)
Material: Aluminium
Environmental Type: B (IP55C)
Operating Temperature: -25 \div +70 °C (-13 \div +158 °F)
Relative Humidity: < 95%
Dimensions (mm): 140 x 140 x 195 (W x H x D)
Mounting: Suspended from ceilings
Weight (kg): 2.77
Standard Compliance: **EN54-24:2008**



PA AIW50T

System type: In-Wall Speaker
Drivers: 1" tweeter - 5" woofer
Rated Noise Power 100h: 12 W
Power Rating @ 100V: 12 / 6 / 3 W
Power Rating @ 70V: 6 / 3 / 1.5 W
Impedance: 850 / 1.7K / 3.4K Ω @ 100V
850 / 1.7K / 3.4K Ω @ 70V
Connector: Ceramic Terminal Block
Power Selection: On terminal block
Frequency Response: (-10 dB) 120 - 20k Hz (on wall)
Sensitivity at 1W (1 kHz, 1m / 4m): 89 / 77 dB
Max SPL (1 kHz, 1m / 4m): 100 / 88 dB
Coverage Angle at 500 / 1k / 2k / 4k Hz(-6dB): 130° / 130° / 120° / 90°
Cabinet: White (RAL 9016)
Material: ABS / Aluminium
Environmental Type: A (IP21C)
Operating Temperature: -10 \div +55 °C (+14 \div +131 °F)
Relative Humidity: < 95%
Dimensions (mm): 280 x 192 x 77 (W x H x D)
Mounting: In-wall or on surface with AIW50FRAME
Weight (kg): 1.62
Standard Compliance: **EN54-24:2008**



PA AIW50FRAME

This optional accessory allows to install the AIW50T on the surface of concrete or brick walls.

ARTIA SERIES



PA AC61T

System type: Ceiling Speaker
Drivers: 1" tweeter - 6" woofer
Rated Noise Power 100h: 12 W
Power Rating @ 100V: 12 / 6 / 3 W
Power Rating @ 70V: 6 / 3 / 1.5 W
Impedance: 850 / 1.7K / 3.4K Ω @ 100V
850 / 1.7K / 3.4K Ω @ 70V
Connector: Ceramic Terminal Block
Power Selection: On terminal block
Frequency Response: (-10 dB) 200 - 20k Hz (on wall)
Sensitivity at 1W (1 kHz, 1m / 4m): 95 / 83 dB
Max SPL (1 kHz, 1m / 4m): 105 / 93 dB
Coverage Angle at 500 / 1k / 2k / 4k Hz(-6dB): 120° / 120° / 90° / 60°
Cabinet: White (RAL 9016)
Material: ABS / Aluminium
Environmental Type: A (IP42C)
Operating Temperature: -10 ÷ +55 °C (+14 ÷ +131 °F)
Relative Humidity: < 95%
Dimensions (mm): 186 x 114 (\varnothing x D)
Mounting: \varnothing 166mm cut out
Weight (kg): 1.07
Standard Compliance: **EN54-24:2008**



PA AC60T

System type: Ceiling Speaker
Drivers: 6" dual cone full range
Rated Noise Power 100h: 12 W
Power Rating @ 100V: 12 / 6 / 3 W
Power Rating @ 70V: 6 / 3 / 1.5 W
Impedance: 850 / 1.7K / 3.4K Ω @ 100V
850 / 1.7K / 3.4K Ω @ 70V
Connector: Ceramic Terminal Block
Power Selection: On terminal block
Frequency Response: (-10 dB) 120 - 20k Hz (on wall)
Sensitivity at 1W (1 kHz, 1m / 4m): 94 / 82 dB
Max SPL (1 kHz, 1m / 4m): 104 / 92 dB
Coverage Angle at 500 / 1k / 2k / 4k Hz(-6dB): 120° / 120° / 90° / 45°
Cabinet: White (RAL 9016)
Material: ABS / Aluminium
Environmental Type: A (IP21C)
Operating Temperature: -10 ÷ +55 °C (+14 ÷ +131 °F)
Relative Humidity: < 95%
Dimensions (mm): 186 x 74 (\varnothing x D)
Mounting: \varnothing 166mm cut out
Weight (kg): 0.81
Standard Compliance: **EN54-24:2008**

SPEAKERS FOR EN54 EVAC APPLICATIONS



PA CS-6HT60BS



System Type: Horn Speaker
LF Speaker: 6.5" Waterproof PP Woofer
HF Speaker 1" Compression Driver
Rated Noise Power 100h @ 100V: 60 W
Rated Noise Power 100h @ 70V: 30 W
Power rating @ 100V: 60 / 30 / 15 / 7.5 W
Power rating @ 70V: 30 / 15 / 7.5 / 3.75 W
Impedance: 167 / 333 / 666 / 1.33k Ω
Connector: Ceramic Terminal block
Power selection: On Transformer Terminals
Measure Environment: Free Field
Frequency Response (-10 dB): 200 - 20k Hz
Sensitivity at 1W (1 kHz, 1m / 4m): 102 / 100 dB
Sensitivity at 1W (Pink Noise 6dB Crest Factor, 1m / 4m): 99 / 87 dB
Max SPL (Pink Noise 6dB Crest Factor, 1m / 4m): 114 / 102 dB
Horizontal Coverage Angle at 500 / 1k / 2k / 4k Hz (-6dB): 105° / 50° / 80° / 80°
Vertical Coverage Angle at 500 / 1k / 2k / 4k Hz (-6dB): 140° / 70° / 90° / 150°
Cabinet: White (RAL 9016)
Material: ABS
Environmental Type: B
Protection Degree: IP66
Operating Temperature: -25 ÷ +55 °C (-13 ÷ +131 °F)
Relative humidity: <95%
Dimensions (mm): 418 x 332 x 391 (W x H x D)
Mounting: on wall using supplied bracket
Weight :7.4 kg (16.3 lb)
Standard Compliance: **EN54-24:2008**



PA PHS-81T30BS

Type: Outdoor / indoor horn speaker
Drivers: Horn speaker
Power rating @ 100 V: 30 W – 15 W – 7.5 W – 3.75 W
Power rating @ 70 V: 15 W – 7.5 W – 3.75 W – 1.87
Impedance (Ohm) : 333 Ohm – 667 Ohm – 1333 Ohm – 2667 Ohm
Terminal block: Ceramic
Power selection device: Power taps on transformer
Frequency response: 340 Hz – 9 kHz
Sensitivity: 108 dB (at 1 W / 1 m)
Max SPL (sound pressure level): 123 dB (at 30 W / 1 m)
Dispersion 1 kHz / 4 kHz: Conical 60°
Cabinet :Light Grey (RAL 7035)
Material: ABS complying Anti-Fire UL 94V0
Environmental: type B
Type of application: E
Mounting Yoke bracket
Dimension \varnothing x D: 212 x 280 mm (8.35" x 11.02")
Weight: 2.1 kg
IP rating: (I E C 60529) IP 66
Standard Compliance: **EN54-24:2008**



INTERCOMS

INTERCOMS



INCOM2



Intercom System for glass counter

Inputs: 2 x MIC

Output: 1x LINE, 1x REC, 1x SPEAKER

Speakers: 2 x 1.5" 4 ohm 3W

Controls: 1 external speakers level – 1 internal speakers level

1 external mic gain – 1 internal mic gain

Frequency Response 300Hz – 10kHz (-3dB)

Power Supply: 12 Vdc 500 mA by Adapter Power Supply 100-240

V~ 50/60 Hz (supplied)

Dimensions (W x H x D): Main base: 110 x 41 x 135 mm

Mic Gooseneck: Ø 13 x 365 mm External unit: Ø 171 x 18 mm

Construction: ABS - Aluminium

Weight: 0.7 Kg (complete system)



AUDIO SYSTEMS

AUDIO SYSTEMS



PA MATRIX88

- 8 Inputs 8 Outputs audio matrix
- 8 music inputs (4 lines and 4 Mic/line) freely selectable in each of the 8 outputs
- One local balanced input with gain control for each zone
- One main microphone with selectable priority
- 8 Alarm contacts
- One EM IN input for an external message generator with selectable priority function
- 8 RJ45 ports for CAT5 connection of 8 remote controls (one for each zone)
- 2 RJ45 ports for CAT5 connection of 2 paging consoles
- Separate level controls for each zone
- Display for viewing the selected input channel on each zone
- Internal speaker for zone listening
- 230/117V~ 50/60Hz power supply
- 24Vdc Emergency power supply
- RS485 Communication
- Up to 4 matrixes that can be connected in cascade (32-zone system)
- 19" standard 3U rack



PA R88

Remote Control Panel for MATRIX88
Allows for local volume adjustment and the selection of the sound source to be listened to.
CAT5 connection to the MATRIX88 station.
Provide local 24Vdc power supply for distances greater than 50 metres from the station.
Wall recessed box included.
Frequency response: 50Hz-18kHz
Power consumption: 400mA
Weight: 0.73Kg
Dimensions (WxHxD): 86x86x33mm



PA R88L

Remote Control Panel for MATRIX88 with Integrated mixer.
Allows the local volume adjustment, selection of the sound source to listen to and local sound source input. It also allows you to insert a line input and a microphone input, both provided with level control, in the audio zone which it is assigned to.
CAT5 connection to MATRIX88 station.
Provide local 24Vdc power supply for distances greater than 50 metres from the station. Separate recessed box included.
MIC Input Sensitivity: 10mV
Aux Input Sensitivity: 335mV
Aux Output: 775mV
Frequency response: 50Hz-18kHz
Power consumption: 400mA
Weight: 0.153Kg
Dimensions (WxHxD): 86x146x33mm



PA LOC02

Remote wall panel, fitted with two XLR microphone inputs, which works in conjunction with the MATRIX88 central unit. It allows the two connected microphones to operate in the audio zone which the remote control is assigned to. You can silence the music programme coming from the central unit (MATRIX88) with the MUTE key and allow the playback of only the signal coming from the two microphone inputs. For each microphone input, the panel allows for the separate adjustment of volumes and tone levels. The connection between the panel and matrix is made using a UTP CAT5 cable, which is also used to power the panel by means of the matrix up to a distance of 50 metres; greater distances may require local additional power supply (+24Vdc). LOC02 has a dedicated recessed wall metal box.
MIC Input Sensitivity: 10mV
Frequency response: 50Hz-18kHz
Signal-to-Noise Ratio: MIC ≥ 65 dB - BGM ≥ 75 dB
Power consumption: 400mA
Weight: 0.161Kg
Dimensions (WxHxD): 86x146x33mm



PA RBOX1

Metal box for wall mounting R88 module



PA RBOX2

Metal box for wall mounting R88L and LOC2 modules



PA BM8X8

Digital Microphone Base for MATRIX88 announcements
SPL (1W/m): 4mV/Pa
Frequency response: 150Hz-8kHz
Power Supply: 24Vdc
300 mm cardioid gooseneck
Output connector: RJ45
Dimensions (WxHxD): 232x61x131mm
Weight: 0.95 kg



PA EXBM8X8

Expansion unit for BM8X8 paging console. If you wish to expand a system to 16-24-32 zones, the BM8X8 call console must be fitted with 16-24-32 zone selection buttons for the paging operations. Note: The BM8X8 can be connected with a maximum of 3 EXBM8X8 modules, in cascade.

AUDIO SYSTEMS



PA ZONE8

8-Zone Voice/Music management system
5 switched music inputs (Tape-CD-Tuner-AUX1-AUX2)
Total level control of the call stations
Music signal level control.
ON/OFF controls to activate music on the zones
LED light of zone occupied by the microphone call
Priority input for emergency alert microphone.
Command to activate two-tone siren according to DIN33404
Line output for possible total recording of events.
6 RJ45 inputs for CAT5 connection of the microphone stations
(max 18 micro bases).
Audio output on the 8 zones presettable at 100V or 0dB
depending on the configuration used.
24Vdc bypass command available for each zone for local volume
attenuators.
3 audio inputs with automatic activation (VOX) respectively for:
automatic/additional free input telephone calls/messages.
230 V~ - 24Vdc power supply for emergency.
ZONE8 uses 3 operating configurations:

- A With unique amplifier - Call in the relevant zone/Music present in the zones only with system in stand-by.
- B With two amplifiers - Call in the relevant zone/Music always present even in the zones not concerned by the call.
- C With eight or more amplifiers - Call in the relevant zone/Music always present in the zones not concerned by the call. Large installation system.



PA BM01

Digital Microphone Base for general announcements
Makes the microphone call only in general mode. ALL key to engage the zones in general mode, TALK key to make the speakerphone announcements with the relative activation LED lights.



PA BM04

Digital Microphone Base for 4-zone announcements
Makes the microphone call on the individual zones or in general mode. ALL key to engage the zones in general mode, TALK key to make the speakerphone announcements with relative activation LED lights. Additional four/eight/sixteen keys to select the microphone call on as many zones. The zone activation is highlighted by its LED.



CONFERENCE SYSTEMS

CONFERENCE SYSTEMS



PA DWSKIT

Wireless Discussion system composed of DWS receiving unit with four BMW wireless bases and battery charger.

Dual Display

Navigation keys

Level control of each individual microphone base

Infrared technology for setting the operating frequency

Mixed balanced and unbalanced output

Individual outputs for each channel

Channelled frequency mode or Tuning

Separate Squelch control for each individual Band

Wireless console with display and light ring to indicate the operational condition

Capacity: 50/60m

Metal case with 1 standard 19" rack unit

Two frequency ranges available: a: 610÷670 MHz



PA CONF D

Conference and discussion system made in digital technology in compliance with IEC914 and ISO Standards.

Power supply and direct control of 64 microphone units

President base with priority

Three modes of operation of interventions: FREE MODE, LIMIT MODE and FIFO MODE

One MICRO and one LINE Input for external units

TAPE outputs for recording and LINE for room amplification (balanced and unbalanced)

Possibility of inserting an audio processor in the chain

Microphone SPL (1W/m) level control

Unit monitor loudspeaker level control



PA BMCD

President microphone unit with "SPEAK" key, "PRIORITY" key and LED light of electret condenser microphone activated functions mounted on flexible stem with light ring, built-in monitoring loudspeaker with volume control, headphone jack. 2m Long Y-connector cable provided.

Base Dimensions (WxHxD): 235x54x110mm

Gooseneck length: 390mm

Weight: 1.15 kg



PA BMDD

Delegate microphone unit with "SPEAK" key and LED light of electret condenser microphone activated functions mounted on flexible stem with light ring, built-in monitoring loudspeaker with volume control, headphone jack. 2m Long Y-connector cable provided.

Base Dimensions (WxHxD): 235x54x110mm

Gooseneck length: 390mm

Weight: 1.15 kg



PA EXCONF

Expansion unit for CONF system. Each expansion unit can be connected with a maximum of 60 bases spread over 6 lines (never exceed 30 units per line). Using four expansion units, the system can control up to a maximum of 254.



PA CVMF13

MALE-FEMALE 13 m 8-Pin extension cable



PA CVMF6

MALE-FEMALE 6 m 8-Pin extension cable



PA CVMF3

MALE-FEMALE 3 m 8-Pin extension cable



PA CVMM3

MALE-MALE 3 m 8-Pin extension cable





PORTABLE SYSTEMS

PORTABLE SYSTEMS



PA MEG30



Hand grip megaphone / ABS shoulder strap
Controls: Talk button, Volume, Siren/Alarm
Output: Power 30 W
Power Supply: 8 x 1.5V alkaline type C size batteries
External Power Supply: DC 12 V – 2 A
Battery Life: Approx. 15 hours
Audible Range: 0.8 – 2 km (depending on operating conditions)
Construction: ABS
Dimensions: Ø 230 x L 350 mm
Weight: 1.65 Kg (batteries not included)



AMPLIFIERS

AMPLIFIERS



PA AMP35E

Compact amplifier: 35W, 4/Ω-70/100V
Speakers overload and short-circuit protection circuit • Led start-up indicator
Main level control (Master)
Separated Level Controls for 1÷2 and AUX inputs
Bass and Treble tone adjustment
2 MIC / MIC Phantom 48V / LINE inputs balanced on Euroblock terminals
1 AUX Line RCA Input • MIC 1 Input with priority function
4 outputs, two at constant impedance (8/4Ω) and two at constant voltage (70/100V)
Power Supply 100-120V~ 50/60Hz (select 115V) or 220-240V~ 50/60Hz (select 230V)
Weight 4.3 Kg



PA AMP60E

Compact amplifier: 60W, 4/Ω-70/100V
Speakers overload and short-circuit protection circuit • Led start-up indicator
Main level control (Master)
Separated Level Controls for 1÷2 and AUX inputs
Bass and Treble tone adjustment
2 MIC / MIC Phantom 48V / LINE inputs balanced on Euroblock terminals
1 AUX Line RCA Input • MIC 1 Input with priority function
4 outputs, two at constant impedance (8/4Ω) and two at constant voltage (70/100V)
Power Supply 100-120V~ 50/60Hz (select 115V) or 220-240V~ 50/60Hz (select 230V)
Weight 5.3 Kg



PA AMP160XL

Professional mixer amplifier 160W - 70/100V- 4Ω
Speaker short-circuit and overload protection circuit
LED power indicator
LED level indicator
Master volume control
Separate level controls for inputs 1÷5
Low and high tone adjustment
Lit knobs
4 MIC/MIC Phantom 24/LINE balanced inputs on Euroblock terminal
3 AUX switchable inputs from front selector
1÷4 Inputs with VOX priority function / Contact on other inputs (selectable by dip-switch)
MAIN - IN/OUT function
3 outputs, one of which at constant 4Ω impedance and two at constant voltage (70/100V)
Independent CHIME function for each input (routing)
REC OUT output on RCA
Balanced line level output on Euroblock terminal
230/117V~ 50/60Hz autoswitch power supply
Fins to fasten to a provided 1U 19" rack
Dimensions (WxHxD): 439x44x300 mm
483x44x300 mm - 1U 19" rack



PA AMP03VR

Compact amplifier 30W, outputs 4/8/16Ω - 100V
MP3 file recorder/player module
Two MIC inputs
One PHONO/AUX input switchable by selector
LED power indicator
Master volume control
Separate MIC1 and MIC2 microphone volume controls
AUX volume control
Low and high tone adjustment
Screw for earth connection
Four outputs, three of which at constant voltage (100V/70V/25V) and one at constant impedance (4W)
MIC1 input priority function
Optional vehicle kit with amplifier fixing bracket and fused power cable
Power supply: 230/117V~ 50-60Hz, 12Vdc
Weight: 4.5 Kg



PA AMP240V4

Four-zone mixer amplifier for 240W overall power.
 Four output zones at 100V selectable independently through a front keyboard
 Constant impedance outputs (4W) and constant voltage outputs (25, 70, 100V)
 Four MIC/LINE inputs with combo XLR/Jack 6.3mm
 24V Phantom power supply on 4 MIC inputs
 MIC1 input with vocal activation priority function - VOX
 One PRE-OUT output
 One AMP-IN input
 One RCA input
 One LINE OUT output
 Output level indication LED range
 Hold On and Monitor Outputs
 LED peak signal indicator
 Input LED signal presence indicator for telephone station call
 Low and high tone adjustment Master output volume control
 Volume control for each zone
 Five independent controls for input signals (INPUT 1÷INPUT 5)
 Screw for earth connection
 Rear power supply selector 230/117V~
 Power supply: 230/117V~ 50-60 Hz 24Vdc
 Fins to fasten to a provided 19" 2U rack
 Dimensions (WxHxD): 420x 88x340mm
 483x88x340mm - 19" 2U rack
 Weight: 11.8 kg

PA ATMP240ZXL

4 Zone 240W Amplifier Mixer with Media Player
 Zone paging function through dedicated PA RM4 microphone base (optional)
 Overload and short circuit protection for each speaker outputs
 LED power indicator
 LED audio level indicator
 Master level control
 Separated Level Controls for 1÷4 zones and AUX inputs
 Bass and Treble tone adjustment
 Media Player equipped with remote control with FM radio tuner, MP3 player on SD / USB support and Bluetooth connection
 N° 4 MIC / MIC Phantom 48V / LINE inputs balanced on Euroblock terminals.
 N° 3 AUX inputs switchable by front selector
 Inputs 1 ÷ 4 with independent priority function (VOX / Contact) on the other inputs selectable by dipswitch 1 ÷ 4
 MAIN - IN/OUT Function
 Main power output 4Ω / 70 / 100V on Euroblock terminal
 N° 4 zone outputs at 100V on Euroblock terminal
 N° 4 balanced line level zone outputs on Euroblock terminal
 Independent CHIME function for each input (routing)
 REC OUT on RCA
 230/115V~ 50 / 60 Hz power supply via voltage selector
 19" 2U rack adapters included
 Weight: 13.9Kg
 Dimensions (WxHxD): 433x89x352mm
 483x89x352mm – 2U rack 19"



PA RM4

Paging Base for announcement on 4 zones, designed to be used with the ATMP240ZXL amplifier. It can make a microphone call on single zones, on a group of zones or on all zones.
 ALL key for selecting all zones at the same time
 Zone keys for selecting each single zone or groups of zones
 TALK key for making the announcement
 LED indicators
 CHIME key to activate / deactivate the attention tone

AMPLIFIERS



PA AUP160D

Professional power unit 160W - 70/100V- 4Ω
Speaker short-circuit and overload protection circuit
LED power indicator
LED level indicator
Master volume control
Low and high tone adjustment
Lit knobs
Balanced LINE input on Euroblock terminal
Balanced LINE output on Euroblock terminal
3 outputs, one of which at constant 4Ω impedance and two at constant voltage (70/100V)
230/117V~ 50/60Hz autoswitch power supply
Fins to fasten to a provided 1U 19" rack
Dimensions (WxHxD): 439x44x300mm
483x44x300mm - 1U 19" rack



PA AUP240R

Professional power unit, 240W, 8Ω and 50/70/100V outputs
Inputs for one or more BM101 pre-amplified microphone bases with VOX priority function
Additional priority contact command
Connectors for Line signal input
Input for telephone station call
Low and High tone control
Master control
Constant impedance (8Ω) and constant voltage (50/70/100V) outputs
Additional outputs 100V and 24Vdc present only with Paging function
PA-HF filter inserted at the rear
Ground-lift rear selector
230/117Vca 50/60Hz power supply selector
24Vdc emergency power supply
Dimensions (WxHxD): 483x88x300mm - 19" 2U rack
Weight: 13 kg



PA AUP4125S

4-channel power unit without transformers
Power 4x125W. 4/8Ω 70/100V Outputs
4 constant impedance outputs (4Ω)
4 constant voltage outputs (70/100V) made electronically without the use of output transformers
One balanced input for each channel
One priority balanced input with independent level control for each channel
Independent master control for each channel.
Low and High tone control independent over the 4 channels
Rear insertion independent PA-HF filter for each channel
LED protection indicator
LED signal presence indicator
LED operating mode indicator (4 Ω/70V/100V)
Switching power supply in SMPS technology (switch mode power supply)
Fins to fasten to a provided 19" 2U rack
Power Consumption: 1000VA
Power supply: 230V~ / 117V~ 50-60Hz
Dimensions (WxHxD): 434 x 88.5x425mm – 19" 2U rack
Weight: 9.75 kg



PA AUP4250S

4-channel power unit without transformers.
Power 4x250W. 4/8Ω 70/100V Outputs
4 constant impedance outputs (4Ω)
4 constant voltage outputs (70/100V) made electronically without the use of output transformers
One balanced input for each channel
One priority balanced input with independent level control for each channel
Independent master control for each channel.
Low and High tone control independent over the 4 channels
Rear insertion independent PA-HF filter for each channel
LED protection indicator
LED signal presence indicator
LED operating mode indicator (4 Ω/70V/100V)
Switching power supply in SMPS technology (switch mode power supply) Fins to fasten to a 19" 2U rack
Power Consumption: 2000VA
Power supply: 230V~ / 117V~ 50-60 Hz
Dimensions (WxHxD): 434x88.5x425mm – 19" 2U rack
Weight: 10.35 kg



PRE-AMPLIFIERS, MIXER AND PROCESSORS

PRE-AMPLIFIERS, MIXER AND PROCESSORS



PA AMIX54Z

Stereo Matrix/Mixer with 5 line/micro inputs with addressable multimedia module (Tuner FM - MP3 reader)
Five mic/line inputs on balanced COMBO and RCA Stereo
Independent gain control over input channels 1~5 by means of a rear trimmer
Phantom +48V that can be deselected for each input
LED CLIP indicator for each channel input
INPUT1 priority function over the other inputs that can be disabled
Dip-switch (INPUT1~5) to assign the input to the outputs
Independent volume controls (INPUT1~5)
Four balanced stereo zones/outputs on Euroblock terminals
Four signal presence indicators on the outputs
Stereo/Mono selector on each output
Independent volume controls for the four zone outputs
MP3 multimedia player with FM radio freely addressable on the output zones
Ground Lift
Power supply selector 230/117V~ 50/60Hz
Dimensions (WxHxD): 483x44.4x200mm - 19" 1U rack
Weight: 3.4 kg



PA AMIX63

Analogue mixer to mix microphone/line signals, 6 Micro XLR inputs, 3 RCA Line inputs
High-quality design and manufacturing accuracy
Six balanced COMBO mic/line inputs
Three unbalanced RCA stereo line inputs
Line/mic with phantom/mic input type selectors
LED input signal indicators for each channel
Adjustable MIC 1 priority function on the other inputs
Independent gain controls for channels 1~9
Two balanced XLR outputs (Left and Right)
Balanced mono output
RCA type stereo REC output (Left and Right)
LED output signal level indicators (Left and Right)
MASTER volume control
Tone controls
Emergency power terminals (24 V DC)
Power supply selector 230V~ 50/60Hz (AMIX63V117 117V~ 50/60Hz)
Dimensions (WxHxD): 483x44x195mm 19" 1U rack
Weight: 2.9 kg

PA FSHIFTER

Antilarsen processor
Balanced line input on XLR connector
Unbalanced line input on RCA connector
Balanced line output on XLR connector
Unbalanced line output on RCA connector
LED indication of operating mode
Switch power supply 117/230V~ 50/60Hz
Dimensions (WxHxD): 483x44x195mm - 19" 1U Rack
Weight: 32 kg



AUDIO SOURCE AND RECEIVERS

AUDIO SOURCES AND RECEIVERS



PA SOURCE

CD-USB/MP3 Reader with AM/FM tuner
USB port for MP3 file reading on pen drive
TUNER OUT
Outputs levels: CD/MP3 OUT: 1.2V
TUNER OUT: 1.2V
Controls: CD/MP3 READER CONTROLS
RADIO TUNER CONTROLS
Frequency response:
 CD: 20Hz - 20kHz (-3dB)
 RADIO: 100Hz - 12kHz (-3dB)
Signal/Noise ratio: CD: > 75dB
RADIO: > 65dB
Power supply: 230V~ 50/60Hz (SOURCEUS 117V~ 50/60Hz)
Input/Output connectors: CD/MP3 OUT: 1x RCA L/R
TUNER OUT: 1x RCA L/R
Dimensions (WxHxD): 482x44x250mm - 19" 1U rack
Weight: 3.5 kg

PA ATMP160XL

Combo receiver 160W - 70/100V- 4Ω
USB/SD MMC, BLUETOOTH integrated multimedia module and
Digital AM/FM tuner
Speaker short-circuit and overload protection circuit
LED power indicator
LED level indicator
Master volume control
Separate level controls for inputs 1÷5
Low and high tone adjustment
Lit knobs
4 MIC/MIC Phantom 24/LINE balanced inputs on Euroblock terminal
3 AUX switchable inputs from front selector
1÷4 Inputs with VOX priority function / Contact on other inputs
(selectable by dip-switch)
MAIN - IN/OUT function
3 outputs, one of which at constant 4Ω impedance and two at
constant voltage (70/100V)
Independent CHIME function for each input (routing)
REC OUT output on RCA
Balanced line level output on Euroblock terminal
230/117V~ 50/60Hz autoswitch power supply
Fins to fasten to a provided 19" 2U rack
Dimensions (WxHxD): 439x88x300mm
483x88 x300mm - 19" 2U rack



SOUND SPEAKERS

SOUND SPEAKERS



PA PR10PL

ABS sound projector
Loudspeaker: Full range
Power: 10/5/2.5W @ 100V
Frequency response: 160Hz-16kHz (-10dB)
SPL (1W/m): 91dB
SPL MAX (Pmax @ 1m): 101dB
Coverage angle 1kHz/4kHz (-6dB): 130°/85°
Colour: White (RAL 9010)
Dimensions: Ø138-H190mm
Weight: 1.9 kg
U-type bracket included
Protection rating: IP55



PA PR10PLB

ABS sound projector
Loudspeaker: Full range
Power: 10/5/2.5W @ 100V
Frequency response: 160Hz-16kHz (-10dB)
SPL (1W/m): 91dB
SPL MAX (Pmax @ 1m): 101dB
Coverage angle 1kHz/4kHz (-6dB): 130°/85°
Colour: Black
Dimensions: Ø138-H190mm
Weight: 1.9 kg
U-type bracket included
Protection rating: IP55



PA PR30PL

ABS waterproof sound projector
Loudspeaker: 5" Full range
Power: 30/15/7.5/3.5/1.5W @ 100V 8Ω
Frequency response: 125Hz-15kHz
SPL (1W/m): 101dB
SPL MAX (Pmax @ 1m): 110 dB
Coverage angle 1kHz/4kHz (-6dB): 130°/90°
Colour: White
Dimensions: Ø178-H200mm
Weight: 2.1 kg
U-type bracket included
Protection rating: IP56



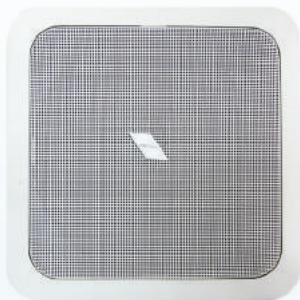
PA HSPL30

Music-type ABS waterproof wide-band Hi-Fi horn
Loudspeaker: Full range
Power: 30/15W @ 100V
Frequency response: 120Hz-15kHz (-10dB)
SPL (1W/m): 98dB
SPL MAX (Pmax @ 1m): 113dB
Coverage angle 1kHz/4kHz (-6dB):
H: 110°/80°
V: 90°/80°
Dimensions (WxHxD): 366x172x272mm
U type bracket included
Protection rating: IP56



PA WS04

ABS wall speaker
Loudspeaker: 6' Full range
Power: 10/5W @ 100V
Frequency response: 110Hz-13kHz (-10dB)
SPL (1W/m): 91dB
SPL MAX (Pmax @ 1m): 101dB
Coverage angle 1kHz/4kHz (-6dB): 110°/85°
Colour: White (RAL 9010)
Dimensions (WxHxD): 240x345x101mm
Weight: 1.6 kg
Fixing system by screw



XE65CTX

2-way square wall/ceiling mount speaker in ABS
Loudspeaker: W: 6.5" - T: 1"
Power: 40/20/5/2W @ 100V/70V
45W @ 8Ω
Frequency response: 70Hz-20kHz (-10dB)
SPL (1W/m): 87dB
SPL MAX (Pmax @ 1m): 103dB
Coverage angle 1kHz/4kHz (-6dB): 145°/80°
Colour: White (RAL 9010)
Dimensions (WxHxD): 200x200x77mm
Weight: 1.7 kg
Assembly: Ceiling/wall recessed
Mounting hole (WxH): 176x176mm
Available in pairs (single price)



PA COVER6X

Metal box for XE65CTX

SOUND SPEAKERS



XE51CT

ABS ceiling recessed speaker
Loudspeaker: 5" Full range
Power: 10/5/2.5W @ 100V
Frequency response: 100Hz-20kHz (-10dB)
SPL (1W/m): 90dB
SPL MAX (Pmax @ 1m): 100 dB
Coverage angle 1kHz/4kHz (-6dB): 130°/100°
Colour: White (RAL 9010)
Dimensions (WxHxD): Ø191.5-H78mm
Weight: 1 kg
Assembly: ceiling recessed
Mounting hole: Ø165mm
Available in pairs (single price)



PA COVERCS

Metal box for XE51CT



PA CSE06T

Metal ceiling speaker
Loudspeaker: 5" Full range
Power: 6/3W @ 100V
Frequency response: 110Hz-15kHz (-10dB)
SPL (1W/m): 90dB
SPL MAX (Pmax @ 1m): 98dB
Coverage angle 1kHz/4kHz (-6dB): 150°/95°
Colour: White (RAL 9010)
Dimensions: Ø204-H85mm
Weight: 0.7 kg
Assembly: ceiling recessed
Mounting hole: Ø175mm



XE65CT

ABS 2-way hi-fi ceiling recessed speaker
Loudspeaker: W: 6.5" - T: 1"
Power: 20/10/5/2.5W @ 100V
Frequency response: 70Hz-20kHz (-10dB)
SPL (1W/m): 87dB
SPL MAX (Pmax @ 1m): 100 dB
Coverage angle 1kHz/4kHz (-6dB): 130°/80°
Colour: White (RAL 9010)
Dimensions: Ø204-H85mm
Weight: 1.2 kg
Assembly: ceiling recessed
Mounting hole: Ø179mm
Available in pairs (single price)



PA CS30HSL

ABS two-way hi-fi ceiling recessed speaker and magnetic metal grid.
 Loudspeaker: W: 6" T: ¾"
 Power taps: 30/15/7.5W @ 100V
 Frequency response: 60Hz -20KHz
 SPL(1W/m): 89 dB
 SPL MAX (Pmax @ 1m): 105 dB
 Coverage Angle 1KHz/4KHz (-6dB):130°/120°
 Construction materials ABS/Iron
 Colour: White (RAL 9010)
 Dimensions: (Ø x D) 232 x 90 mm
 Weight:1.85Kg
 Recess Hole: 210mm



PA CS6TALEN

Steel recessed speaker with anti flame steel cover, ceramic terminal board and thermal fuse
 Loudspeaker: 6.5" Full range
 Power: 12/6/3W @ 100V
 Frequency response: 100Hz-20kHz (-10dB)
 SPL (1W/m): 90dB
 SPL MAX (Pmax @ 1m): 100 dB
 Coverage angle 1kHz/4kHz (-6dB): 150°/95°
 Colour: White (RAL 9010)
 Dimensions: Ø220-H150mm
 Weight: 1.6 kg
 Assembly: Ceiling recessed
 Mounting hole: Ø205mm



PA CSB10

ABS Ceiling speaker
 Loudspeaker: 5" Full range
 Power: 10/5/2.5W @ 100V-70V
 Frequency response: 110Hz - 15kHz (-10 dB)
 SPL (1W/m): 92dB
 SPL MAX (Pmax @ 1m): 102dB
 Coverage angle 1kHz/4kHz (-6dB): 160°/95°
 Colour: White (RAL 9010)
 Dimensions (WxHxD): Ø184-H162.5mm
 Weight: 1.7 kg
 4.5 metre suspension cable
 Protection rating: IP44

SOUND SPEAKERS



PA CO30S5

Aluminium high directivity column speaker
Loudspeaker: 5x3" 1/4
Power: 7.5/15/30 W - 100V
Frequency response: 200Hz-19kHz (-10dB)
SPL (1W/m): 93dB
SPL MAX (Pmax @ 1m): 108dB
Coverage angle 1kHz/4kHz (-6dB): V:70°/20° H:160°/120°
Colour: White
Dimensions (WxHxD): 91x544x88mm
Weight: 3.5 kg



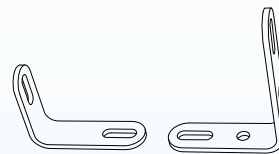
PA CO60S10

Aluminium high directivity column speaker
Loudspeaker: 10x3" 1/4
Power: 15/30/60 W @ 100V
Frequency response: 180Hz-18kHz (-10dB)
SPL (1W/m): 93dB
SPL MAX (Pmax @ 1m): 111dB
Coverage angle 1kHz/4kHz (-6dB): V:40°/20° H:160°/120°
Colour: White
Dimensions (WxHxD): 91x94 x88mm
Weight: 6.2 kg



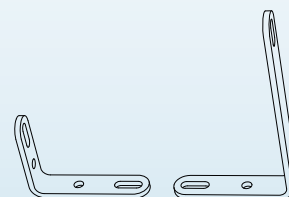
PA CO120S15

Aluminium high directivity column speaker
Loudspeaker: 10x3" 1/4
Power: 60/120W
@ 100V Frequency response 170Hz-17kHz (-10dB)
SPL (1W/m): 94dB
SPL MAX (Pmax @ 1m): 115dB
Coverage angle 1kHz/4kHz (-6dB): V:30°/20° H:160°/120°
Colour: White
Dimensions (WxHxD): 91x1339x88mm
Weight: 8.9 kg



PA SC1

Wall bracket for CO series column speakers



PA SC2

Wall bracket for CO series column speakers



PA CO4006

Aluminium high directivity column speaker
Loudspeaker: W: 6x2" - T: 1"
Power: 40/20/10W @ 100V
Frequency response: 180Hz-18kHz (-10dB)
SPL (1W/m): 91dB
SPL MAX (Pmax @ 1m): 107 dB
Coverage angle 1kHz/4kHz (-6dB): V:40°/30° H:170°/140°
Colour: White
Swivel bracket
Dimensions (WxHxD): 67x505x65mm
Weight: 2.2 kg



PA CO4012

Aluminium high directivity column speaker
Loudspeaker: W:12x2" - T: 1"
Power: 40/20/10W @ 100V
Frequency response: 180Hz-18kHz (-10dB)
SPL (1W/m): 93dB
SPL MAX (Pmax @ 1m): 109 dB
Coverage angle 1kHz/4kHz (-6dB): V:30°/25° H:170°/150°
Colour: White
Swivel bracket
Dimensions (WxHxD): 67x828x65mm
Weight: 3.5 kg



SOUND SPEAKERS



PA HS15AL

Aluminium horn speaker
Power: 15/10/5/3/1W @ 100V
Frequency response: 280Hz-12.5kHz (-10dB)
SPL (1W/m): 108dB
SPL MAX (Pmax @ 1m): 120dB
Coverage angle 1kHz/4kHz (-6dB): 90°/60°
Colour: Grey
Dimensions: Ø212.5x229.5mm
Weight: 1.4 kg
U-type bracket included
Protection rating: IP55



PA HS30AL

Aluminium horn speaker
Power: 30/15/10/5/3/1W @ 100V
Frequency response: 250Hz-16kHz (-10dB)
SPL (1W/m): 109dB
SPL MAX (Pmax @ 1m): 124dB
Coverage angle 1kHz/4kHz (-6dB): 90°/60°
Colour: Grey
Dimensions: Ø259x261mm
Weight: 1.8 kg
U-type bracket included
Protection rating: IP55



PA H16R

Long range aluminium round horn, without driver Anti UV treatment
To be used combined with HD60T driver
Coverage angle 1kHz/4kHz (-6dB): 80°/65°
Aluminium body
Colour: Grey
Dimensions: Ø407x325mm
Weight: 1.5 kg
U-type bracket included
Protection rating: IP66



PA HD60T

Waterproof driver unit for "H" series horns
Power: 60/40/20W @ 100V
Frequency response: 200Hz-6kHz (-10dB)
SPL (1W/m): 115dB
SPL MAX (Pmax @ 1m): 133dB
Colour: Grey
Weight: 1.4 kg
Protection rating: IP55



PA HS30

ABS horn speaker
Power: 30/15/10/5/3/1W @ 100V
Frequency response: 250Hz-16kHz (-10dB)
SPL (1W/m): 109dB
SPL MAX (Pmax @ 1m): 124dB
Coverage angle 1kHz/4kHz (-6dB): 95°/65°
Colour: White (RAL 9010)
Dimensions (WxHxD): 287x208x257.5mm
Weight: 1.7 kg
U-type bracket included
Protection rating: IP55



PA STONE

Stone-shape speaker
Loudspeaker: Two-way coaxial W:6.5" - T:1.5"
Power: 15/7.5W @ 100V - 7.5/3.8W @ 70V
Frequency response: 120Hz -15kHz (-10dB)
SPL (1W/m): 95dB
SPL MAX (Pmax @ 1m): 108dB
Coverage angle 1kHz/4kHz (-6dB): 250°/250°
ABS body
Colour: Light grey stone
Dimensions (WxHxD): 259x265x349mm
Weight: 4.3 kg
Protection rating: IP 55



PA FGS20

Hi-Fi garden speaker
Loudspeaker: Two-way coaxial
Power: 30/15/7.5W @ 100V
Frequency response: 80Hz-12kHz (-10dB)
SPL (1W/m): 97dB
SPL MAX (Pmax @ 1m): 110dB
Coverage angle 1kHz/4kHz (-6dB): 360°/360°
ABS body
Colour: Green
Dimensions (WxHxD): 280x400x280mm
Weight: 1.8 kg
Protection rating: IP55

SOUND SPEAKERS



XE35TB

Two-way monitor speaker

Loudspeaker: W: 3.5" T: 1"

Power: 15/7.5/4/2/1W @ 100/70V
30W @ 8Ω

Frequency response: 70Hz-20kHz (-10dB)

SPL (1W/m): 85 dB

SPL MAX (Pmax @ 1m): 97 dB

Coverage angle 1kHz/4kHz (-6dB): 150°/100°

ABS body

Colour: Black

Dimensions (WxHxD): 130x198x130mm

Weight: 1.8 kg

U-type bracket included

Available in pairs (single price)



XE55TB

Two-way monitor speaker

Loudspeaker: W: 5" - T: 1"

Power: 30/10/5/2/1W @ 100/70V
60W @ 8Ω

Frequency response: 70Hz-20kHz (-10dB)

SPL (1W/m): 87dB

SPL MAX (Pmax @ 1m): 101dB

Coverage angle 1kHz/4kHz (-6dB): 140°/90°

ABS body

Colour: Black

Dimensions (WxHxD): 181x240x172mm

Weight: 3 kg

U-type bracket included

Available in pairs (single price)



XE65TB

Two-way monitor speaker

Loudspeaker: W: 6.5" - T: 1"

Power: 40/20/10/5/2W @ 100/70V
60W @ 8Ω

Frequency response: 70Hz-20kHz (-10dB)

SPL (1W/m): 87dB

SPL MAX (Pmax @ 1m): 103dB

Coverage angle 1kHz/4kHz (-6dB): 140°/90°

ABS body

Colour: Black

Dimensions (WxHxD): 217x288x204mm

Weight: 4.2 kg

U-type bracket included

Available in pairs (single price)



PA SNBK

Adjustable wall swivel connection for Monitor line.

Colour Black. Standard package: 2pcs



XE35TW

Two-way monitor speaker
Loudspeaker: W: 3.5" - T: 1"
Power: 15/7.5/4/2/1W @ 100/70V
30W @ 8Ω

Frequency response: 70Hz-20kHz (-10dB)
SPL (1W/m): 85dB
SPL MAX (Pmax @ 1m): 97 dB
Coverage angle 1kHz/4kHz (-6dB): 150°/100°
ABS body
Colour: White
Dimensions (WxHxD): 130x198x130mm
Weight: 1.8 kg
U-type bracket included
Available in pairs (single price)



XE55TW

Two-way monitor speaker
Loudspeaker: W: 5" - T: 1"
Power: 30/10/5/2/1W @ 100/70V
60W @ 8Ω

Frequency response: 70Hz-20kHz (-10dB)
SPL (1W/m): 87dB
SPL MAX (Pmax @ 1m): 101dB
Coverage angle 1kHz/4kHz (-6dB): 140°/90°
ABS body
Colour: White
Dimensions (WxHxD): 181x240x172mm
Weight: 3 kg
U-type bracket included
Available in pairs (single price)



XE65TW

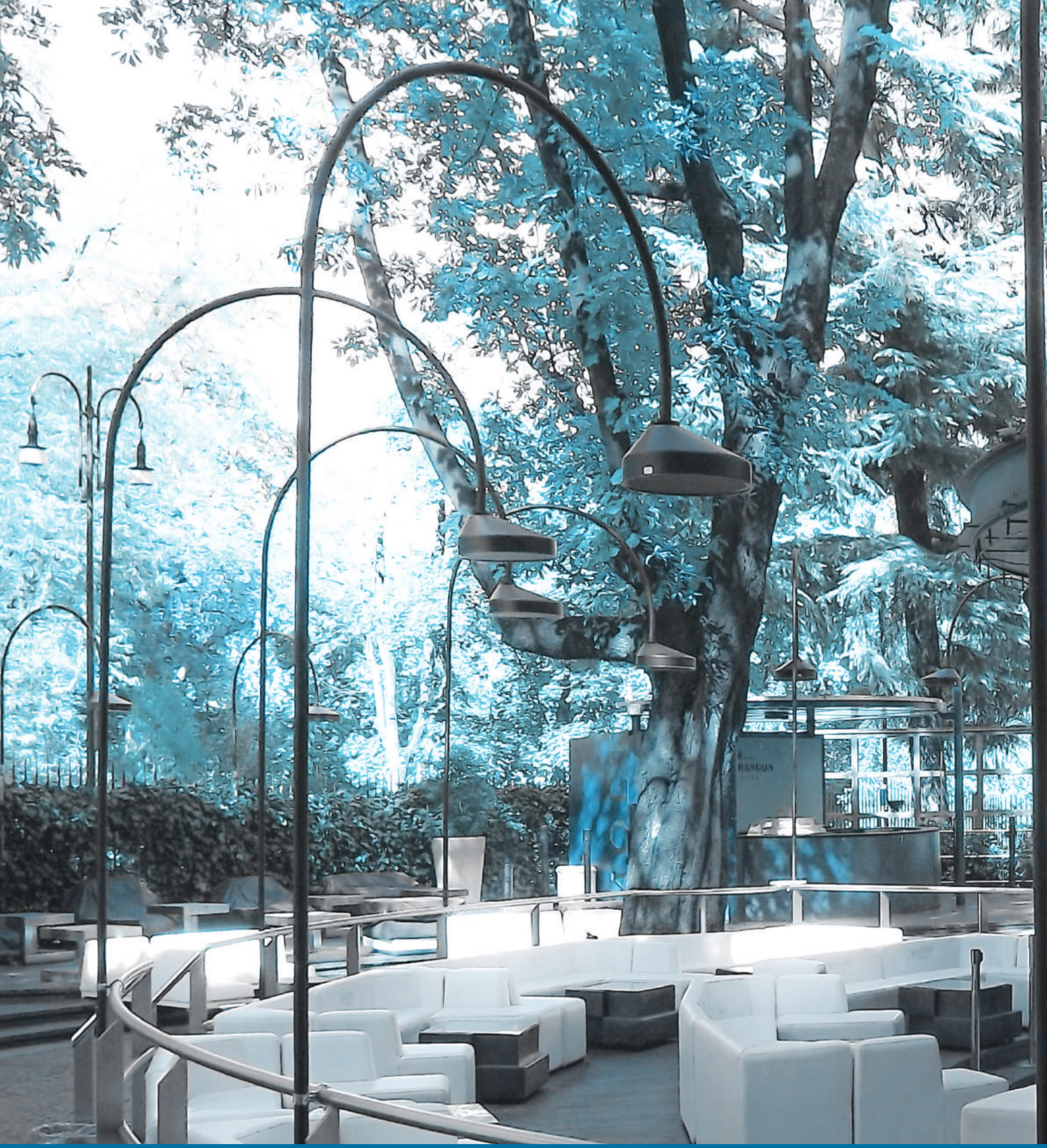
Two-way monitor speaker
Loudspeaker: W: 6.5" - T: 1"
Power: 40/20/10/5/2W @ 100/70V
60W @ 8Ω

Frequency response: 70Hz-20kHz (-10dB)
SPL (1W/m): 87dB
SPL MAX (Pmax @ 1m): 103dB
Coverage angle 1kHz/4kHz (-6dB): 140°/90°
ABS body
Colour: White
Dimensions (WxHxD): 217x288x204mm
Weight: 4.2 kg
U-type bracket included
Available in pairs (single price)



PA SNWH

Adjustable wall swivel connection for Monitor line.
Colour White. Standard package: 2pcs





LNE SYSTEMS

LNE SYSTEMS



DS112P 

€ 1.285,00

LNE SYSTEM Low Noise Emission

Two-way high directivity System MTM circular configuration

Input power rating (continuous): 300W (8Ω)

Input power rating (peak): 600W (8Ω)

Impedance: 8Ω

Frequency response: 110Hz-16kHz (-3dB), 80Hz-18kHz (-10dB)

SPL MAX (Pmax @ 1m): 124dB

Low frequencies: 12 x 3.5"

High frequencies: 1 x 1" compression driver

Coverage angle: <math><78^\circ</math>

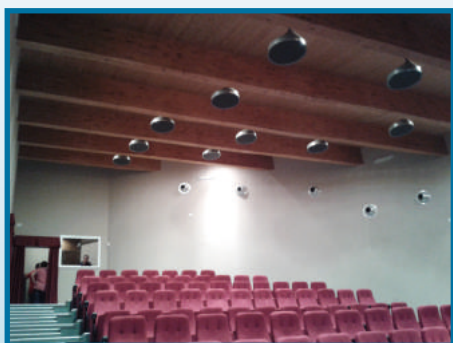
Colour: Standard RAL 9007

Colour Custom: (RAL CODE) Minimum 20 pcs

Weight: 9 kg

Dimensions: Ø510-H208mm

Protection rating: IP55





MICROPHONES

MICROPHONES



PA BM101

General announcement active call station with automatic compressor, dynamic microphone, programmable talk button (PTT or ON/OFF), level output adjustment trimmer, chime level trimmer, selectable 2 or 3 tone chime and smart priority management. Power supply from RJ45 cable or 24Vdc local adaptor.



PA BM102

General announcement call station with dynamic microphone, Push to talk button and priority output contact (Normally Open).



PA BMG2

Table microphone base, with gooseneck microphone with light ring
Sensitivity: $-40\text{dB} \pm 2\text{dB} / 100\Omega \pm 30\%$
Frequency response: 40Hz-20kHz (-3dB)
Power supply: Phantom 48Vdc Batteries 3V (2x AA)
Gooseneck length: 445 mm
Switch: ON-OFF
Connector: XLR
Dimensions (WxHxD): 115x140x30mm
Weight: 0.7 kg



PA MIC62W

Boundary condenser microphone
table or wall low profile
Condenser capsule
One-way
Frequency response: 60Hz-16kHz
Sensitivity: $-36 \pm 3\text{dB} @ 1\text{kHz}$
Impedance: $200\Omega \pm 30\% - @ 1\text{kHz}$
Voltage: 9V~52Vdc
Cable length: 4.56m
Weight: 0.250Kg (without cable)
Dimensions (WxHxD): 75x20x100mm
Colour: White



PA MG400

One-way electret gooseneck microphone
Sensitivity: 7mV/Pa
Impedance: 200Ω balanced
Frequency response: 150Hz-18kHz (-3dB)
Phantom power supply: 12-52Vdc
Gooseneck length: 400mm
Connector: XLR
Dimensions: H400mm



PA MG500

One-way, electret gooseneck microphone
Sensitivity: 7mV/Pa
Impedance: 200Ω balanced
Frequency response: 150Hz-18kHz (-3dB)
Phantom power supply: 12-52Vdc
Gooseneck length: 500mm
Connector: XLR
Dimensions: H500mm



PA BMT

Microphone base for gooseneck MG400/500,
connectors XLR-3P. BISTABLE ON/OFF KEY



PA BMS4

Metal base, table mounting by screws, XLR connector



PA UHF SPLITAL

Active UHF antenna active distributor
Working frequency: 600-740MHz
Power Supply: 110-230V~ 50/60Hz - 12Vdc adapter
Dimensions (WxHxD): 482x44x200mm
Weight: 1.7 kg





RACK AND ACCESSORIES

RACK AND ACCESSORIES



STUDIORKXL08

19" Standard 8 Unit professional Rack container, matt black painted steel, 4 castors
Dimensions (WxHxD): 560x467x580mm
Weight: 17,9 Kg



PXCOVER08N

Plexiglass door for 8-unit STUDIORKXL



STUDIORKXL12

19" Standard 12 Unit professional Rack container, matt black painted steel, 4 castors
Dimensions (WxHxD): 560x646x580mm
Peso: 21,7 Kg



PXCOVER12N

Plexiglass door for 12-unit STUDIORKXL



STUDIORKXL36

19" Standard 36 Unit professional Rack container, matt black painted steel, 4 castors
Dimensions (WxHxD): 560x1718x580mm Peso: 39 Kg



PXCOVER36N

Plexiglass door for 36-unit STUDIORKXL



PA STF1

Bracket for heavy apparatus racks using purposes (AUP120/240/480/AUP4125/4250s etc.). Suitable for STUDIORKXL series rack



FSR2260

19" Standard 22 Unit professional Rack container, matt black painted steel, with openable door, sides and back, 4 castors. Top with fan unit with thermostat.
Dimensions (WxHxD): 600x1093x600mm



FSR2760

19" Standard 27 Unit professional Rack container, matt black painted steel, with openable door, sides and back, 4 castors. Top with fan unit with thermostat.
Dimensions (WxHxD): 600x1313x600mm



FSR3260

19" Standard 32 Unit professional Rack container, matt black painted steel, with openable door, sides and back, 4 castors. Top with fan unit with thermostat.
Dimensions (WxHxD): 600x1533x600mm



FSR3760

19" Standard 37 Unit professional Rack container, matt black painted steel, with openable door, sides and back, 4 castors. Top with fan unit with thermostat.
Dimensions (WxHxD): 600x1753x600mm



FSR4260

19" Standard 42 Unit professional Rack container, matt black painted steel, with openable door, sides and back, 4 castors. Top with fan unit with thermostat.
Dimensions (WxHxD): 600x2000x600mm



FRSHELF02

19' rack metal sliding shelf to be used on the new FSR rack cabinets only Matt black finish

RACK AND ACCESSORIES



PA ACC

50A Circuit breaker main switch 19" Rack panel with 6 VDE sockets.
1 Modular unit height.



SDC308R

1U horizontal feeding bar made of aluminium profile and flame retardant thermoplastic parts. Features n.8 x 16A 230V 2P +G. Schuko outlet with red lighting switch; 2.5 m length 3 x 1.5 mm² power cable and 16A 2P + G Schuko plug (230V, CE 73/23). Max capacity: 3500W. Equipped with universal metal fins, for mounting on 19" rack cabinets.



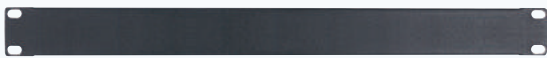
RK3L

3-unit 19" rack blank panel



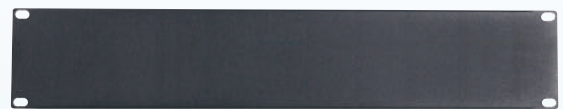
RK4L

4-unit 19" rack blank panel



RK1L

1-unit 19" rack blank panel



RK2L

2-unit 19" rack blank panel



RK1NV

19" 1 rack unit ventilation panel



RK2NV

19" 2 rack unit ventilation panel



RK4N

19" 1U Rack Panel
4 Plug mounting holes for XLR/SPEAKON panel



RK6N

19" 1U Rack Panel
6 Plug mounting holes for XLR/RCA/SPEAKON panel



RK8N

19" 1U Rack Panel
8 Plug mounting holes for XLR/RCA/SPEAKON panel



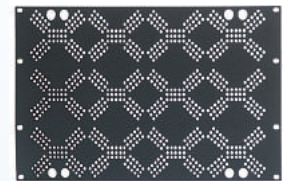
RK12N

19" 1U Rack Panel
12 Plug mounting holes for XLR/RCA/SPEAKON panel



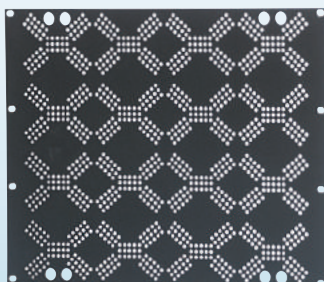
RK2VP

2-unit back protection Rack panel



RK6VP

6-unit back protection Rack panel



RK8VP

8-unit back protection Rack panel

RACK AND ACCESSORIES



ADRK2AZ

19" 2U rack assembly shelf/adaptor



ADRK3AZ

19" 3U rack assembly shelf/adaptor



ADRK3CR

Lockable 19" 3U rack metal drawer



ADRK4CR

Lockable 19" 4U rack metal drawer



VOLUME CONTROLS

VOLUME CONTROLS



PA TRV12A

Recessed volume attenuator for 100V lines. 12W transformer on European square box. With 24Vdc bypass relay.



PA TRV50A

Recessed volume attenuator for 100V lines. 50W transformer on European square box. With 24Vdc bypass relay.



PA TRV6B

Recessed volume attenuator for 100V lines. 6W transformer on 503 box. With 24Vdc bypass relay.



PA TRV30B

Recessed volume attenuator for 100V lines. 30W transformer on 503 box. With 24Vdc bypass relay.



PA TRV60B

Recessed volume attenuator for 100V lines. 60W transformer on 503 box. With 24Vdc bypass relay.



PA TRV120B

Recessed volume attenuator for 100V lines. 120W transformer on 503 box. With 24Vdc bypass relay.



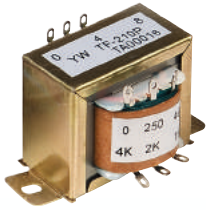
PA TR50ST

Stereo volume attenuator for 4/8/16 Ω speakers, 12 positions, 2x50W maximum power handling, dedicated box for flush mounting.



LINE TRANSFORMERS

LINE TRANSFORMERS



PA TR40

Audio transformer: 100V-24/12/6/3/1.5W
Primary impedance: 416-816-1660-3300-6600Ω
Secondary impedance: 8-4Ω



PA TR100

Audio transformer: 100V-40/20/10/5/2.5W
Primary impedance: 250-490-1000-2000-4000Ω
Secondary impedance: 8-4Ω



PA MATCHBOX

Universal audio adapter and decoupler with isolation transformer.
LINE/LINE - 100V/LINE

ALPHABETICAL INDEX

CODE	PAGE
ADRK2AZ	60
ADRK3AZ	60
ADRK3CR	60
ADRK4CR	60
AE300	6
AE604	6
DS112P	50
FSR2260	57
FSR2760	57
FSR3260	57
FSR3760	57
FSR4260	57
FSRSHELF02	57
INCOM2	18
PA 48VDCER1	9
PA A31TB	12
PA A31TW	12
PA A51TB	12
PA A51TW	12
PA AC60T	15
PA AC61T	15
PA ACC	58
PA AELAB	8
PA AH50T	14
PA AIW50FRAME	14
PA AIW50T	14
PA AMIX54Z	34
PA AMIX63	34
PA AMP03VR	30
PA AMP35E	30
PA AMP60E	30
PA AMP160XL	30
PA AMP240V4	31
PA AP50T	13

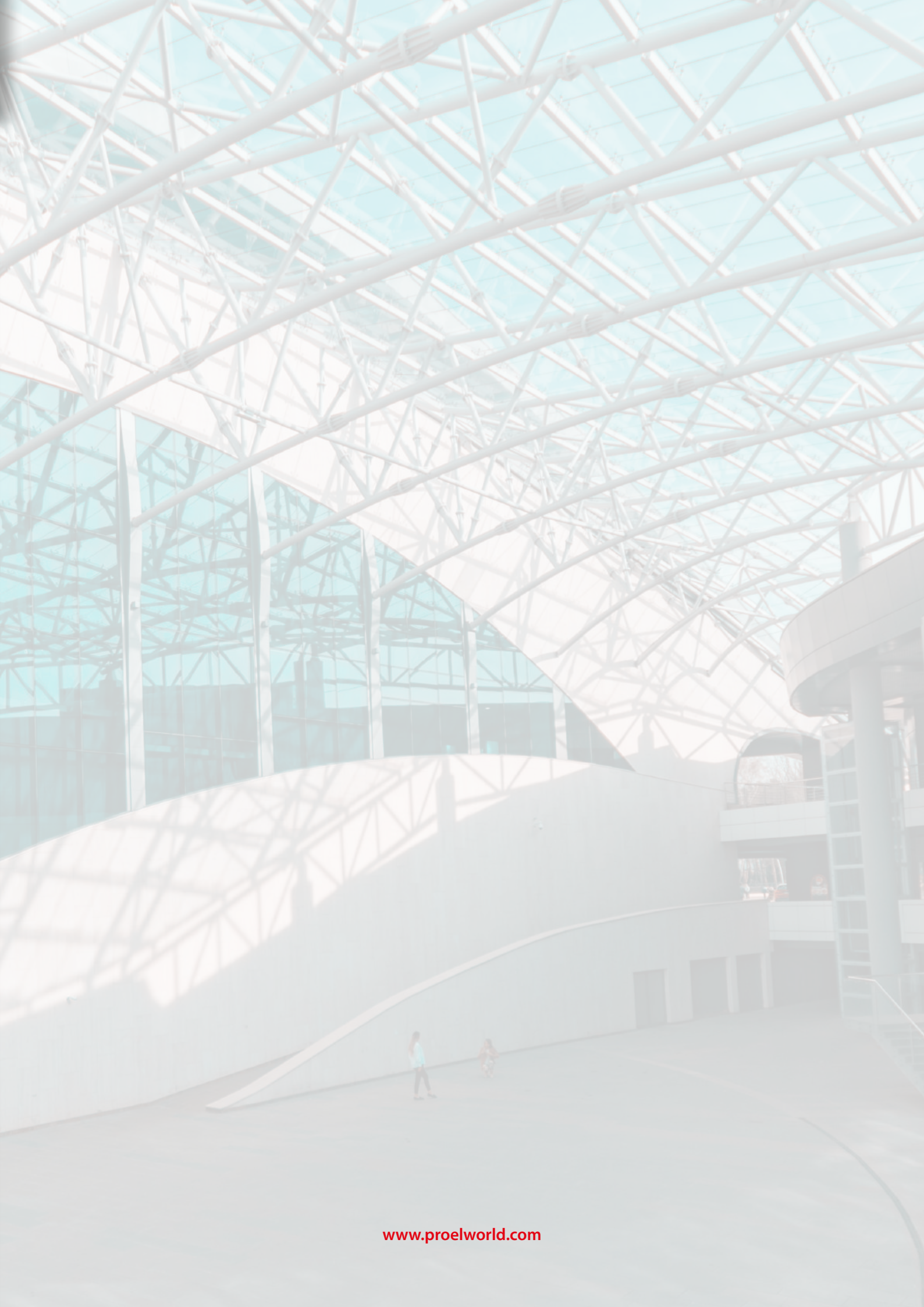
CODE	PAGE
PA AP52T	13
PA ATMP160XL	36
PA ATMP240ZXL	31
PA AUP160D	32
PA AUP240R	32
PA AUP4125S	32
PA AUP4250S	32
PA BM01	22
PA BM04	22
PA BM8X8	21
PA BM101	52
PA BM102	52
PA BMCD	24
PA BMDD	24
PA BMG2	52
PA BMS4	53
PA BMT	53
PA C030S5	42
PA C060S10	42
PA C0120S15	42
PA C04006	43
PA C04012	43
PA CONFD	24
PA COVER6X	39
PA COVERCS	40
PA CS-6HT60BS	16
PA CS6TALEN	41
PA CS30HSL	41
PA CSB10	41
PA CSE06T	40
PA CVMF3	25
PA CVMF6	25
PA CVMF13	25
PA CVMM3	25

CODE	PAGE
PA DBE01	7
PA DBE06	7
PA DBE108	7
PA DBE108E	7
PA DBEVF	7
PA DM250/550/750	9
PA DWSKIT	24
PA EV MCL1Z	8
PA EV MCL2Z	8
PA EV PROM5Z	8
PA EV PROS8Z	8
PA EXBM8X8	21
PA EXCONFD	25
PA FGS20	45
PA FSHIFTER	34
PA H16R	44
PA HD60T	44
PA HS15AL	44
PA HS30	45
PA HS30AL	44
PA HSPL30	38
PA LOC02	20
PA MATCHBOX	64
PA MATRIX88	20
PA MDAC8	9
PA MDACTV	9
PA MEG30	28
PA MG400	53
PA MG500	53
PA MIC62W	52
PA PHS-81T30BS	16
PA PR10PL	38
PA PR10PLB	38
PA PR30PL	38

ALPHABETICAL INDEX

CODE	PAGE
PA R88	20
PA R88L	20
PA RBOX1	21
PA RBOX2	21
PA RM4	31
PA SC1	42
PA SC2	42
PA SNBK	46
PA SNWH	47
PA SOURCE	36
PA STF1	56
PA STONE	45
PA TR40	64
PA TR50ST	62
PA TR100	64
PA TRV6B	62
PA TRV12A	62
PA TRV30B	62
PA TRV50A	62
PA TRV60B	62
PA TRV120B	62
PA UHFSPLITAL	53
PA WS04	39
PA ZONE8	22
PXCOVER08N	56
PXCOVER12N	56
PXCOVER36N	56
RK1L	58
RK1NV	58
RK2L	58
RK2NV	58
RK2VP	59
RK3L	58
RK4L	58

CODE	PAGE
RK4N	59
RK6N	59
RK6VP	59
RK8N	59
RK8VP	59
RK12N	59
SDC308R	58
STUDIORKXL08	56
STUDIORKXL12	56
STUDIORKXL36	56
XE35TB	46
XE35TW	47
XE51CT	40
XE55TB	46
XE55TW	47
XE65CT	40
XE65CTX	39
XE65TB	46
XE65TW	47



UK
Proel International Ltd.
London

KOREA
Proel Korea Co. Ltd.
Gyeonggi-Do

USA
Proel North America Inc.
Los Angeles

TUNISIE
Proel Tunisia Sarl
Tunisi

PROEL SPA
(Worldwide Headquarters)
Via alla Ruenia, 37/43
64027 Sant'Omero (TE) - ITALY
Tel. +39 0861 81241
Fax +39 0861 887862
P.I. 00778590679
N.Reg.AEE IT 08020000002762

info@proel.com
www.worldproel.com

